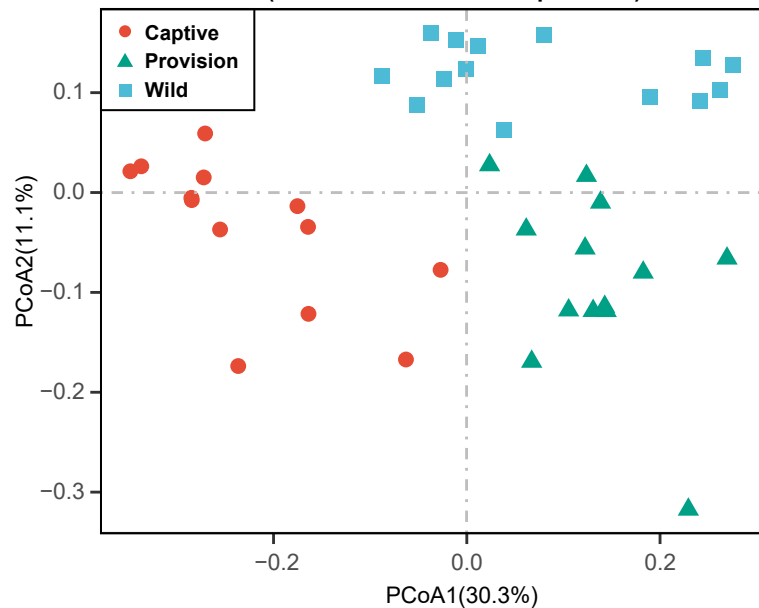
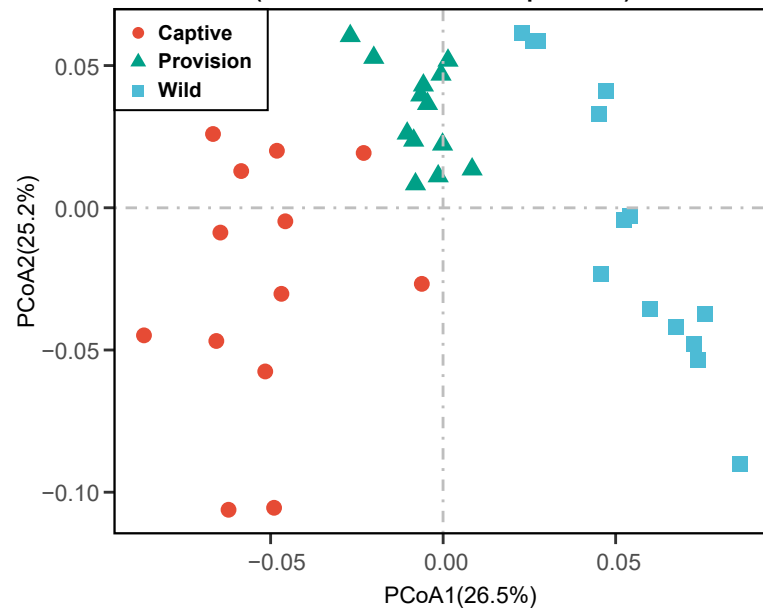


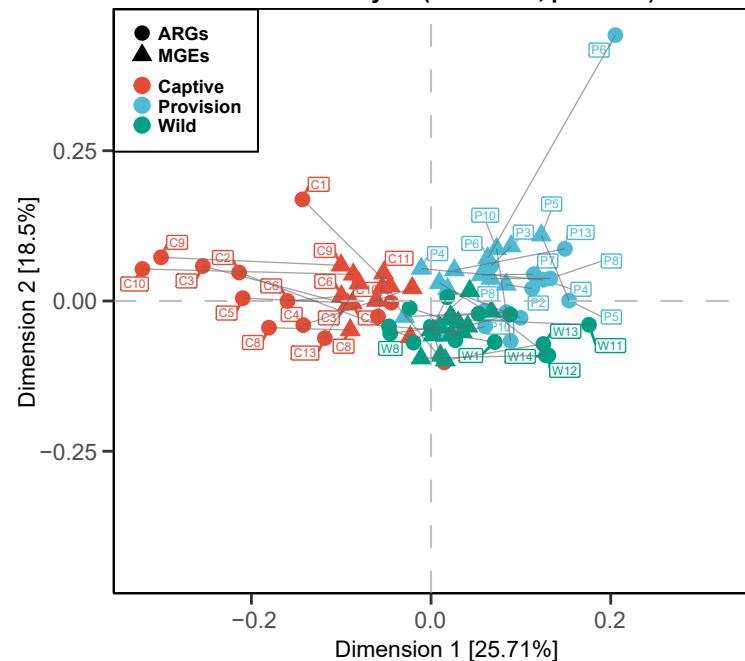
PCoA based on ARGs
(PERMANOVA $R^2 = 0.311$ $p = 0.001$)



PCoA based on VFs
(PERMANOVA $R^2 = 0.351$ $p = 0.001$)



Procrustes Analysis ($M^2 = 0.803$, $p = 0.001$)



Procrustes Analysis ($M^2 = 0.196$, $p = 0.001$)

