

Journeying towards best practice data management in biodiversity genomics

Running title

Biodiversity genomic data management

Authors

Natalie J. Forsdick^{*1,2}, Jana Wold^{*2,3}, Anton Angelo⁴, François Bissey⁵, Jamie Hart⁵, Mitchell Head^{6,7}, Libby Liggins^{2,8}, Dinindu Senanayake⁹, Tammy E. Steeves^{2,3}

Affiliations

1 Manaaki Whenua – Landcare Research, New Zealand

2 Genomics Aotearoa, New Zealand

3 School of Biological Sciences, University of Canterbury, New Zealand

4 Library, University of Canterbury, New Zealand

5 Digital Services, University of Canterbury, New Zealand

6 Ngaati Mahuta; Ngaati Naho

7 Te Kotahi Research Institute, University of Waikato, New Zealand

8 School of Natural Sciences, Massey University, New Zealand

9 New Zealand eScience Infrastructure, New Zealand

* Co-first authors.

Corresponding author

NJF: forsdickn@landcareresearch.co.nz

Key words

CARE Principles for Indigenous Data Governance, data lifecycle, data management plans, digital sequence information, FAIR Guiding Principles, Indigenous data sovereignty

Abstract

Advances in sequencing technologies and declining costs are increasing the accessibility of large-scale biodiversity genomic datasets. To maximise the impact of these data, a careful, considered approach to data management is essential. However, challenges associated with the management of such datasets remain, exacerbated by uncertainty among the research community as to what constitutes best practices. As an interdisciplinary team with diverse data management experience, we recognise the growing need for guidance on comprehensive data management practices that minimise the risks of data loss, maximise efficiency for stand-alone projects, enhance opportunities for data reuse, facilitate Indigenous data sovereignty and uphold the FAIR and CARE Guiding Principles. Here, we describe four fictional personas reflecting user experiences with data management to identify data management challenges across the biodiversity genomics research ecosystem. We then use these personas to demonstrate realistic considerations, compromises, and actions for biodiversity genomic data management. We also launch the Biodiversity Genomics Data Management Hub (<https://genomicsaotearoa.github.io/data-management-resources/>), containing tips, tricks and resources to support biodiversity genomics researchers, especially those new to data management, in their journey towards best practice. The Hub also provides an opportunity for those biodiversity researchers whose expertise lies beyond genomics and are keen to advance their data management journey. We aim to support the biodiversity genomics community in embedding data management throughout the research lifecycle to maximise research impact and outcomes.

Introduction

The field of biodiversity genomics has undergone a fast-paced transformation over the last decade. Once largely inaccessible for non-model organisms, advancements in sequencing technology have substantially reduced costs associated with generating these data, leading to significant increases in the types and volumes of genomic data. Today, biodiversity genomics is a highly dynamic research field that integrates methods pioneered in human health (e.g., genome-wide association studies; Ozaki et al., 2002), agricultural breeding programmes (e.g., inbreeding coefficients; Wright 1922), and principles from molecular ecology and evolution (e.g., identifying the genomic consequences of small population size; Khan et al. 2021; Liu et al. 2021; Duntsch et al. 2021; Robledo-Ruiz et al. 2022). The proliferation of this Digital Sequence Information (DSI) and related data is being utilised to address an ever-expanding array of research questions with wide-ranging potential benefits across society and is a challenge for existing data management systems and research community practices.

To maximise the short- and long-term impacts of biodiversity genomic data, a considered and careful approach to data management is essential. Good data management practices (see Box 1) can benefit research teams and institutions, the research community, and wider society when biodiversity genomics data is used to address contemporary socio-environmental challenges. For research teams, the positive impacts of data management can be particularly pronounced for large and long-term projects where there is regular turnover of members and/or research roles are highly partitioned. Effective data management benefits research teams through ensuring efficient resource use (e.g., time, computational, and financial), risk mitigation (e.g., data loss, misinterpretation, and misuse), signalling credibility through data reproducibility (Baker, 2016; Eisner, 2018), and ease of data-sharing for enhanced collaboration (Lau et al.,

68 2017; Möller et al., 2017; Riginos et al., 2020). For research institutes and/or funding
69 organisations there may be legal obligations and long-term responsibilities (including social
70 licence requirements) for them as custodians to maintain the integrity of research data.
71 Furthermore, these information-rich biodiversity datasets have immense reuse value that can
72 only be realised if the data-generating researchers/institutions undertake careful data
73 management (Toczydlowski et al., 2021; Crandall et al., 2023). These secondary use cases may
74 diverge from the original purpose of data generation (Hoban et al., 2022; Leigh et al., 2021), and
75 can provide additional valuable insights (e.g., Crandall et al., 2019), enhancing the value of
76 these data to the research community and their potential impacts on society (e.g., Beninde et al.,
77 2022; Exposito-Alonso et al., 2022).

Box 1. Best practices vs. good practices

Based on our lived experiences working in this field, we (the authors) recognise there are different standards of data management. We acknowledge that achieving best practices (i.e., those described in the community guidelines and standards we strive towards implementing) is aspirational and may not always be practicable within the constraints of a research project (see section *Exploring biodiversity genomic data management challenges*). Instead, we encourage researchers to pursue ‘good practices’ as a stepping-stone on the journey towards best practices.

In our own data management journeys, we have experienced situations where there has been little to no data management throughout the research lifecycle. For example, when tracking and troubleshooting code as early PhD students, postdoctoral researchers attempting to standardise data storage and handling practices within research groups, and as research team leaders working to ensure continuity within and across projects.

Through our collective hindsight one lesson is clear—that *any* data management is better than no data management. A lot of trouble can be saved by reaching out for advice and guidance about specific needs (even when unsure of what these are) from eResearch support staff early and often. We strongly encourage any incremental improvements to data management by individuals, as capacity allows. This may include gradual updates to established protocols, rather than attempting a hasty overhaul that you, or your colleagues, may not have the capacity to execute well. It also includes that the culture of biodiversity genomics research is changing, and data management practices today may not mirror those of the past. Rather than lamenting past inadequacies, we encourage forward-focussed data management

solutions. This can include incrementally building data management habits into daily work and starting conversations among team members about their data and how they keep track of it. Together, these actions can go a long way toward shifting mindsets and propelling people along their data management journeys.

78

79 The incentives to implement data management practices are clear, and although there exists
80 Conceptual guidance on best practices within the broader scientific community (e.g., the FAIR
81 Guiding Principles for scientific data management and stewardship, Wilkinson et al., 2016; and
82 the CARE Principles for Indigenous data governance, Carroll et al., 2020, 2021; Jennings et al.
83 2023), implementation remains challenging (Box 2). Contributing factors include the sheer
84 volume of these information-rich datasets and the associated resource requirements (i.e., the
85 time and financial costs of data curation, maintenance, and processing; Batley & Edwards, 2009;
86 Chiang et al., 2011; Grigoriev et al., 2012; Schadt et al., 2010), as well as the inability of existing
87 data standards, infrastructures, and repositories to keep pace with the needs of this research
88 community (e.g., Crandall et al., 2023; Liggins et al., 2021). Best practices for biodiversity
89 genomic data management are an active area of discussion among the biodiversity genomics
90 community (Anderson & Hudson, 2020; Fadlilmola et al., 2021; Field et al., 2008; Liggins et al.,
91 2021; Yilmaz et al., 2011). However, these initiatives can be easily missed by biodiversity
92 genomics researchers because they are often disseminated as discipline-specific outputs (e.g.,
93 publications, conference presentations, and blogs) or institution-specific internal documents.
94 This is further compounded by the absence of broad community standards administered by
95 funding bodies and institutions. Thus there are opportunities to centralise these existing
96 resources. There are also benefits for research teams in extending their networks beyond the

biodiversity genomics community to leverage the wealth of knowledge available across disciplines and institutes (e.g., information technologies (IT), data science, and human genomics).

By necessity, biodiversity genomics brings together diverse teams with broad interests. In this perspective, we aim to support biodiversity researchers, especially those with genomics expertise (i.e., data management practitioners), in embedding data management throughout the research lifecycle. We are a cross-institutional, interdisciplinary, multi-career stage collaborative team based in Aotearoa New Zealand, including biodiversity genomics researchers (NJF, JW, LL, TES), institutional and national eResearch and libraries staff (AA, FB, JH, DS), and researchers with experience in being responsive to Indigenous considerations pertaining to culturally significant biodiversity genomic data, both as Indigenous (MH) and non-Indigenous scholars (NJF, JW, LL, TES). We have lived experience with the caveats of applying data management theory to real-life research situations, through starting from scratch with new projects and minimal prior experience of data management, inheriting existing data sets that require careful curation, and adapting to a rapidly developing field where data types and associated data management practices have altered dramatically. Our extensive experience includes overseeing biodiversity genomic research projects, curating and managing biodiversity genomic datasets, developing project-specific data management plans (DMPs), and providing data management solutions to research teams, and much of this includes working with culturally significant data sets (e.g., Forsdick et al., 2021; Liggins et al., 2021; Magid et al., 2022; Rayne et al., 2022; Te Aika et al. 2023; Wold et al., 2023).

Through this contribution we aim to provide support to biodiversity genomics researchers in incorporating data management within their daily research practices by:

- 120 • describing typical data management experiences of individuals across the research
121 ecosystem;
- 122 • presenting solutions to the questions and challenges that may arise when documenting
123 and managing genomic datasets, and suggesting simple tools to support researchers in
124 adhering to the FAIR and CARE Guiding Principles;
- 125 • creating the Biodiversity Genomics Data Management Hub
126 (<http://genomicsaotearoa.github.io/data-management-resources/>) which contains curated
127 resources including guidelines and standards for data management, along with tips and
128 tricks that can be readily adopted and/or adapted for wide usage in biodiversity genomics
129 projects.

130 We encourage researchers to view data management practices as behaviours intrinsic to the
131 research process, and to adopt a mindset of adaptability to the various hurdles that may be
132 encountered along the way. Through sharing these perspectives, we hope to support emerging
133 researchers and the biodiversity genomics community more broadly on their data management
134 journeys, and ultimately to amplify the real-world impacts of biodiversity genomics research.

Box 2. Ethical considerations for biodiversity genomic data management

The potential for data misuse (e.g., cherry-picking, data theft, unpermitted use, sharing, or misappropriation) is ever-present throughout the data lifecycle (Cragin et al., 2010). Data misuse is harmful to the integrity of the research, science, and innovation sector, and has important social implications due in part to an erosion of public trust in science (Laurie et al., 2014). Misuse can have direct negative impacts for participants, communities, research partners, and end-users that may miss out on benefit-sharing as a consequence (a goal described in the Kunming-Montreal Global Biodiversity Framework, including for DSI). This harm can further extend to the research team, collaborators, and their institutes in the form of serious legal implications, reputational risk, and negative impacts on career trajectories. There are clear ethical processes for other aspects of research (such as regulatory bodies for human and animal ethics) but such ethical frameworks may not yet be established for the generation and storage of biodiversity genomic data (especially eDNA, plants, invertebrates, fungi).

Data management is a tool researchers can use to mitigate this risk and some institutes and communities are well-versed in defining and implementing consistent and effective data management practices. However we recognise that there remain gaps between knowing and doing, with different groups positioned at different points on their data management journeys. Nonetheless, good data management minimises the risks of data misuse, loss, or theft, improves transparency, and ensures data FAIRness within established parameters specific to those data.

It also seeks to find balance between ‘Open Data’ and ‘Accessible Data’, the latter of which may be more appropriate for data pertaining to species and locations significant to Indigenous Peoples (e.g., Henson et al., 2021; Rayne et al., 2022; Te Aika et al. 2023). To facilitate Indigenous data sovereignty, open data should be accompanied by metadata that includes details of appropriate permissions, which may include access restrictions. Local Contexts Notices and Biocultural Labels offer one such framework to support this (Anderson & Hudson 2020; Liggins et al., 2021).

135

136 Exploring biodiversity genomic data management challenges

137 Here we present four fictional user experience personas to describe data management needs
138 for individuals in different career stages and roles. These include a PhD starting their project, a
139 postdoc working on long established projects, a PI seeking to facilitate research and an
140 eResearch support staff member striving to support researchers. Using these personas, we aim
141 to highlight some of the many important considerations associated with genomic data
142 management. While we acknowledge that real life is not typically this tidy, we hope that
143 researchers may see their own experiences reflected through some combination of these
144 personas. The layers of challenges experienced by researchers may include the growing volume
145 and types of genomic data and metadata, rapid technological and methodological advances,
146 ensuring interoperability with metadata, and balancing openness and Indigenous data
147 sovereignty.

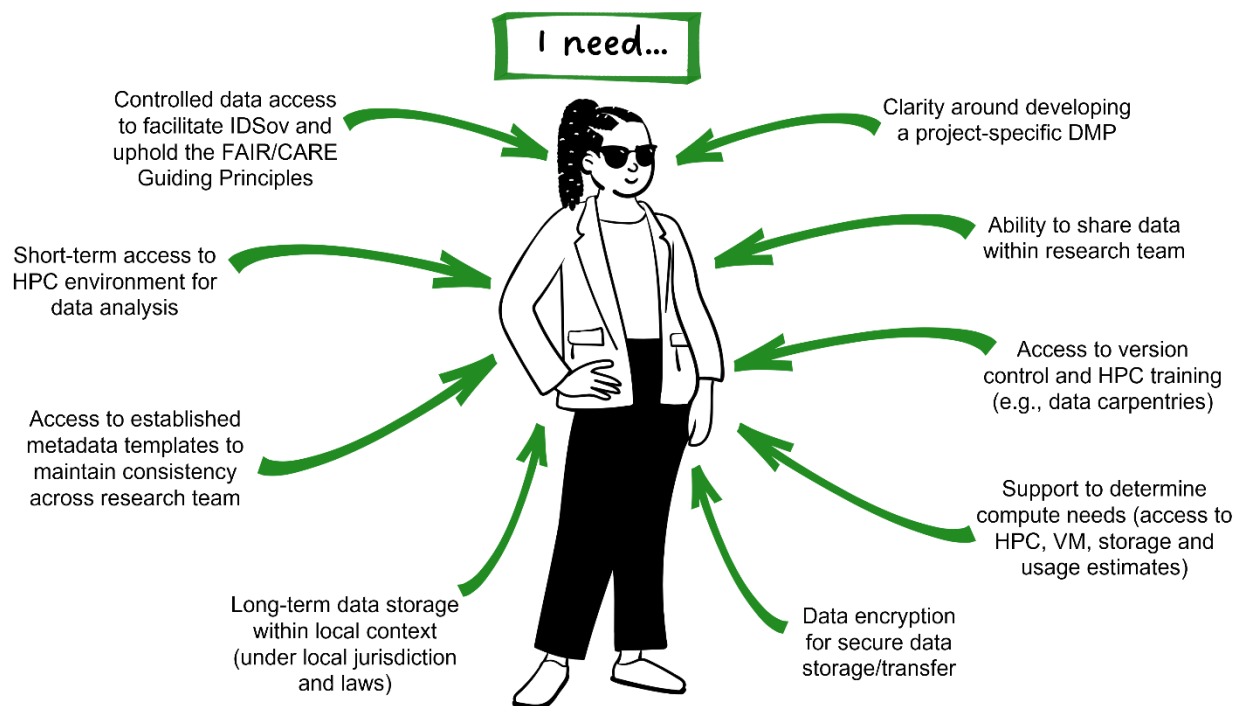
148 Persona 1. A student new to biodiversity genomics

149 New PhD student Taylor Smith (Figure 1) has started a research project that will generate
150 genomic data to inform conservation management for a culturally significant species (a recently
151 described species of endemic lizard). Their project involves data collection and generation,
152 analysis using the local compute infrastructure provided by their institute, and dissemination of
153 results to end-users including conservation practitioners and local communities. They will be
154 operating under a DMP adapted from the template used across their research team, and they
155 have access to internal training and external support structures.

156 Their research team is in the process of developing a research manual that includes daily data
157 management processes, along with on/offboarding procedures. Taylor is grateful for the
158 supportive research environment, as they feel comfortable asking questions and sharing
159 thoughts to help develop these processes. They are aware through conversations within their
160 PhD cohort that this is not the situation for everyone. While their data is yet to be generated,
161 being involved in these processes ensures they have a clear understanding of what will be
162 involved in managing their data.

163 The primary challenges Taylor's faces are in ensuring their data management practices facilitate
164 Indigenous data sovereignty and uphold both the FAIR and CARE Guiding Principles during the
165 active life-span of the project. To achieve these aims, they are relying on the guidance of
166 existing frameworks (e.g., Collier-Robinson et al. 2019; Mc Cartney et al. 2023; King & Steeves
167 2023), and are well-supported in this by their research team leader, Professor Nepia (Persona 3)
168 and the wider team. As the project has a defined end-date, they also want to ensure that there is
169 a framework in place to maintain these practices into the future. Communication around data
170 management is primarily with Professor Nepia, who maintains trust-based relationships with the

171 Indigenous Peoples that have strong cultural ties to the focal species, with support from
172 eResearch and libraries staff at their institute.



173
174 Figure 1. Examples of some typical data management needs that emerging researchers (e.g.,
175 postgraduate students) such as the persona of Taylor Smith are likely to have at the beginning
176 of their data management journeys. DMP: Data Management Plan. HPC: High-performance
177 compute. IDSov: Indigenous data sovereignty. VM: Virtual machine.

178 Persona 2. An early career researcher working collaboratively outside of
179 academia

180 Dr Atsushi Sato (Fig. 2) is a postdoctoral researcher at a national research institute, and
181 contributes to several large international biodiversity genomics collaborations (including with
182 Professor Nepia, Persona 3). These projects vary in scale, longevity, and data management
183 requirements. Each project Dr Sato is involved with has its own established DMP, so he must
184 take care to ensure that the workflows he uses for each project align with the respective DMP.

185 Although he has some input in research planning and dissemination of results, his primary focus
186 is on the analysis of large datasets, and specifically in incorporating environmental and climate
187 data alongside genomic data. To do this, he relies on comprehensive and consistent metadata
188 for each dataset.

189 He is experienced in biodiversity genomics, and is able to clearly report his data management
190 needs to eResearch and libraries staff at his research institute. These needs predominantly
191 relate to short-/mid-term storage and access, as the long-term storage of most of the datasets Dr
192 Sato works with is the responsibility of researchers at other institutes. Dr Sato also receives
193 support from eResearch staff that deliver the national high-performance computing (HPC)
194 infrastructure, where he can harness multithreading and parallel-processing for analysing these
195 large datasets.

196 Among the collaborators Dr Sato works alongside, there is a range of data literacy and data
197 management experience, which can create communication challenges. He is aware that some
198 data he has inherited was generated prior to development of practices including Indigenous
199 consultation and engagement, and data sovereignty for culturally significant data. His knowledge
200 of the shift in perspectives around these factors results in friction when he has made
201 suggestions regarding the inclusion of these aspects in DMPs, and he is aware that publication
202 of this data may be challenging due to the changes in journal publishing requirements. However,
203 he views these issues as the responsibility of the collaborator who has led this project since its
204 inception.

205 While Dr Sato's skills are in high demand, he has been persistently employed on precarious
206 short-term contracts. He finds this stressful, and is constantly looking for new opportunities that
207 may propel him towards his goal of attaining a permanent research position. These concerns

impact his research priorities, as he perceives trade-offs between time spent on data management and that spent on data analysis that can produce results that contribute towards his publication record. He is unwilling to risk conflict with his collaborators over the inclusion of data sovereignty and Indigenous engagement, as he fears that conflict may jeopardise his career prospects. From Dr Sato's perspective, data management is an onerous task.

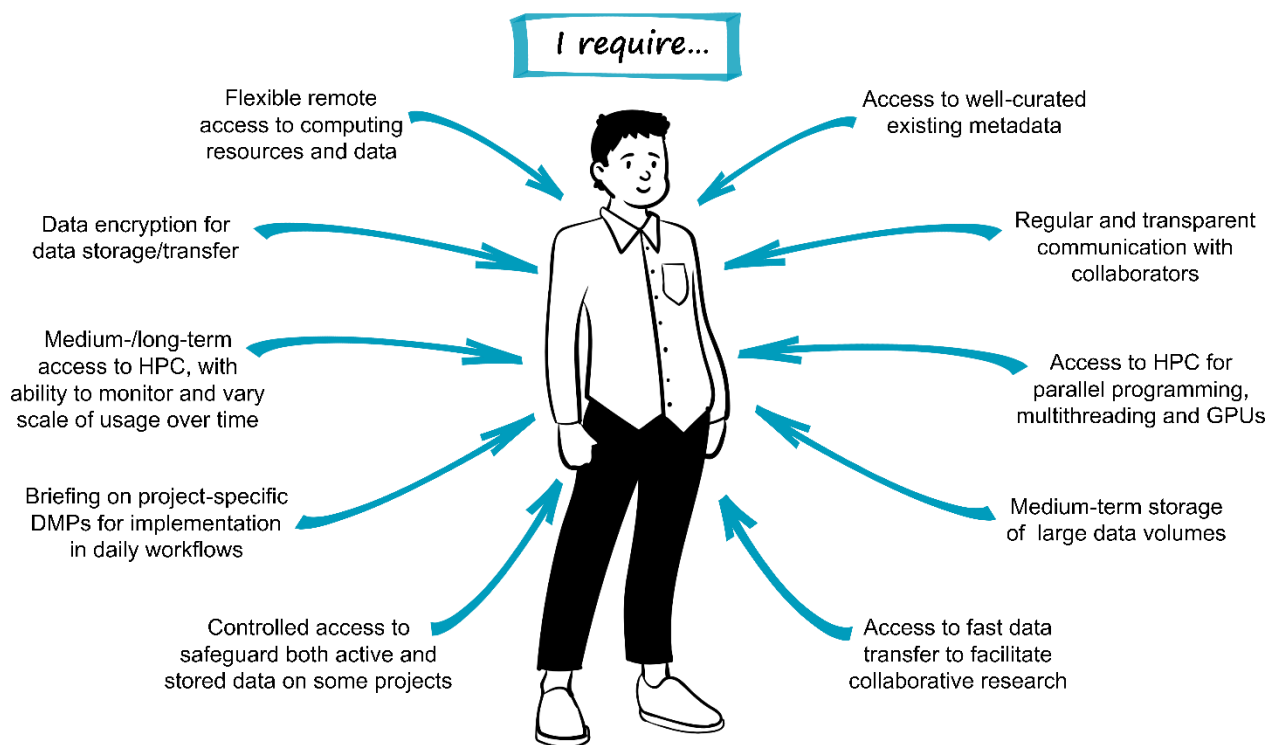


Figure 2. Examples of typical data management requirements experienced by researchers working in highly collaborative spaces (e.g., postdoctoral researchers and research associates), as exemplified by the persona of Dr Atsushi Sato. DMPs: Data Management Plans. HPC: High-performance compute. GPUs: Graphics processing units, often used to accelerate data processing.

Persona 3. A biodiversity genomics research team leader

Professor Tehara Nepia (Fig. 3) is a principal investigator at a university overseeing a conservation genomics research team including postgraduate students (including Taylor Smith,

222 Persona 1), postdoctoral researchers, and research associates (including Dr Atsushi Sato,
223 Persona 2). Her focus is on designing, facilitating, and disseminating research, and providing a
224 supportive environment that produces highly-skilled emerging researchers well-equipped to
225 contribute to the research, science, and innovation sector. Professor Nepia also places strong
226 emphasis on building and maintaining trusted relationships with research partners, including
227 Indigenous Peoples. A substantial part of her role includes seeking and managing resources
228 (including funding, computational resources, and data storage) for the research team.

229 As the volume of data generated by Professor Nepia's team is continually expanding, there is a
230 growing need to ensure a smooth transition of data (including metadata) between members of
231 her research team. Furthermore, Professor Nepia has observed extensive change in data types
232 and their associated data management practices during the course of her career. Professor
233 Nepia has a responsibility to meet institutional requirements, and she is also committed to
234 embedding data management practices that facilitate Indigenous data sovereignty and uphold
235 the FAIR and CARE Guiding Principles.

236 Professor Nepia is working towards establishing a DMP template for use across all her research
237 team's projects. To achieve this, she encourages open two-way communication with her
238 research team to gain their perspectives of the needs and challenges associated with data
239 management. She relies upon her research team to adhere to the DMPs, to support and
240 encourage each other to do this, and to seek strategic advice from her when needed. Beyond
241 the DMPs, Professor Nepia and her team co-develop research group guidelines that include
242 data management practices to streamline team on/offboarding, allowing new members to quickly
243 get up to speed, and providing clear expectations of data management for those departing.
244 Challenges may arise if she finds research team members becoming disengaged or unwilling
245 prioritise data management, so she needs to be able to pick up on these signals quickly and

provide the necessary support.

She also engages with colleagues in similar situations nationally and internationally, including her disciplinary research community. Keeping abreast of evolving best practices in the biodiversity genomics research community and updating the research team's DMP template accordingly is an added pressure on Professor Nepia's limited time; she never feels completely up-to-date with the latest developments but understands she must be the one in the research team to lead data management practices even if she is only able to support 'good' versus 'best' practice (Box 1). To help with this burden, Professor Nepia prioritises building strong relationships with local eResearch and libraries staff (including Darryl, Persona 4) that are based on transparent, timely, bi-directional communication. Through knowledge-sharing, eResearch and libraries staff help her to understand local data management capacity and constraints, and gain the necessary understanding of the project-specific nuances that enable delivery of wrap-around solutions that support the needs of the research team now and into the future.

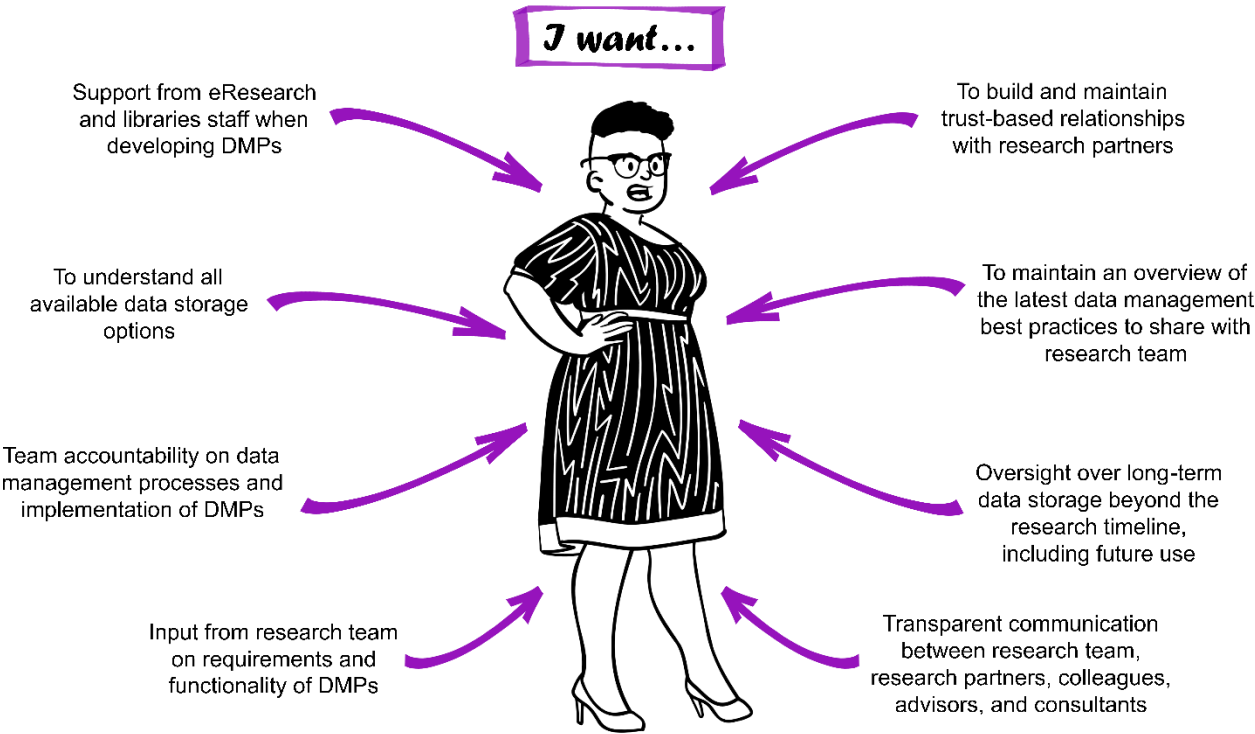


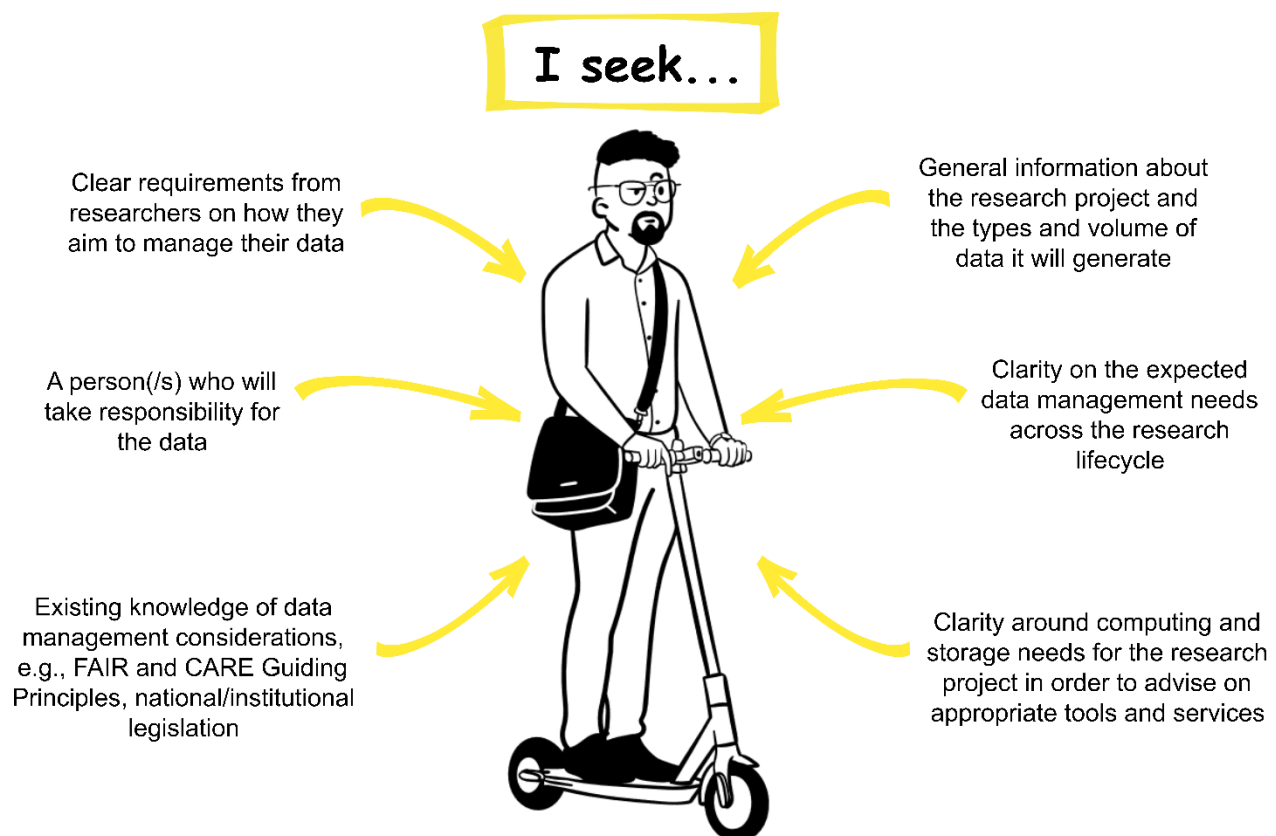
Figure 3. Examples of the types of support and level of oversight that research project leaders such as the persona of Professor Tehara Nepia may require when facilitating the development of consistent data management practices within their research teams (e.g., principal investigators). DMPs: Data Management Plans.

Persona 4. An eResearch staff member

Darryl Baker (Fig. 4) is an eResearch Manager at a university, and provides eResearch support to numerous research projects across all disciplines and departments, including providing advice and services relating to compute and data storage facilities for biodiversity genomic data. Darryl recognises how fortunate he is to be employed at an institute that recognises the value of eResearch staff and the need for consistent data management practices, and that his team are sufficiently resourced to provide the support required by researchers. Darryl manages the resource that is the institutional compute and storage facilities allocated to research. He keeps up to date with research-focused technologies, consults with research teams, and mentors researchers on the use of the available research systems. Over the past four years the storage facility of the institution has reached peak capacity, requiring careful resource management. Darryl seeks budget approval to expand the current on-premise storage facility. Based on quotes provided by vendors, purchasing additional storage infrastructure proves to be expensive. Further, it would only provide a short-term fix as the institution's research data is predicted to exceed the storage limit within five years.

Recently, Professor Nepia (Persona 3) reached out to Darryl for eResearch services and support for her biodiversity genomics research team. Professor Nepia's team generates a number of projects, with rapidly increasing data management needs over the last 10 years. Darryl meets with one of Professor Nepia's research students, Taylor Smith (Persona 1), to understand the eResearch needs of an upcoming project about a new species of lizard. During the meeting, Darryl gathers information about the data being produced. Early indications are that

285 this project will generate vast amounts of data and function under a DMP. Darryl wishes to
286 understand the project-specific needs in order to advise on appropriate storage and computing
287 solutions that will facilitate Indigenous data sovereignty and uphold the FAIR and CARE Guiding
288 Principles. Darryl holds a clear understanding of the constraints arising from the institutional
289 infrastructure, and the responsibilities of the researcher under national and institutional
290 legislation. Through conversations with researchers and research teams, Darryl can gain a clear
291 vision of what they are trying to achieve within these constraints, and provide advice and
292 solutions to overcome data management pain points that may arise.



295 Figure 4. Examples of typical needs of eResearch and libraries staff such as the persona of
296 Darryl Baker in the development and delivery of specialised data management solutions for
297 researchers and research teams.

298 Addressing the challenges

299 Following the description of these personas, it is clear that while each persona will experience
300 unique challenges, they also share common ones such as institutional support (e.g., the
301 provisioning of institutional guidelines and policies pertaining to data management) and
302 resourcing (e.g., time, funding allocations, and access to data storage solutions). Here, we
303 acknowledge the typical lag period between users identifying their own needs, institutional
304 recognition of the broad nature of these needs, and subsequent provisioning of resources (e.g.,
305 the development of guidelines/policies, infrastructure, and funding) to support these needs.

306 We then identified key data management questions that researchers across the biodiversity
307 genomics research ecosystem are likely to have based on the existing challenges and
308 uncertainties within the system, and propose solutions to support good data management
309 practices (Fig. 5). As every situation is different, we recognise that not all solutions will be
310 immediately adaptable to specific challenges, but may spark ideas.

311

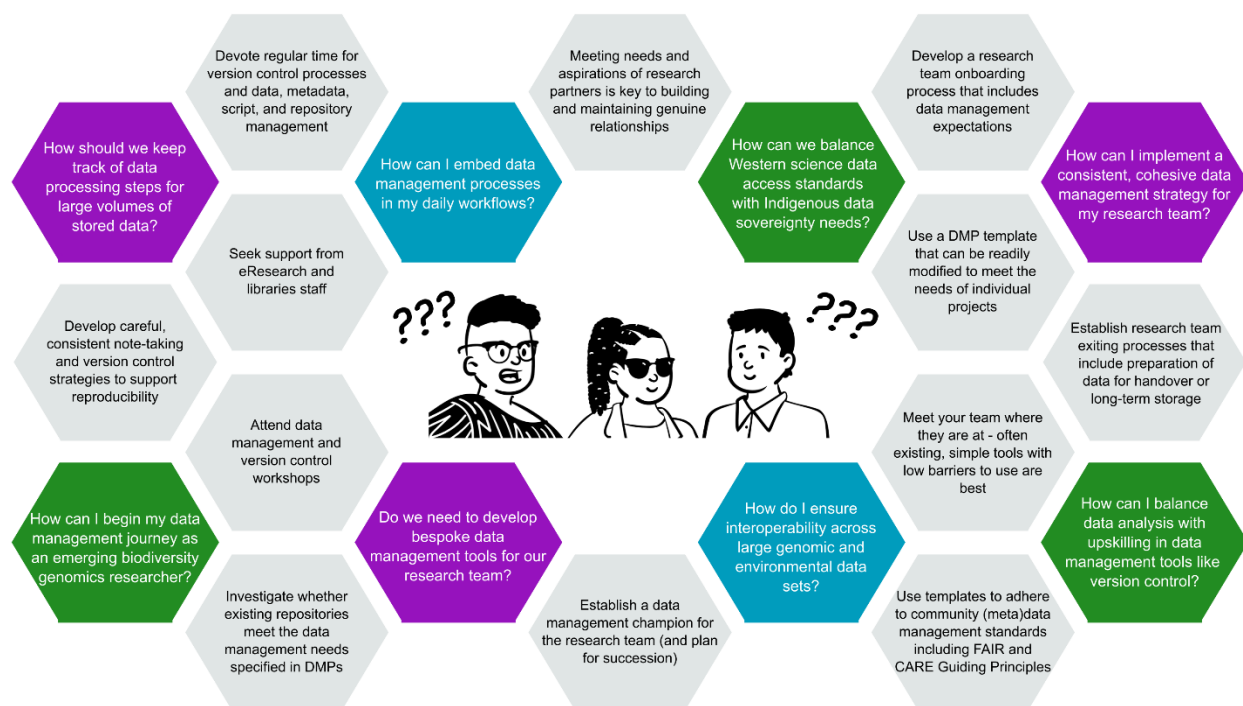


Figure 5. Key data management questions (coloured hexagons) that biodiversity genomic researchers and teams may have, along with potential (non-exhaustive) solutions (light grey hexagons) to support them during their data management journeys. Colours of the question hexagons are used to denote their relevance to the personas described above though we note that different personas may share common questions, and that solutions may address multiple challenges (green = postgraduate students, blue = postdoctoral researchers, research associates and ECRs, purple = principal investigators).

1. Resources to support researchers in implementing effective data management

To reduce the frustration often experienced by researchers on their journey towards best practices in data management, we have created the Biodiversity Genomics Data Management Hub (<https://genomicsaotearoa.github.io/data-management-resources/>) where we connect the challenges described in the personas to modules that provide topic-specific tips, tricks, and resources, including from beyond the traditional biodiversity genomics literature. Module content draws on the diversity of our experiences and knowledge, with topics including: ‘Hot, warm, and

cold data storage', 'Data Management Plans in practice', and 'Helping eResearch staff help you'. These tips and tricks are largely hard-won through the trials and tribulations experienced during our personal research journeys. We intend for the Hub to be a living resource that evolves over time, incorporating new tools and practices as these come to light. We welcome suggestions of additional module topics, along with contributions of the latest resources via the associated GitHub [‘Issues’](#) page for feedback and discussion. We envision that the Hub will be of special interest for emerging researchers, and will be useful as a teaching resource, instilling data management practices as part of daily workflows from the beginning of your research journey. The Hub may also provide an opportunity for those with an interest in data management outside of the genomics space to have the opportunity to peek ‘through the looking glass’ and gain insight into the similarities and differences with their own fields.

In assembling resources for the Hub to address challenges across personas, three overarching actions stood out as immediately accessible steps toward best practices for the biodiversity genomics community. Here, we elaborate on these.

2. Develop Data Management Plans

Biodiversity genomic data management tends to come into focus at the end rather than throughout the research lifecycle. Many journals that publish biodiversity genomic research have open data policies (e.g., the [Joint Data Archiving Policy](#)), and this may be the first instance at which researchers are required to demonstrate data management. Indeed, genomics broadly appears immature compared with other disciplines in terms of data management (e.g., data science, IT, and human genomics). For example, DMPs are often perceived as ‘nice to have’ but are not yet widely required. However, when working with the large volumes of data produced via genomic sequencing, and/or in research teams distributed across multiple institutions, data

management can quickly degenerate leaving the data, researchers, and research partners vulnerable (Box 2). Further, DMPs are one tool among many that will be required to achieve the benefit-sharing goals pertaining to genomic data as described in the Kunming-Montreal Global Biodiversity Framework (Decision 15/4: recognising the contributions and rights of Indigenous communities and Decision 15/9: the generation, access, and use of digital sequence information; <https://www.cbd.int/decisions/cop/?m=cop-15>).

DMPs are key tools for mitigating the risks of data loss and misuse. Where they do not already exist, we anticipate a widespread shift towards the establishment of data management policies within institutions and by research funding organisations (including the requirement of DMPs in research funding applications) in the near future (Bloemers & Montesanti, 2020; Fadlilmola et al., 2021; Jorgenson et al., 2021). Indeed, the primary research funding body in Aotearoa New Zealand, the Ministry of Business, Innovation and Employment, is shifting towards an open research policy (<https://www.mbie.govt.nz/science-and-technology/science-and-innovation/agencies-policies-and-budget-initiatives/open-research-policy/>) as many of its contemporaries have done (e.g., the Australian Research Council, the European Research Council, the National Institutes of Health), which may come to include a requirement for DMPs. We foresee that some of the challenges associated with requirements to provide DMPs during funding applications will be in ensuring cohesive frameworks for the development of DMPs that are fit for purpose, and more broadly in the development and maintenance of trusted data repositories at scale (Lin et al. 2020).

The inclusion of an approval and/or compliance pathway may be recommended to ensure that DMPs lead to meaningful actions in the improvement of data management in biodiversity genomics rather than simple ‘box-ticking’ or thought exercises. Specifically, approval pathways would require consideration of the DMP during the funding application process to determine

whether it is fit for purpose. In comparison, a compliance pathway requires researchers to demonstrate that data management actions have been carried out in accordance with the DMP provided. DMP approval and compliance regarding the FAIR Guiding Principles would require consideration by external assessment panels with discipline-specific knowledge and expertise. For data and metadata associated with species or locations significant to Indigenous Peoples (see Box 2), decisions around auditing and assessment of DMPs in relation to the CARE Guiding Principles can only be made by the associated Indigenous Peoples. Indigenous leadership across the research ecosystem, including professional and research staff, will be essential in the co-development of any such systems, with one important consideration being ensuring that DMPs are responsive to current contexts while remaining flexible for the future. Indeed, there will not be a ‘one size fits all’ solution for culturally significant data. We note here that supporting Indigenous research partners through the provision of adequate resourcing to inform DMPs will be essential (Te Aika et al. 2023).

While compliance is one method of ensuring that data management actions are implemented, research projects tend to change course over time, and a DMP designed during the planning stage may not provide the flexibility required to meet changing data needs later in the research lifecycle. Rather than using approvals or compliance processes to ensure appropriate data management actions are taken, a more appropriate approach could be to recognise a DMP as a live document throughout the research process, allowing for updates as the project changes. In this scenario, version control methods should be used to track changes throughout the project. During any process of revision of the DMP, it will be important to maintain regular and transparent communication with research partners whenever changes are being considered, to ensure that changes are fit for purpose, while continuing to accommodate the needs and interests of all parties. At the end of the project, the research team could complete a self-

reflective retrospective process, identifying which aspects went according to plan, where needs changed over time, and whether there were any limitations or challenges due to institutional or infrastructure constraints. This could help researchers to better understand the capabilities and capacities of their teams and systems, and inform future research design that includes DMP development. Further, by feeding back the learnings derived through this retrospective to associated eResearch and libraries staff will help to close the loop.

3. Seek support from eResearch and libraries staff

We challenge researchers to look beyond their immediate research community for assistance – help may be closer at hand than expected. Here we highlight the benefits of engaging with eResearch and libraries staff within or beyond your institute from an early stage in the research lifecycle. These professional staff are a supporting network holding knowledge and expertise in crafting solutions to data management challenges (Andrikopoulou et al., 2022). Researchers benefit from developing these relationships with staff who cultivate institutional knowledge and solutions that may not be captured in the traditional or domain-specific scientific literature. eResearch and libraries staff can provide guidance and targeted support in the co-development of project-specific data management strategies that take into account institutional operating requirements and the capacity and capability of existing infrastructure, and in incorporating data management practices into day-to-day research workflows.

eResearch and libraries staff may at times be overlooked due to the frequent tangible and intangible siloing of disciplines, resulting in researchers being unaware of how these staff can provide support, and unclear as to what their mandates are, with eResearch and libraries staff consequently unaware of the data management needs and challenges experienced by research teams. Further, eResearch and libraries staff are often spread thinly across institutions, with high

demand for their services but limited capacity to provide much-needed support. As such, building channels of communication between research teams and support staff is key, and both parties must be willing to come to the table to share and learn from one another.

Developing strong working relationships requires reciprocity, with an emphasis on mutual benefit (which may include academic acknowledgement) and respect for expertise on both sides. eResearch and libraries staff often require knowledge of the research context and learned experiences from researchers so they can provide and/or procure the necessary services and support, and researchers can also endeavour to engage with the technicalities and concepts necessary for full and fruitful discussions. We recommend that researchers meet early and often with eResearch and libraries staff to discuss their data management needs. Investing in these relationships ultimately means that researchers will get the wrap-around support they require, and eResearch and libraries staff will be kept apprised of their changing needs, facilitating the development of future-focussed solutions.

4. Establish a research data management culture in your team

It is vital to ensure the continuity of data management throughout the research lifecycle. We strongly encourage researchers to step up and take an active leadership role in situations where there is an absence of clear and consistent guidelines. However, data management is most effective when pursued as a team, with a consistent and cohesive plan and division of labour. A little effort early in the process can go a long way, and so we recommend that research teams develop clear documentation around on/offboarding procedures and daily data management practices. This will streamline the process of joining the team, provide guidance on the options for and constraints around data transfer, storage, and access, and a clear pathway to follow

444 when departing that may include ongoing access to data, or the packaging of data and metadata
445 for long-term storage.

446 As the importance of data management becomes increasingly recognised, but prior to the
447 establishment of institutional roles, we envision an opportunity to create a new role within
448 research teams – that of data management champion. We perceive such a role to be analogous
449 to that of a lab manager, providing support and oversight for research teams across all aspects
450 of data management. This role can ensure consistency despite the potential for frequent
451 turnover within research teams through overseeing the onboarding and training of new members
452 and ensure the implementation of consistent data management practices across the research
453 team. While anyone can take on this transferable role, a data management champion will ideally
454 have a mid- to long-term position within the research team, hold a deep understanding of the
455 unique characteristics of each research project, and have the necessary level of autonomy to
456 operate independently as a leader in this role. The data management champion can also
457 operate as a conduit between the research team and eResearch and libraries staff, and so
458 excellent people skills will be advantageous. By engaging regularly and often with their institute's
459 support structures, they can ensure that eResearch and libraries staff are kept up to date with
460 the changing needs of the team and ensure access to the latest services and support.

461 Given the importance of such a role, succession planning will be essential to ensure consistency
462 and continuity for the research team. While we are currently aware of few research teams that
463 have a data management champion, we perceive this as a 'next step' in the community's
464 collective data management journey. We emphasise the need for such a role to well-resourced,
465 to avoid burdening individuals with additional (unpaid) responsibilities that may detract from their
466 personal research trajectories. Further, we consider that the responsibilities delivered in this

position will be highly transferable and sought after. For some researchers, this may be a step towards taking up other management responsibilities or roles in the future.

Continuing the data management journey

Here we have presented tips and tricks to support biodiversity genomics researchers in the development of good data management practices, though we emphasise that *any data management is better than none*. Data management is a journey, and we are all on an aspirational path striving towards best practice. We trust our contribution, both here and in the Biodiversity Genomics Data Management Hub, will be a helpful guide for researchers new to biodiversity genomics, and a useful prompt for existing researchers to start data management planning early in the research lifecycle (e.g., when writing proposals) and to embed good data management practices into their daily research routines. Further, we are confident this contribution demonstrates the need for data management infrastructure and practices to be included as key aspects of the research lifecycle that require designated resourcing and institutional support across a broad range of disciplines.

Glossary

- Accessible data. Data accessible under well-defined conditions, as per the FAIR Guiding Principles (Mons et al., 2017; Wilkinson et al., 2016).
- CARE Principles for Indigenous Data Governance. Designed to complement the FAIR Guiding Principles, these people- and purpose-oriented principles and supporting concepts (Collective benefit, Authority to control, Responsibility, Ethics) reflect the crucial role of data in advancing innovation, governance, and self-determination among Indigenous Peoples (Carroll et al. 2020; 2021). <https://www.gida-global.org/care>.
- Data lifecycle. The steps in the research process specifically pertaining to data, from planning, collection and generation, analysis and collaboration, evaluation, storage, dissemination, access, and reuse, which can contribute to the planning for new data generation. The data and research lifecycles are distinct but interrelated.
- Data management. The processes and practices associated with the documentation and storage of and access to data and associated metadata throughout the research lifecycle.
- DMP. Data management plan. A document describing the data that will be generated during a research project, and how it will be used, accessed, and stored during the research lifecycle. Also known as a data management and sharing plan, though in our definition of data management, data sharing is inherently included in data access.

- eResearch. The use of digital tools and techniques to advance research.
- eResearch and libraries staff. A broad group that includes research software engineers, research infrastructure developers, data scientists, data stewards, and other professional services staff that deliver library, IT, bioinformatics, and high-performance compute support.
- FAIR Guiding Principles. Guidelines for scientific data management and stewardship intended to improve the Findability, Accessibility, Interoperability, and Reuse of digital assets (Wilkinson et al. 2016). <https://www.go-fair.org/fairprinciples/>
- Indigenous data. The tangible and/or intangible cultural materials, belongings, knowledge, digital data, and information about Indigenous Peoples or that to which they relate (Lovett et al., 2019; Rainie et al., 2019).
- Indigenous data sovereignty. The expression of a legitimate right of Indigenous Peoples to control the access, the collection, ownership, application and governance of their own data, knowledge, and/or information that derives from unique cultural histories, expressions, practices, and contexts (<https://localcontexts.org/indigenous-data-sovereignty/>).
- Metadata. Data that provides information about other data. For biodiversity genomic data, metadata can provide information regarding context (e.g., taxonomic, spatial, temporal, and associated permissions) as well as used technologies/methodologies.
- Open data. Data anyone can use and share, typically openly accessible and with an open licence.

- Research lifecycle. The steps in the process of scientific research from inception (research planning, design, and funding) to completion (dissemination of results and real-world impact), which often leads back to development of new related projects. The research and data lifecycles are distinct but interrelated.
- VM: Virtual machine. A software-based computer system emulating that of a different physical machine, often used to run a different operating system than that of the primary system of the physical computer

481

482 Acknowledgements

483 We wish to thank the following people for their thoughtful advice, insights, and friendly feedback
484 during the development of this project: Mik Black, Thomas Buckley, Eric D. Crandall, Manpreet
485 Dhami, Tom Etherington, Leanne Elder, Stephanie Galla, Tipene Merritt and the University of
486 Canterbury (UC) eResearch Co-Design Group, David Medyckyj-Scott, Nick Spencer, Matt Stott,
487 and the UC ConSERTeam.

488 Author Contributions

489 NF, JW and TES conceived the research. All authors provided input into the research direction
490 and contributed through robust discussion towards the development of the manuscript and the
491 creation of the Biodiversity Genomic Data Management Hub. JH provided illustrations. NF and
492 JW wrote the first draft of the manuscript, and led the writing of subsequent drafts. All authors
493 provided feedback and approved the final manuscript.

Benefit-Sharing Statement

Benefits Generated: A cross-institutional, interdisciplinary research collaboration was developed with all collaborators included as co-authors. Benefits from this collaboration accrue through the provision of the Biodiversity Genomic Data Management Hub, which is shared as a publicly available web resource to support biodiversity genomics researchers in improving data management practices across the data lifecycle. This research is timely given predicted changes in research funding requirements to include Data Management Plans.

Data Accessibility Statement

No data was produced or analysed in the development of this manuscript.

References

- Anderson, J., & Hudson, M. (2020). The Biocultural Labels Initiative: Supporting Indigenous rights in data derived from genetic resources. *Biodiversity Information Science and Standards*, 4, e59230. <https://doi.org/10.3897/biss.4.59230>
- Andrikopoulou, A., Rowley, J., & Walton, G. (2022). Research Data Management (RDM) and the Evolving Identity of Academic Libraries and Librarians: A Literature Review. *New Review of Academic Librarianship*, 28(4), 349–365. <https://doi.org/10.1080/13614533.2021.1964549>
- Baker, M. (2016). 1,500 scientists lift the lid on reproducibility. *Nature*, 533(7604), Article 7604. <https://doi.org/10.1038/533452a>
- Batley, J., & Edwards, D. (2009). Genome sequence data: Management, storage, and visualization. *BioTechniques*, 46(5), 333–336. <https://doi.org/10.2144/000113134>
- Beninde, J., Toffelmier, E., & Shaffer, H. B. (2022). A brief history of population genetic research in California and an evaluation of its utility for conservation decision-making. *Journal of Heredity*, 113(6), 604–614. <https://doi.org/10.1093/jhered/esac049>
- Bloemers, M., & Montesanti, A. (2020). The FAIR Funding Model: Providing a Framework for Research Funders to Drive the Transition toward FAIR Data Management and Stewardship Practices. *Data Intelligence*, 2(1–2), 171–180. https://doi.org/10.1162/dint_a_00039
- Carroll, S. R., Garba, I., Figueroa-Rodríguez, O. L., Holbrook, J., Lovett, R., Materechera, S., Parsons, M., Raseroka, K., Rodríguez-Lonebear, D., Rowe, R., Sara, R., Walker, J. D., Anderson, J., & Hudson, M. (2020). The CARE Principles for Indigenous Data Governance. *Data Science Journal*, 19(1), Article 1. <https://doi.org/10.5334/dsj-2020-043>

- Carroll, S. R., Herczog, E., Hudson, M., Russell, K., & Stall, S. (2021). Operationalizing the CARE and FAIR Principles for Indigenous data futures. *Scientific Data*, 8(1), Article 1. <https://doi.org/10.1038/s41597-021-00892-0>
- Chiang, G.-T., Clapham, P., Qi, G., Sale, K., & Coates, G. (2011). Implementing a genomic data management system using iRODS in the Wellcome Trust Sanger Institute. *BMC Bioinformatics*, 12(1), 361. <https://doi.org/10.1186/1471-2105-12-361>
- Collier-Robinson, L., Rayne, A., Rupene, M., Thoms, C., & Steeves, T. (2019). Embedding indigenous principles in genomic research of culturally significant species: A conservation genomics case study. *New Zealand Journal of Ecology*, 43(3). <https://doi.org/10.20417/nzjecol.43.36>
- Cragin, M. H., Palmer, C. L., Carlson, J. R., & Witt, M. (2010). Data sharing, small science and institutional repositories. *Philosophical Transactions of the Royal Society A: Mathematical, Physical and Engineering Sciences*, 368(1926), 4023–4038. <https://doi.org/10.1098/rsta.2010.0165>
- Crandall, E. D., Riginos, C., Bird, C. E., Liggins, L., Trembl, E., Beger, M., Barber, P. H., Connolly, S. R., Cowman, P. F., DiBattista, J. D., Eble, J. A., Magnuson, S. F., Horne, J. B., Kochzius, M., Lessios, H. A., Liu, S. Y. V., Ludt, W. B., Madduppa, H., Pandolfi, J. M., ... Gaither, M. R. (2019). The molecular biogeography of the Indo-Pacific: Testing hypotheses with multispecies genetic patterns. *Global Ecology and Biogeography*, 28(7), 943–960. <https://doi.org/10.1111/geb.12905>
- Crandall, E. D., Toczydlowski, R. H., Liggins, L., Holmes, A. E., Ghoojaei, M., Gaither, M. R., Wham, B. E., Pritt, A. L., Noble, C., Anderson, T. J., Barton, R. L., Berg, J. T., Beskid, S. G., Delgado, A., Farrell, E., Himmelsbach, N., Queeno, S. R., Trinh, T., Weyand, C., ... Toonen, R. J. (2023). Importance of timely metadata curation to the global surveillance of genetic diversity. *Conservation Biology*, 00(e14061). <https://doi.org/10.1111/cobi.14061>
- Duntsch, L., Whibley, A., Brekke, P., Ewen, J. G., & Santure, A. W. (2021). Genomic data of different resolutions reveal consistent inbreeding estimates but contrasting homozygosity landscapes for the threatened Aotearoa New Zealand hihi. *Molecular Ecology*, 30(23), 6006–6020. <https://doi.org/10.1111/mec.16068>
- Eisner, D. A. (2018). Reproducibility of science: Fraud, impact factors and carelessness. *Journal of Molecular and Cellular Cardiology*, 114, 364–368. <https://doi.org/10.1016/j.yjmcc.2017.10.009>
- Exposito-Alonso, M., Booker, T. R., Czech, L., Gillespie, L., Hateley, S., Kyriazis, C. C., Lang, P. L. M., Leventhal, L., Nogues-Bravo, D., Pagowski, V., Ruffley, M., Spence, J. P., Toro Arana, S. E., Weiß, C. L., & Zess, E. (2022). Genetic diversity loss in the Anthropocene. *Science*, 377(6613), 1431–1435. <https://doi.org/10.1126/science.abn5642>
- Fadlelmola, F. M., Zass, L., Chaouch, M., Samtal, C., Ras, V., Kumuthini, J., Panji, S., & Mulder, N. (2021). Data Management Plans in the genomics research revolution of Africa: Challenges and recommendations. *Journal of Biomedical Informatics*, 122, 103900. <https://doi.org/10.1016/j.jbi.2021.103900>
- Field, D., Garrity, G., Gray, T., Morrison, N., Selengut, J., Sterk, P., Tatusova, T., Thomson, N., Allen, M. J., Angiuoli, S. V., Ashburner, M., Axelrod, N., Baldauf, S., Ballard, S., Boore, J., Cochrane, G., Cole, J., Dawyndt, P., De Vos, P., ... Wipat, A. (2008). The minimum information about a genome sequence (MIGS) specification. *Nature Biotechnology*, 26(5), Article 5. <https://doi.org/10.1038/nbt1360>
- Forsdick, N. J., Martini, D., Brown, L., Cross, H. B., Maloney, R. F., Steeves, T. E., & Knapp, M. (2021). Genomic sequencing confirms absence of introgression despite past hybridisation between a critically endangered bird and its common congener. *Global Ecology and Conservation*, 28, e01681. <https://doi.org/10.1016/j.gecco.2021.e01681>

- Grigoriev, I. V., Nordberg, H., Shabalov, I., Aerts, A., Cantor, M., Goodstein, D., Kuo, A., Minovitsky, S., Nikitin, R., Ohm, R. A., Otilar, R., Poliakov, A., Ratnere, I., Riley, R., Smirnova, T., Rokhsar, D., & Dubchak, I. (2012). The Genome Portal of the Department of Energy Joint Genome Institute. *Nucleic Acids Research*, 40(D1), D26–D32. <https://doi.org/10.1093/nar/gkr947>
- Henson, L., Balkenhol, N., Gustas, R., Adams, M., Walkus, J., Housty, W., Stronen, A., Moody, J., Service, C., Reece, D., vonHoldt, B., McKechnie, I., Koop, B., & Darimont, C. (2021). Convergent geographic patterns between grizzly bear population genetic structure and Indigenous language groups in coastal British Columbia, Canada. *Ecology and Society*, 26(3). <https://doi.org/10.5751/ES-12443-260307>
- Hoban, S., Archer, F. I., Bertola, L. D., Bragg, J. G., Breed, M. F., Bruford, M. W., Coleman, M. A., Ekblom, R., Funk, W. C., Grueber, C. E., Hand, B. K., Jaffé, R., Jensen, E., Johnson, J. S., Kershaw, F., Liggins, L., MacDonald, A. J., Mergeay, J., Miller, J. M., ... Hunter, M. E. (2022). Global genetic diversity status and trends: Towards a suite of Essential Biodiversity Variables (EBVs) for genetic composition. *Biological Reviews*, 97(4), 1511–1538. <https://doi.org/10.1111/brv.12852>
- Jorgenson, L. A., Wolinetz, C. D., & Collins, F. S. (2021). Incentivizing a New Culture of Data Stewardship: The NIH Policy for Data Management and Sharing. *JAMA*, 326(22), 2259–2260. <https://doi.org/10.1001/jama.2021.20489>
- Khan, A., Patel, K., Shukla, H., Viswanathan, A., van der Valk, T., Borthakur, U., Nigam, P., Zachariah, A., Jhala, Y. V., Kardos, M., & Ramakrishnan, U. (2021). Genomic evidence for inbreeding depression and purging of deleterious genetic variation in Indian tigers. *Proceedings of the National Academy of Sciences*, 118(49), e2023018118. <https://doi.org/10.1073/pnas.2023018118>
- King J, Steeves TE (2023). From braided river to He Awa Whiria. In: He Awa Whiria Braiding the knowledge streams in research, policy and practice. Eds: Sonja Macfarlane, Melissa Derby & Angus Macfarlane. Canterbury University Press. In press.
- Lau, J. W., Lehnert, E., Sethi, A., Malhotra, R., Kaushik, G., Onder, Z., Groves-Kirkby, N., Mihajlovic, A., DiGiovanna, J., Srdic, M., Bajcic, D., Radenkovic, J., Mladenovic, V., Krstanovic, D., Arsenijevic, V., Klisic, D., Mitrovic, M., Bogicevic, I., Kural, D., ... Seven Bridges CGC Team. (2017). The Cancer Genomics Cloud: Collaborative, Reproducible, and Democratized-A New Paradigm in Large-Scale Computational Research. *Cancer Research*, 77(21), e3–e6. <https://doi.org/10.1158/0008-5472.CAN-17-0387>
- Laurie, G., Jones, K. H., Stevens, L., & Dobbs, C. (2014). *A Review of Evidence Relating to Harm Resulting from Uses of Health and Biomedical Data* (p. 210). Nuffield Council on Bioethics. https://www.pure.ed.ac.uk/ws/portalfiles/portal/19402878/Review_of_Evidence_Relating_to_Harms_Resulting_from_Uses_of_Health_and_Biomedical_Data_FINAL.pdf
- Leigh, D. M., van Rees, C. B., Millette, K. L., Breed, M. F., Schmidt, C., Bertola, L. D., Hand, B. K., Hunter, M. E., Jensen, E. L., Kershaw, F., Liggins, L., Luikart, G., Manel, S., Mergeay, J., Miller, J. M., Segelbacher, G., Hoban, S., & Paz-Vinas, I. (2021). Opportunities and challenges of macrogenetic studies. *Nature Reviews Genetics*, 22(12), Article 12. <https://doi.org/10.1038/s41576-021-00394-0>
- Liggins, L., Hudson, M., & Anderson, J. (2021). Creating space for Indigenous perspectives on access and benefit-sharing: Encouraging researcher use of the Local Contexts Notices. *Molecular Ecology*, 30(11), 2477–2482. <https://doi.org/10.1111/mec.15918>
- Lin, D., Crabtree, J., Dillo, I., Downs, R. R., Edmunds, R., Giaretta, D., De Giusti, M., L'Hours, H., Hugo, W., Jenkyns, R., Khodiyar, V., Martone, M. E., Mokrane, M., Navale, V., Petters, J., Sieman, B., Sokolova, D. V., Stockhause, M., & Westbrook, J. (2020). The

- TRUST Principles for digital repositories. *Scientific Data*, 7(1), Article 1.
<https://doi.org/10.1038/s41597-020-0486-7>
- Liu, L., Bosse, M., Megens, H.-J., de Visser, M., A. M. Groenen, M., & Madsen, O. (2021). Genetic consequences of long-term small effective population size in the critically endangered pygmy hog. *Evolutionary Applications*, 14(3), 710–720.
<https://doi.org/10.1111/eva.13150>
- Lovett, R., Lee, V., Kukutai, T., Cormack, D., Rainie, S. C., & Walker, J. (2019). Good data practices for Indigenous data sovereignty and governance. In *Good data* (pp. 26–36). Institute of Network Cultures Inc.
- Magid, M., Wold, J. R., Moraga, R., Cubrinovska, I., Houston, D. M., Gartrell, B. D., & Steeves, T. E. (2022). Leveraging an existing whole-genome resequencing population data set to characterize toll-like receptor gene diversity in a threatened bird. *Molecular Ecology Resources*, 22(7), 2810–2825. <https://doi.org/10.1111/1755-0998.13656>
- Mc Cartney, A. M., Head, M. A., Tsosie, K. S., Sterner, B., Glass, J. R., Paez, S., Geary, J., & Hudson, M. (2023). Indigenous peoples and local communities as partners in the sequencing of global eukaryotic biodiversity. *Npj Biodiversity*, 2(1), Article 1.
<https://doi.org/10.1038/s44185-023-00013-7>
- Möller, S., Prescott, S. W., Wirzenius, L., Reinholdtsen, P., Chapman, B., Prins, P., Soiland-Reyes, S., Klötzl, F., Bagnacani, A., Kalaš, M., Tille, A., & Crusoe, M. R. (2017). Robust Cross-Platform Workflows: How Technical and Scientific Communities Collaborate to Develop, Test and Share Best Practices for Data Analysis. *Data Science and Engineering*, 2(3), 232–244. <https://doi.org/10.1007/s41019-017-0050-4>
- Mons, B., Neylon, C., Velterop, J., Dumontier, M., da Silva Santos, L. O. B., & Wilkinson, M. D. (2017). Cloudy, increasingly FAIR; revisiting the FAIR Data guiding principles for the European Open Science Cloud. *Information Services & Use*, 37(1), 49–56.
<https://doi.org/10.3233/ISU-170824>
- Ozaki, K., Ohnishi, Y., Iida, A., Sekine, A., Yamada, R., Tsunoda, T., Sato, H., Sato, H., Hori, M., Nakamura, Y., & Tanaka, T. (2002). Functional SNPs in the lymphotoxin- α gene that are associated with susceptibility to myocardial infarction. *Nature Genetics*, 32(4), Article 4.
<https://doi.org/10.1038/ng1047>
- Rainie, S. C., Kukutai, T., Walter, M., Figueroa-Rodríguez, O. L., Walker, J., & Axelsson, P. (2019). Indigenous data sovereignty. In *The State of Open Data: Histories and Horizons* (pp. 300–319). African Minds and International Development Research Centre.
- Rayne, A., Blair, S., Dale, M., Flack, B., Hollows, J., Moraga, R., Parata, R. N., Rupene, M., Tamati-Elliffe, P., Wehi, P. M., Wylie, M. J., & Steeves, T. E. (2022). Weaving place-based knowledge for culturally significant species in the age of genomics: Looking to the past to navigate the future. *Evolutionary Applications*, 15(5), 751–772.
<https://doi.org/10.1111/eva.13367>
- Riginos, C., Crandall, E. D., Liggins, L., Gaither, M. R., Ewing, R. B., Meyer, C., Andrews, K. R., Euclide, P. T., Titus, B. M., Therikildsen, N. O., Salces-Castellano, A., Stewart, L. C., Toonen, R. J., & Deck, J. (2020). Building a global genomics observatory: Using GEOME (the Genomic Observatories Metadatabase) to expedite and improve deposition and retrieval of genetic data and metadata for biodiversity research. *Molecular Ecology Resources*, 20(6), 1458–1469. <https://doi.org/10.1111/1755-0998.13269>
- Robledo-Ruiz, D. A., Gan, H. M., Kaur, P., Dudchenko, O., Weisz, D., Khan, R., Lieberman Aiden, E., Osipova, E., Hiller, M., Morales, H. E., Magrath, M. J. L., Clarke, R. H., Sunnucks, P., & Pavlova, A. (2022). Chromosome-length genome assembly and linkage map of a critically endangered Australian bird: The helmeted honeyeater. *GigaScience*, 11, giac025. <https://doi.org/10.1093/gigascience/giac025>

- Schadt, E. E., Linderman, M. D., Sorenson, J., Lee, L., & Nolan, G. P. (2010). Computational solutions to large-scale data management and analysis. *Nature Reviews Genetics*, 11(9), Article 9. <https://doi.org/10.1038/nrg2857>
- Stieglitz, S., Wilms, K., Mirbabaie, M., Hofeditz, L., Brenger, B., López, A., & Rehwald, S. (2020). When are researchers willing to share their data? – Impacts of values and uncertainty on open data in academia. *PLOS ONE*, 15(7), e0234172. <https://doi.org/10.1371/journal.pone.0234172>
- Te Aika B, Liggins L, Rye C, Perkins E, Huh J, Brauning R, Godfery T, Black MA (2023) Aotearoa Genomic Data Repository: An āhuru mōwai for taonga species sequencing data. *Molecular Ecology Resources*: in press.
- Toczydlowski, R. H., Liggins, L., Gaither, M. R., Anderson, T. J., Barton, R. L., Berg, J. T., Beskid, S. G., Davis, B., Delgado, A., Farrell, E., Ghoojaei, M., Himmelsbach, N., Holmes, A. E., Queeno, S. R., Trinh, T., Weyand, C. A., Bradburd, G. S., Riginos, C., Toonen, R. J., & Crandall, E. D. (2021). Poor data stewardship will hinder global genetic diversity surveillance. *Proceedings of the National Academy of Sciences*, 118(34), e2107934118. <https://doi.org/10.1073/pnas.2107934118>
- Wilkinson, M. D., Dumontier, M., Aalbersberg, IJ. J., Appleton, G., Axton, M., Baak, A., Blomberg, N., Boiten, J.-W., da Silva Santos, L. B., Bourne, P. E., Bouwman, J., Brookes, A. J., Clark, T., Crosas, M., Dillo, I., Dumon, O., Edmunds, S., Evelo, C. T., Finkers, R., ... Mons, B. (2016). The FAIR Guiding Principles for scientific data management and stewardship. *Scientific Data*, 3(1), Article 1. <https://doi.org/10.1038/sdata.2016.18>
- Wold, J. R., Guhlin, J. G., Dearden, P. K., Santure, A. W., & Steeves, T. E. (2023). The promise and challenges of characterising genome-wide structural variants: A case study in a critically endangered parrot. *Molecular Ecology Resources*. <https://doi.org/10.1111/1755-0998.13783>
- Wright, S. (1922). Coefficients of Inbreeding and Relationship. *The American Naturalist*, 56(645), 330–338. <https://doi.org/10.1086/279872>
- Yilmaz, P., Kottmann, R., Field, D., Knight, R., Cole, J. R., Amaral-Zettler, L., Gilbert, J. A., Karsch-Mizrachi, I., Johnston, A., Cochrane, G., Vaughan, R., Hunter, C., Park, J., Morrison, N., Rocca-Serra, P., Sterk, P., Arumugam, M., Bailey, M., Baumgartner, L., ... Glöckner, F. O. (2011). Minimum information about a marker gene sequence (MIMARKS) and minimum information about any (x) sequence (MlxS) specifications. *Nature Biotechnology*, 29(5), Article 5. <https://doi.org/10.1038/nbt.1823>