



The origin of the sediment yield of the Ob' and the Yenisei




The origin of the sediment yield of the Ob' and the Yenisei

Victor Ivanov, Sergey Chalov
Moscow State University, Geography faculty, Land hydrology department
viktoro.1998@yandex.ru




Introduction, the aim goal of the research

The aim of work - estimation of sediment budget of the Ob' and the Yenisei by empirical data of field sampling at mouth of the Ob' and Yenisei; ESB data, hydrological calculations, and observed and estimated erosion.




Call for collaboration and discussion



I want your RIVER BASIN for SEDIMENT BUDGET calculation

Bank erosion calculation

The role of bank erosion for big rivers is massive, especially it grows for the river with big dams upstream. Estimation of sediment budget for the Ob' and the Yenisei obligatory need to include the block of bank/valley erosion. Some ESBs with high resolution for length (~ 1 km) with multi-time scale data (annual data). Goodstart allows solving this task on a global scale. The algorithm of these calculations is illustrated below:



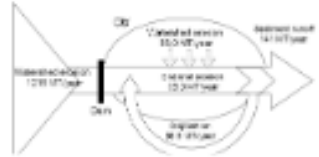
Watershed erosion calculation

Watershed erosion at soil loss were estimated with the watershed popular method of P/Q, RUSLE, spatially distributed models, which looks for multiplication of 4 main parameters (P, R, K, C), influenced of soil loss, for each cell. The sources for these parameters calculation mentioned in the table below. The adaptation of this calculation for forest-watershed was made by the land cover (LC) factor value from the literature overview (Pampano et al., 2012), (Morgan, 2005), (Fernandez et al., 2003).

LC is P/R/LB/C

Parameter	Value	Source
P (mm/year)	1000	USDA, 1970
R (mm/year)	1000	USDA, 1970
K (mm/year)	1000	USDA, 1970
C (mm/year)	1000	USDA, 1970

Results



[CHAT INFO](#) [AUTHOR INFORMATION](#) [ABSTRACT](#) [REFERENCES](#) [CONTACT AUTHOR](#) [PRINT](#) [GET POSTER](#)

Victor Ivanov, Sergey Chalov

Moscow State University, Geography faculty, Land hydrology department
viktoro.1998@yandex.ru

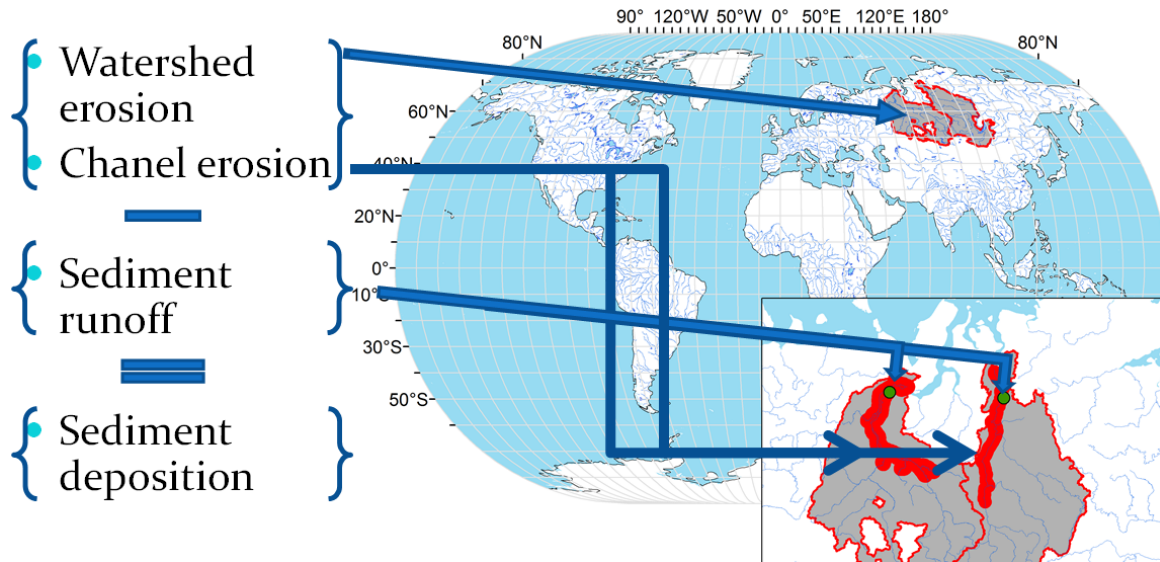


PRESENTED AT:



INTRODUCTION, THE AIM GOAL OF THE RESEARCH

The aim of work – estimation of sediment budget of the Ob' and the Yenisei by empirical data of field sampling at ends of the Ob' and Yenisei; GIS data; hydrological calculations and channel and watershed erosion.



If watershed erosion and channel/bank erosion can be calculated by modeling and remote sensing data, the sediment yield was measured at the mouths of rivers, the total deposition for all of the watershed can be estimated with normal accuracy only as a difference between sources (erosion) and sinks (sediment yield).

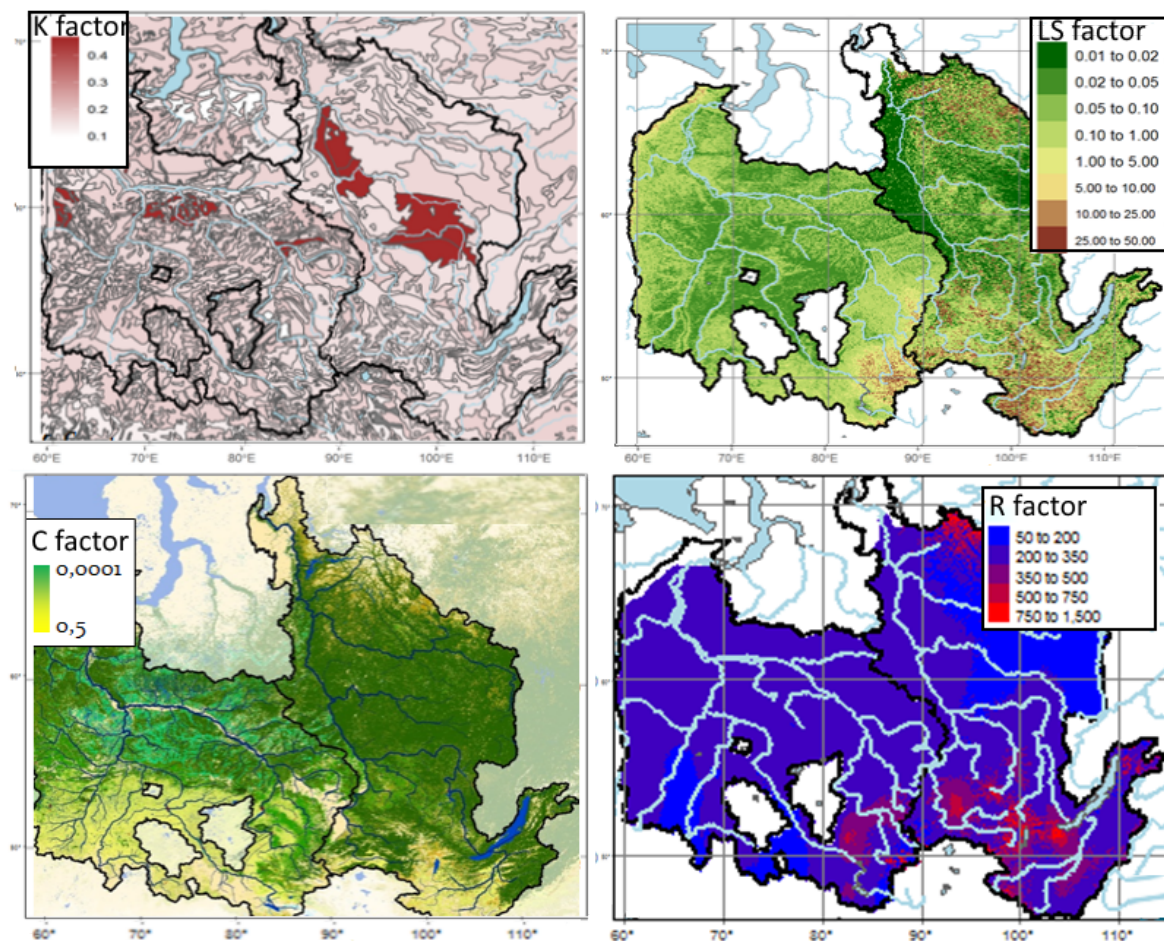
WATERSHED EROSION CALCULATION

Watershed erosion or soil loss were esteemed with the nowadays popular method of (R)USLE- spatially distributed models, which looks like multiplication of 4 main paraments (R, K, LS, C), influencers of soil loss, for each cell. The sources for these paraments calculation mentioned in the table below. The adaptation of this simulation for boreal watershed was made by the land cover (C factor) value from the literature overview (Panagos et al., 2015), (Morgan,2005), (Fernandez et al..2003).

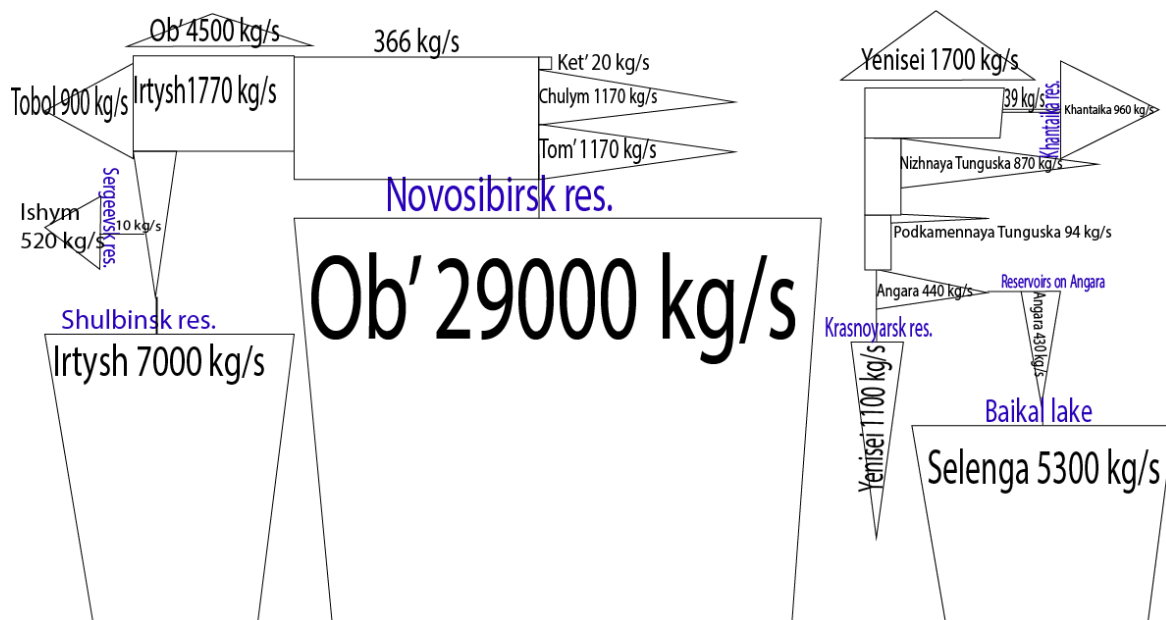
$$A = R \cdot K \cdot LS \cdot C$$

Factor	Issue	Resol.	Formula
R - Rainfall erosivity	Rainfall erosivity map (Panagos et al., 2017)	30 sec.	$R = \frac{(\sum_{i=1}^n (\sum_{r=1}^k (e_r \cdot \vartheta_r) I_{30}))}{n}$ (Morgan, Nearing, 2011)
K - Soil erodibility factor	Soil map FAO (IUSS Working Group WRB, 2015)	30 sec.	$K = f_{csand} \times f_{cl-si} \times f_{orgc} \times f_{hisand}$ (Sharpley, Williams, 1990)
LS - Slope length (L) and steepness (S) factor	IIMP GMETED 2010 (Danielson, Gesch, 2011)	30 sec.	$LS = (m + 1) \left(\frac{U}{L_0} \right)^m \left(\frac{\sin \beta}{S_0} \right)^n$ (Borrelli et al., 2017)
C - Cover and management factor	GlobCover 2009 Landcover map (Bontemps et al., 2011)	250 m	Empirical coefficients for each vegetation zones (Panagos et al., 2015) (Morgan, Nearing, 2011)

Mapping of RUSLE components:

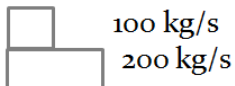


The fact is that upstream of rivers there are the reservoirs that trap all main sources' large watershed erosion. In other words, more than 70% percents of total eroded material are not potentially accessible to be detected downstream for both rivers because of absence and depositing in reservoirs. It can be illustrated in the figure below. This figure represents the number of sediments which is eroded in each watershed, so its shape suggests that the quantity of matter is growing from upstream to downstream. Furthermore, there are reservoirs in catchments that trap the most part of potential watershed erosion.



Scale:

Mean annual erosion:



CALL FOR COLLABORATION AND DISCUSSION



**I want your RIVER BASIN
for SEDIMENT BUDGET
calculation**

viktoro.1998@yandex.ru

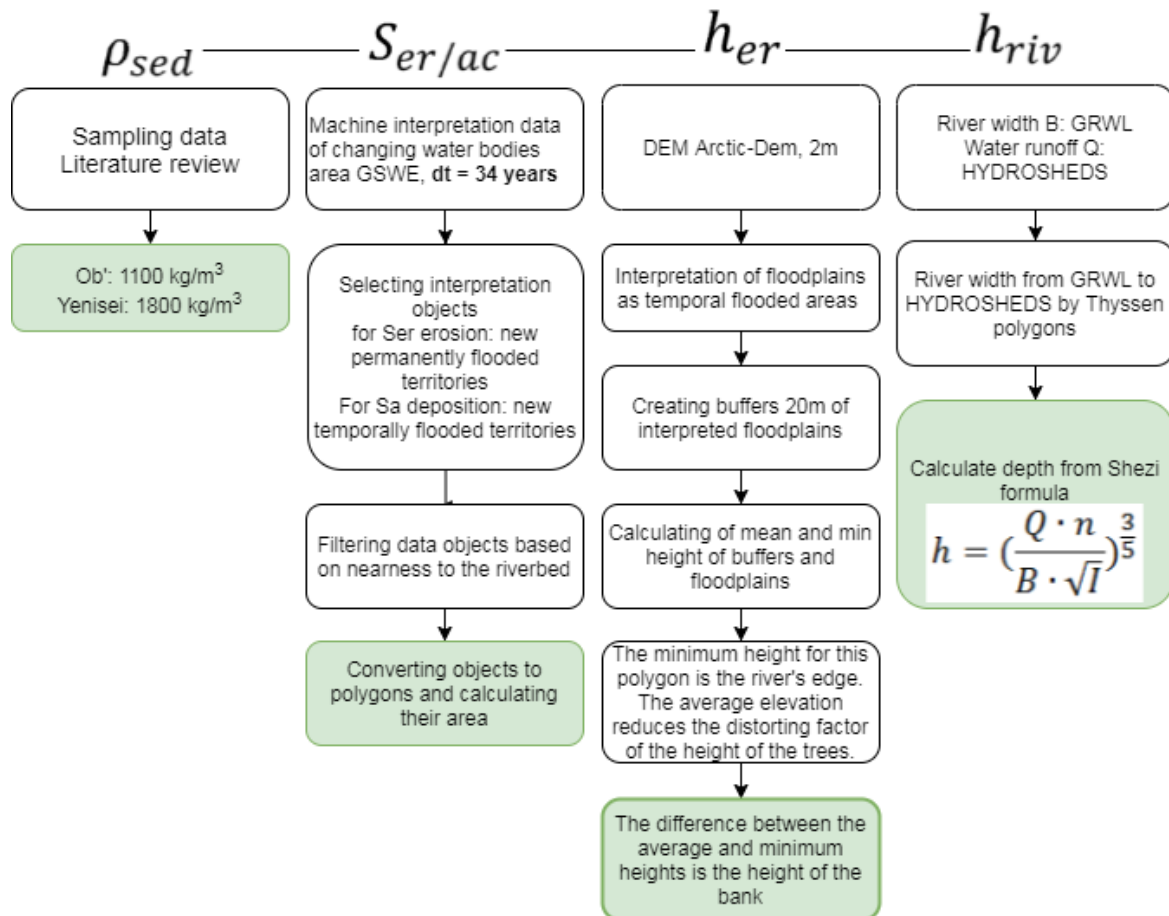
This work is about methods of sediment yield sources calculations for the Ob' and the Yenisei, but if you have ideas of implementing these

calculations for other basins I am full of interest for collaboration!

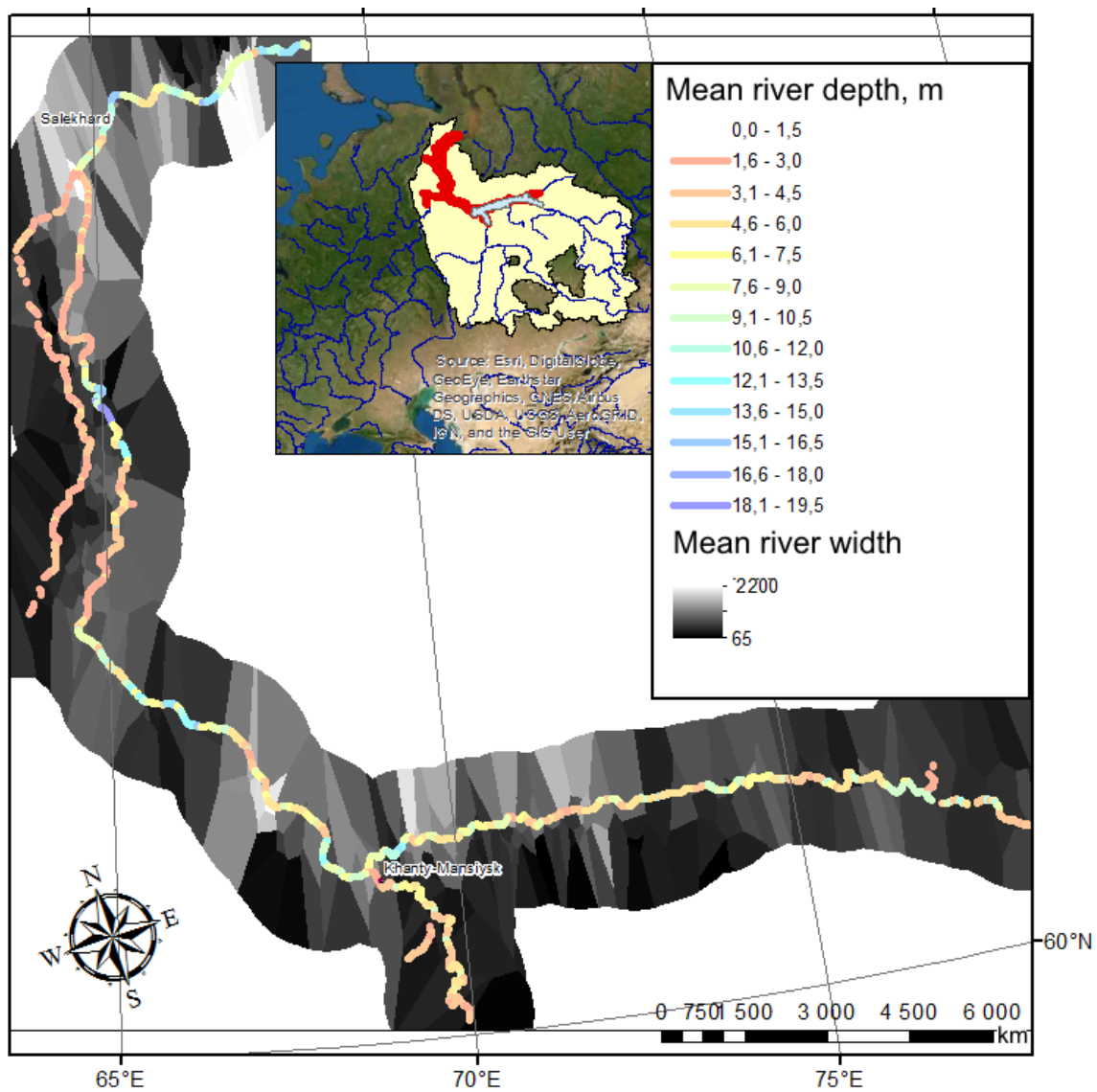
[VIDEO] <https://www.youtube.com/embed/o42R1E5L6Ig?rel=0&fs=1&modestbranding=1&rel=0&showinfo=0>

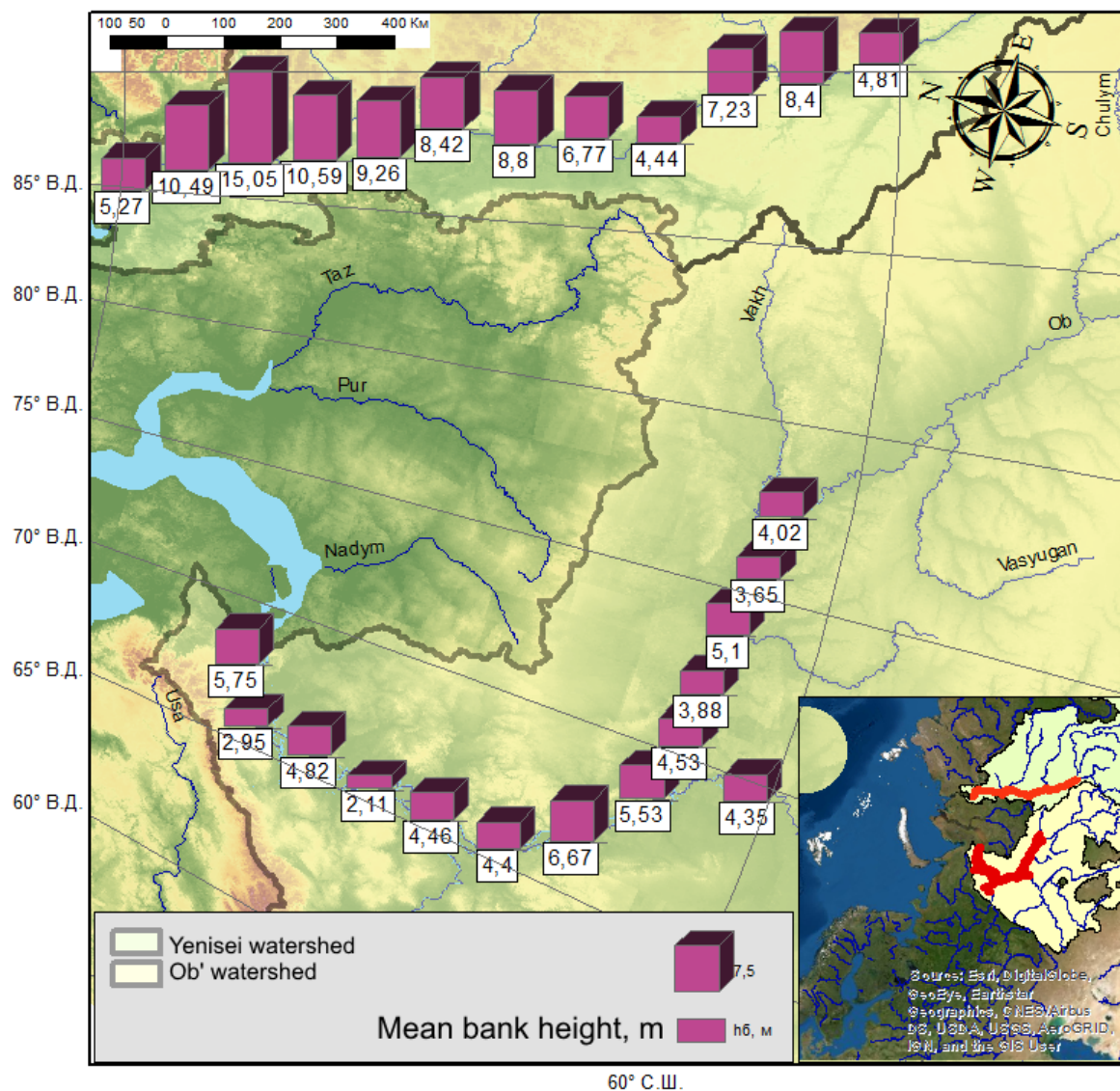
BANK EROSION CALCULATION

The role of bank erosion for big rivers is massive, especially it grows for the river with big dams upstream. Esteems of sediment budget for the Ob' and the Yenisei obligatory need to include the block of channel/bank erosion. New DEMs with high resolution for height (~2m) with multi-time satellite image data Landsat allow solving this task on a global scale. The algorithm of these calculations is illustrated below.

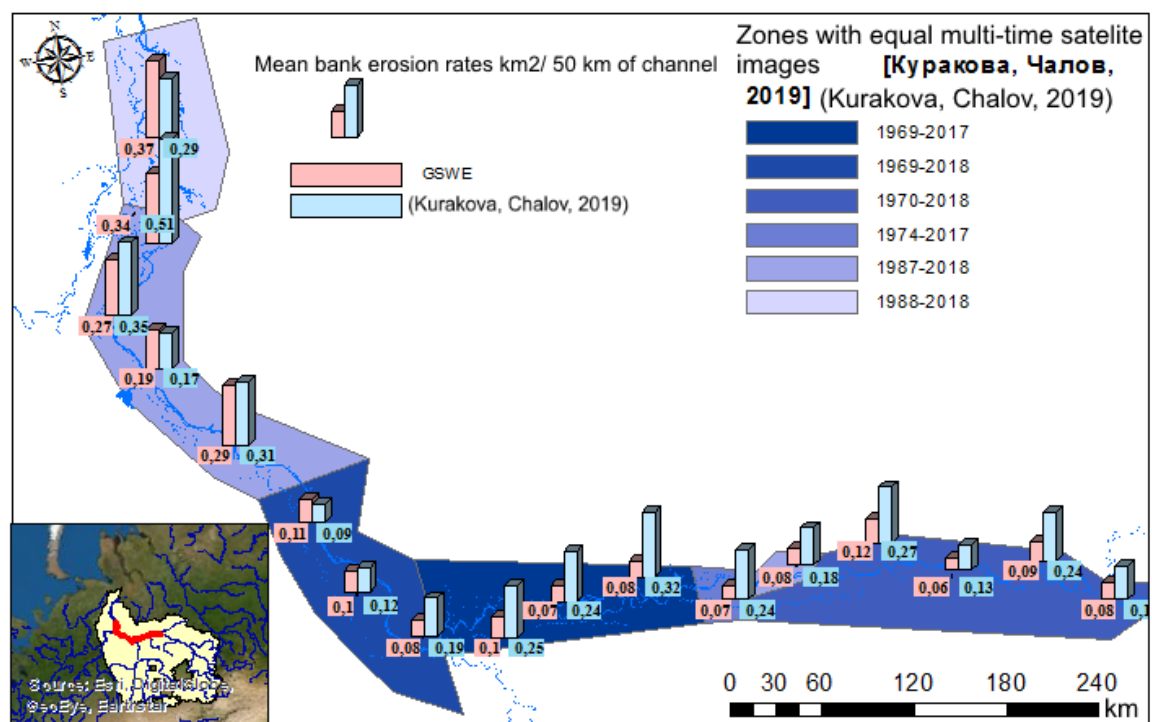


The calculations look like a search of the volume of eroded by rivers polygons with height consisted of mean river depth and mean bank height. These values visualized below

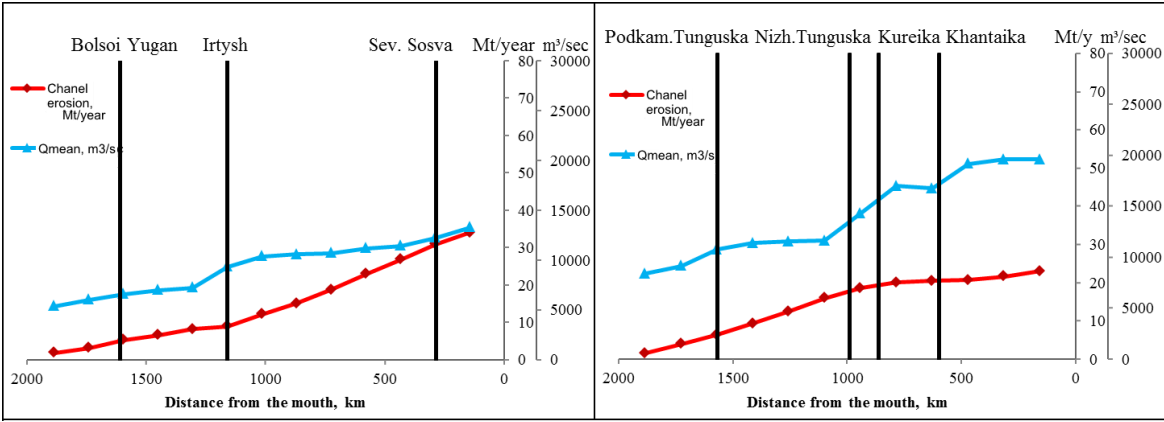




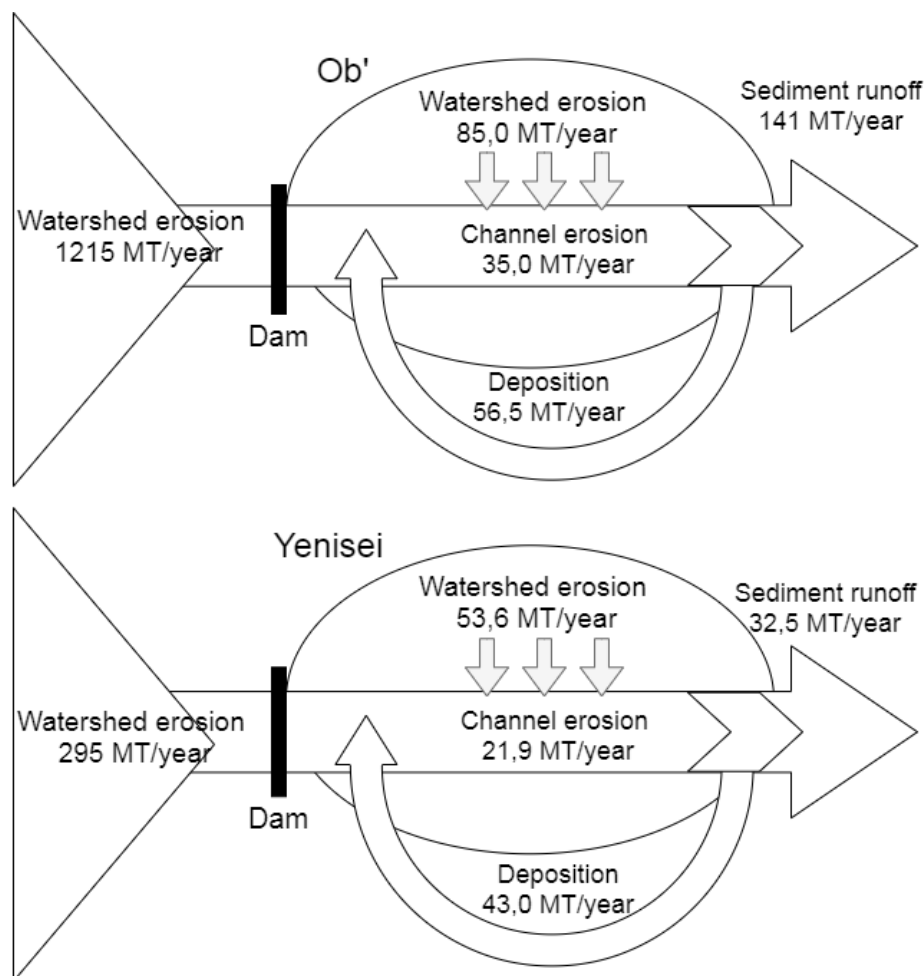
The source for bank erosion areas was the GWSE database that specializes in the water bodies traditions search by Landsat data. The areas of the absence of water near the current channel can be identified as channel erosion areas. This theory was validated with the manual search of channel erosion areas from (Kurakova, Chalov, 2019) and appears a good correlation between GSWE and (Kurakova, Chalov, 2019) data. The difference between areas at least 11%.



The result of watershed erosion can be visualized as line figures, where lines are summarised values of total channel erosion. With black lines bolded the intersection of main rivers with the biggest tributaries. These places confirm the slowing of erosion rates due to the slowing of mean river velocity and the incoming of new material from tributary catchments, most clear it is for the intersection of the Ob' and the Irtysh.



RESULTS



1. Based on the use of modern databases and DEM with a resolution of 250 m, the watershed component of sediment runoff was esteemed by RUSLE, taking into account the trapping of sediment runoff by reservoirs and lakes. For the Ob catchment area, potential soil loss is estimated as 142 MT/year (11% of the total catchment erosion), for the Yenisei 53.6 MT/year (17%)
2. The calculation of bank erosion was esteemed based on automatic interpretation data: GSWE, Arctic-DEM, HYDROATLAS, and GRWL for the downstream. It was 35.0 MT/year for the Ob and 21.9 MT/year for the Yenisei, which was 20% and 29% for rivers of the full erosion in the studied areas
3. The samplings made it possible to obtain characteristic models of the distribution of suspended sediments downstream of the Yenisei and the Ob' according to the developed methodology for estimating the instantaneous flow of sediments in the cross-section based on the program created by the author for extrapolating ADCP measurement data (R language), as well as by Roshydromet net data. The average annual sediment runoff for the Ob' was 63.5 MT/year, for the Yenisei – 32.5 MT/year (by MSU measurements); for the Ob' 16.4 MT/year, for the Yenisei – 2.38 MT/year for Roshydromet;
4. Based on the assessment of the average annual sediment discharge, the deposition of sediment in the basins of these rivers was esteemed. For the Ob', it was 85.5 MT/year (67,8% of the expenditure components), for the Yenisei 43 M/year (57%), and the sediment delivery coefficients were 0,43 and 0,56, respectively for MSU data for not trapped by reservoirs area.

This information can be also presented as the tables:

Sediment budget								
MT/year	Erosion			Sediment runoff	Σ Deposition		SDR	
	Channel	Watershed			Not trapped	Total	Not Trapped	Total
		Not trapped	Total (100%)					
Ob'	35	142 (11%)	1250	63,5	85,5	11186	0,44	0,05
Yenisei	21,9	53,6 (17%)	315	32,5	43,0	304	0,43	0,10

Sediment budget								
%	Erosion, % of full erosion				Sediment runoff, % full erosion		Deposition, % full erosion	
	Channel for not trapped area	Channel from total	Watershed		Not trapped	Total	Not trapped	Total
			Not trapped	Total				
Ob'	20%	2,7%	80%	97,3%	32,2%	5,0%	67,8%	95,0%
Yenisei	29%	6,5%	53,6	93,5%	43,0%	9,6%	57%	90,4%

AUTHOR INFORMATION

Victor Ivanov, master student of 1st year at Moscow State University in Hydrology.

mail: viktoro.1998@yandex.ru

Twitter: https://twitter.com/Hydr_V (https://twitter.com/Hydr_V)

Behance: <https://www.behance.net/ilovv> (<https://www.behance.net/ilovv>)

Indeed: <https://my.indeed.com/p/victori-bl7v113> (<https://my.indeed.com/p/victori-bl7v113>)

hh.ru: <https://hh.ru/applicant/resumes/view?resume=3a3bbe1ff087ad2380039ed1f65664b385971>
(<https://hh.ru/applicant/resumes/view?resume=3a3bbe1ff087ad2380039ed1f65664b385971>)

Sergey Chalov, Ph.D., assistant professor at Moscow State University in the Hydrology department.

mail: hydroserg@mail.ru

ABSTRACT

Introduction:

Nowadays it is nebulous how much matter is delivered by the largest rivers into the Arctic ocean and how much of sediments are eroded by bank and watershed erosion. Thus, these investigations were made for two biggest watersheds of the Arctic Ocean (the Ob' and Yenisei) and their components of sediment budget estimated.

Methods and results:

1. The fieldwork campaign allowed us to obtain characteristic models of the distribution of suspended and bed sediments in the estuaries of the Yenisei and Ob' river
2. The method for estimating the instantaneous sediment yield is developed based on the author's program for extrapolating ADCP measurement data (language R), water velocity and backscatter intensity. The average annual sediment runoff for the Ob' is 63.5 Mt/year, for the Yenisei – 32.5 MT/year;
3. The watershed component of sediment runoff was estimated by the RUSLE, taking into account the trapping of sediments by reservoirs and lakes. For the Ob' potential watershed is 85 MT/year, and 53.6 MT/year for the Yenisei
4. The Bank erosion was calculated based on GSWE, Arctic-DEM, and HYDROATLAS and GRWL databases for the downstream of rivers, which was 35.0 MT/year for the Ob and 21.9 MT/year for the Yenisei.
5. The total deposition of sediments was calculated as a difference between total sediment yield and total erosion in catchments. For the Ob' total deposition was 56.5 MT/year, for the Yenisei is 43 MT/year.

Discussion and conclusion

The sediments deposited in the catchment area or in the bedforms can be eroded again by of snowmelt and rainfall erosion in the catchment area or directly due to the erosion of the banks. The products of erosion gradually move to the end of the river, with the exception of the part of sediment that trapped by reservoirs. For instance, for the Ob', it is only 10% of the watershed erosion, and for the Yenisei, it is 17% of eroded soil on the catchment. According to the calculations, bank erosion for both downstream is less than the watershed component of sediment runoff. The fact that these components are comparable and it gives some progress in solving the still unexplored question of the role of the bank and watershed components in the origin of sediment runoff of large rivers.

Acknowledgments

This work powered by the grant №18-05-60219 of Russian Foundation for Basic Research(RFBR)

REFERENCES

1. Abdelhaleem F.S. и др. Adaption of a formula for simulating bedload transport in the Nile River, Egypt // J. Soils Sediments. 2020.
2. Aleixo R. и др. Applying ADCPs for Long-Term Monitoring of SSC in Rivers // Water Resour. Res. 2020.
3. Allen G.H., Pavelsky T. Global extent of rivers and streams // Science (80-.). 2018.
4. Benavidez R. и др. A review of the (Revised) Universal Soil Loss Equation ((R)USLE): With a view to increasing its global applicability and improving soil loss estimates // Hydrol. Earth Syst. Sci. 2018.
5. Bontemps S. и др. GLOBCOVER 2009 Products Description and Validation Report // ESA Bull. 2011.
6. Borrelli P. и др. An assessment of the global impact of 21st century land use change on soil erosion // Nat. Commun. 2017.
7. Bouchez J. и др. Grain size control of river suspended sediment geochemistry: Clues from Amazon River depth profiles // Geochemistry, Geophys. Geosystems. 2011.
8. Bronick C.J., Lal R. Soil structure and management: A review // Geoderma. 2005.
9. Church M., Biron P.M., Roy A.G. Gravel-Bed Rivers: Processes, Tools, Environments. , 2012.
10. Conrad O. и др. System for Automated Geoscientific Analyses (SAGA) v. 2.1.4 // Geosci. Model Dev. 2015.
11. Deines K.L. Backscatter estimation using broadband acoustic Doppler current profilers // Proc. IEEE Work. Conf. Curr. Meas. 1999.
12. Desmet P.J.J., Govers G. A GIS procedure for automatically calculating the USLE LS factor on topographically complex landscape units // J. Soil Water Conserv. 1996.
13. Dotterweich M. The history of human-induced soil erosion: Geomorphic legacies, early descriptions and research, and the development of soil conservation-A global synopsis // Geomorphology. 2013.
14. Elçi Ş., Aydın R., Work P.A. Estimation of suspended sediment concentration in rivers using acoustic methods // Environ. Monit. Assess. 2009.
15. FAO. Guidelines for Soil Description // Disease Management & Health Outcomes; Guidelines for Soil Description. , 2006.
16. Hijmans R.J. и др. Very high resolution interpolated climate surfaces for global land areas // Int. J. Climatol. 2005.
17. Hydar A., Thamer A.M., Badronnisa Y. Testing the accuracy of sediment transport equations using field data // Malaysian J. Civ. Eng. 2016. T. 28. № 1. C. 50–64.
18. IUSS Working Group WRB. World Reference Base for Soil Resources 2014, update 2015. International soil classification system for naming soils and creating legends for soil maps. , 2015.
19. Julien P.Y. Erosion and sedimentation // Eros. Sediment. 1995.
20. Kinnell P.I.A. Why the universal soil loss equation and the revised version of it do not predict event erosion well // Hydrol. Process. 2005.
21. Li W. и др. Estimating instantaneous concentration of suspended sediment using acoustic backscatter from an ADV // Int. J. Sediment Res. 2019. T. 34. № 5. C. 422–431.
22. Linke S. и др. Global hydro-environmental sub-basin and river reach characteristics at high spatial resolution // Sci. data. 2019.
23. Los S.O. и др. Vegetation height and cover fraction between 60° S and 60° N from ICESat GLAS data // Geosci. Model Dev. 2012.
24. Matisoff G., Whiting P.J. Measuring Soil Erosion Rates Using Natural (7Be, 210Pb) and Anthropogenic (137Cs, 239,240Pu) Radionuclides // Advances in Isotope Geochemistry. , 2012.
25. Morgan R.P.C., Nearing M.A. Handbook of Erosion Modelling. , 2011.

26. Morin P. и др. ArcticDEM; A Publically Available, High Resolution Elevation Model of the Arctic. , 2016.
27. Panagos P. и др. Estimating the soil erosion cover-management factor at the European scale // Land use policy. 2015.
28. Panagos P. и др. Global rainfall erosivity assessment based on high-temporal resolution rainfall records // Sci. Rep. 2017.
29. Panagos P., Borrelli P., Meusburger K. A new European slope length and steepness factor (LS-factor) for modeling soil erosion by water // Geosci. 2015.
30. Park H.B., Lee G. hong. Evaluation of ADCP backscatter inversion to suspended sediment concentration in estuarine environments // Ocean Sci. J. 2016.
31. Pekel J.F. и др. High-resolution mapping of global surface water and its long-term changes // Nature. 2016.
32. Pomázi F., Baranya S. Comparative assessment of fluvial suspended sediment concentration analysis methods // Water (Switzerland). 2020.
33. Renard K.G. и др. Predicting soil erosion by water: a guide to conservation planning with the Revised Universal Soil Loss Equation (RUSLE) // Agric. Handb. No. 703. 1997. С. 404.
34. Rouse H.B. Modern conceptions of the mechanics of fluid turbulence // Trans. ASCE. 1937. Т. 102. С. 463–543.
35. Sakho I. и др. Suspended sediment flux at the Rhone River mouth (France) based on ADCP measurements during flood events // Environ. Monit. Assess. 2019.
36. Santos Loureiro N. De, Azevedo Coutinho M. De. A new procedure to estimate the RUSLE EI30index, based on monthly rainfall data and applied to the Algarve region, Portugal // J. Hydrol. 2001.
37. Sharpley A.N., Williams J.R. Erosion Productivity Impact Calculator: 1. Model Documentation (EPIC) // Tech. Bull. State Dep. Agric. 1990.
38. Simard M. и др. Mapping forest canopy height globally with spaceborne lidar // J. Geophys. Res. Biogeosciences. 2011.
39. Wischmeier W., Smith D. Predicting rainfall erosion losses: a guide to conservation planning. , 1978.
40. Wong M., Parker G. Reanalysis and correction of bed-load relation of Meyer-Peter and Müller using their own database // J. Hydraul. Eng. 2006.
41. Xu J. и др. PEATMAP: Refining estimates of global peatland distribution based on a meta-analysis // Catena. 2018.
42. Алексеевский Н.И. Формирование и движение речных наносов. Москва: Московский государственный университет, 1998. 202 с.
43. Архипов С.А. и др. Западно-Сибирская равнина / под ред. В.. Николаев. Москва: Наука, 1970. 283 с.
44. Бабкин В.. Речной сток и циклоническая деятельность в бассейнах Оби, Енисея, Лены. : Москва, Научный мир, 2017.
45. Балакай Г.Т. и др. Мелиоративные компенсационные мероприятия, снижающие поверхностный сток талых, дождевых и ирригационных вод с земель сельскохозяйственного назначения. Новочеркасск: , 2014. 82 с.
46. Барышников Н.Б., Плоткина Н.П., Рублевская Р.М. Коэффициенты шероховатости речных русел // Динамика русловых потоков и охрана природных вод, сборник научных трудов (межвузовский) / под ред. Н.Б. Барышников. Ленинград: изд. ЛГМИ, 1990. С. 163.
47. Беркович К.М., Злотина Л.В., Турыкин Л.А. ЕСТЕСТВЕННЫЕ И АНТРОПОГЕННЫЕ НАПРАВЛЕННЫЕ ВЕРТИКАЛЬНЫЕ ДЕФОРМАЦИИ РУСЕЛ РЕК, «Геоморфология» // Geomorphol. RAS. 2017.
48. Ботвинков В.М. и др. Гидроэкологические проблемы русла р. Оби в нижнем бьефе Новосибирской ГЭС // Эрозионные и русловые процессы. 2005. Т. 4. С. 90–103.
49. Великанов М.А. Динамика русловых потоков. : М.: Гостехиздат, 1954. 323 с.
50. Вольнов В.В., Бойко А.В., Чичкарев А.С. Опыт использования противозрозионных гидротехнических сооружений в борьбе со стоком талых вод и смывом пахотных почв на склоновых землях Алтайского края // Вестник Алтайского государственного аграрного университета. 2017.
51. Втюрин Б.И. Подземные льды СССР. Москва: Наука, 1975. 214 с.

52. Голубев И. Исследование водной эрозии почв в зоне равнинной лесостепи Красноярского края // Вестник Красноярского государственного аграрного университета. 2009.
53. Гришанин К.В. Теория руслового процесса. : Изд-во «Транспорт», 1972. 216 с.
54. Гусаров А.В. Тенденции изменения эрозии и стока взвешенных наносов на Земле во второй половине XX столетия // 2005. С. 31.
55. Заславский М.Н. Эрозиоведение. Москва: , 1983. Вып. Высшая шко. 320 с.
56. Караушев А.В. Теория и методы расчета речных наносов / под ред. Гидрометеоздат. Ленинград: , 1977. 271 с.
57. Качинский Н.А. Физика почв. : М.:Высшая школа, 1965. 323 с.
58. Куракова А.А., Чалов Р.С. РАЗМЫВЫ БЕРЕГОВ НА ШИРОТНОМ УЧАСТКЕ СРЕДНЕЙ ОБИ И ИХ СВЯЗЬ С МОРФОЛОГИЕЙ РУСЛА // Географический вестник. 2019. С. 34–47.
59. Ларионов Г.А. Эрозия и дефляция почв: основные закономерности и количественные оценки // 1993.
60. Ларионов Г.А., Краснов С.. Гидрофизическая модель эрозии и возможности ее реализации // Экологические проблемы эрозии почв и русловых процессов. 1992. № М.: Изд-во МГУ. С. 5–15.
61. Лисецкий Ф.Н., Светличный А.А., Черный С.Г. Современные проблемы эрозиоведения // 2012. С. 456.
62. Литвин Л.Ф. ЭРОЗИИ ПОЧВ СЕЛЬСКОХОЗЯЙСТВЕННЫХ ЗЕМЕЛЬ РОССИИ. : АКАДЕМКНИГА, 2002. 255 с.
63. Магрицкий Д.В. Годовой сток взвешенных наносов российских рек водосбора северного Ледовитого океана и его антропогенные изменения // Вестник Московского университета. Серия 5. География. 2010. С. 17–24.
64. Магрицкий Д.В., Повалишникова Е.С., Фролова Н.Л. История изучения стока воды и водного режима рек Арктической зоны России в XX в. и начале XXI в. // Арктика и Антарктика. 2019.
65. Маккавеев Н.И. Русло реки и эрозия в ее бассейне. , 1955.
66. Новиков В.Н., Юдин Д.Ю. Оценка роли морского волнения в формировании морского края дельты Печоры // Динамика и термика рек, водохранилищ и окраинных морей. 1989. Т. 1. № М.: С. 328–330.
67. Окорков В.В. ГРАНУЛОМЕТРИЧЕСКИЙ СОСТАВ ПОЧВ И ЕГО РОЛЬ В УСТОЙЧИВОСТИ К ВОДНОЙ ЭРОЗИИ // Владимирский земледелец. 2010. Т. 3(53).
68. Попова Н., Цыцкин Р. Кайнозой Нижнего Приангарья. Геология и полезные ископаемые. : СФУ, 2010.
69. Славина Т.П., Пашнева Г.Е., Кахаткина М.. Почвы поймы Средней Оби, их мелиоративное состояние и агрохимическая характеристика / под ред. М.Г. Танзыбаев. Томск: , 1981. Вып. ГТУ. 227 с.
70. Тананаев Н.И., Тейссеренк Р.Э., Ле Дантек Т.О. Годовой сток взвешенных наносов реки Енисей // ИЗВЕСТИЯ РАН. СЕРИЯ ГЕОГРАФИЧЕСКАЯ. 2019. Т. 6. С. 68–72.
71. Танащенко А.А. и др. Условия и интенсивность эрозионно-аккумулятивных процессов в лесостепи Предсалаирья // Почвоведение. 2013.
72. Чалов Р.С., Евстигнеев В.М., Зайцев А.А. Русловый режим рек Северной Евразии (в пределах бывшего СССР) / под ред. Р.С. Чалов. Москва: , 1994. Вып. М. : Геогр. 335 с.
73. Чалов С.Р. и др. Проблемы гидрологического мониторинга в бассейнах трансграничных рек Восточной Европы (на примере Западной Двины) // Инженерные изыскания. 2019. Т. 13. № Геомаркетинг. С. 32–44.
74. Шаутидзе О.Д., Носелидзе Д.В., Момцемлидзе Ш.А. ЭКСПЕРИМЕНТАЛЬНЫЕ ИССЛЕДОВАНИЯ РАСПРЕДЕЛЕНИЯ ПРОДОЛЬНОЙ СОСТАВЛЯЮЩЕЙ СКОРОСТЕЙ ТЕЧЕНИЯ ПО ГЛУБИНЕ ПОТОКА Р. РИОНИ // Географический вестник. 2010. Т. 1. С. 78–84.
75. Шепелев А.И. Аллювиальное почвообразование в поймах рек таежной зоны Западной Сибири: На примере поймы Средней Оби // 1999.
76. Шмакова М.Н. Сравнительный анализ формул общего расхода наносов на примере рек США // Научно-технический вестник Брянского государственного университета. 2015.

77. Шынбергенов Е.А. КАРТОГРАФО-ГЕОИНФОРМАЦИОННЫЙ АНАЛИЗ БАССЕЙНОВЫХ ГЕОСИСТЕМ МАЛЫХ РЕК ВОДОСБОРА РЕКИ ЛЕНЫ // 2018.
78. Якутина О.П., Нечаева Т.В., Смирнова Н.В. Изменение плодородия оподзоленного чернозема в результате водной эрозии на юге западной Сибири // Плодородие. 2014. Т. 1.
79. Янченко А.Н., Романов А.А., Герасименко В.Я. ГЕОДИНАМИЧЕСКИЕ ПРОЦЕССЫ, МОРФОЛОГИЯ, ЛАНДШАФТ И ОСОБЕННОСТИ ВЫСОТНОЙ ПОЯСНОСТИ ГОР ПУТОРАНА // ГОРНЫЙ ИНФОРМАЦИОННО-АНАЛИТИЧЕСКИЙ БЮЛЛЕТЕНЬ (НАУЧНО-ТЕХНИЧЕСКИЙ ЖУРНАЛ). 2010. Т. 6. С. 355–365.
80. Расчеты потерь почвы / под ред. М. Дж.К., Бубензер Г.Д. : М.: Колос, 1984. 512 с.
81. Русловые процессы и водные пути рек Обского бассейна / под ред. Р.С. Чалов, Е.М. Плескевич, В.А. Баулы. Новосибирск: РИПЭЛ плюс Новосибирск, 2001. 300 с.
82. Геоэкологическое состояние Арктического побережья России и безопасность природопользования. Москва: , 2007. Вып. ГЕОС. 585 с.
83. Энциклопедия Красноярского края / под ред. Л.Н. Ермолаева. , 2008.
84. Методические указания по определению опасного уровня водной и ветровой эрозии. Россия, Новочеркасск: ФГБНУ «РосНИИПМ», 2015.
85. Эрозионно-русловые системы : монография / под ред. Р.С. Чалов, А.Ю. Сидорчук, В.Н. Голосов. Москва: М. : ИНФРА, 2017. 698 с.