

On Energy Cascades in General Flows

Q Jamet, A Ajayi, J Le Sommer, T Penduff

Laboratoire de Glaciologie et Geophysique de l'Environnement, CNRS, Grenoble, France

A Hogg

*Research School of Earth Sciences and ARC Centre of Excellence for Climate Extremes, Australian
National University, Canberra, AU*

WK Dewar*

*Laboratoire de Glaciologie et Geophysique de l'Environnement, CNRS, Grenoble, France and Dept. of
EOAS, Florida State University, Tallahassee, FL, 32306*

Abstract

An important characteristic of geophysically turbulent flows is the transfer of energy between scales. It is expected that balanced flows pass energy from smaller to larger scales as part of the well-known upscale cascade while submesoscale and smaller scale flows can transfer energy eventually to smaller, dissipative scales. Much effort has been put into quantifying these transfers, but a complicating factor in realistic settings is that the underlying flows are often strongly spatially heterogeneous and anisotropic. Furthermore, the flows may be embedded in irregularly shaped domains that can be multiply connected. As a result, straightforward approaches like computing Fourier spatial spectra of nonlinear terms suffer from a number of conceptual issues. In this paper, we endeavor to compute cross-scale energy transfers in general settings, allowing for arbitrary flow structure, anisotropy and inhomogeneity. We employ a Green's function approach to the kinetic energy equation to relate kinetic energy at a point to its Lagrangian history. A spatial filtering of the resulting equation naturally decomposes kinetic energy into length scale dependent contributions and describes how the transfer of energy between those scales takes place. The method is applied to a numerical simulation of vortex merger, resulting in the demonstration of the expected upscale energy cascade. Somewhat novel results are that the energy transfers are dominated by pressure work, rather than kinetic energy exchange, and dissipation is a noticeable influence on the larger scale energy budgets.

Keywords: energy transfers, energetics, balanced flow dynamics

1. Introduction

A surprising aspect of nonlinear geophysical flows; namely, that they transfer energy from smaller to larger scales and thus in a sense opposite to that of three-dimensional, isotropic

*Corresponding author

Email address: wdewar@fsu.edu (WK Dewar)

turbulence, has been known for some time (Fjortoft (1953), Kraichnan (1967), Charney (1971)). The reason for this behavior has been traced to the quasi-two dimensionality of so-called ‘balanced’ dynamics, which strongly constrains vortex tube stretching. Scott and Wang (2005) argue for the observation of an upscale cascade in the ocean from analysis of satellite sea surface height measurements and Scott and Arbic (2007) argue for the same in numerical models. Others have argued that this behavior in wavenumber space is accompanied by a transfer in the frequency domain to lower frequencies (Arbic et al. (2012)) and extensions to the combined wavenumber frequency domain have also been found (Arbic et al. (2014)).

The presence of an upscale cascade has many implications of practical significance to the functioning of the ocean. For example, the upscale cascade is due to nonlinearities in the governing equations and the transfer from high frequency mesoscale variability to low frequencies implicates eddies as a mechanism effecting climate variability (Holland (1978), Berloff and McWilliams (1999), and Dijkstra and Molemaker (1999)). Further, the large scale circulation receives energy from the large scale and slowly evolving winds (Wunsch and Ferrari (2004), Ferrari and Wunsch (2009)) and it is generally thought this energy is shunted to the mesoscale by geostrophic instabilities. An equilibrated ocean must then find a pathway for the mesoscale to lose its energy, and the so-called upscale cascade presents a hindrance. The return of energy to larger scales moves it to scales where dissipation is vanishingly weak, and this has led to considerable recent interest in the question of mesoscale energy loss.

Given that cross scale energy exchange in the ocean is central to ocean and climate dynamics, it is important to examine how those transfers can be measured. Most energy exchange diagnoses of both observations and models have proceeded through the use of Fourier transforms (Arbic et al. (2014)), which requires that the data be converted into forms consistent with the approach. Speaking primarily about spatial analyses, geographically confined regions of interest are usually defined. Since the data are not spatially periodic, as assumed by Fourier methods, tapering, or windowing, is usually applied. The subsequent analysis then occurs on the windowed domain, and the results are in some sense representative of an averaged statement of the transfers in the domain. Another complicating factor is that irregularities can appear inside the domain. An example is Bermuda, sitting in the open Atlantic at a location near to the Gulf Stream and the separated North Atlantic jet. Methods, often subjective, are required to handle such areas, frequently involving an interpolation over the problematic regions. Nonetheless, these analyses have usually yielded answers consistent with our theoretical expectations. They do represent spatial averages however, and further understanding of inhomogeneous regions, like the Kuroshio and the Gulf Stream, require more spatial resolution. This served in part as motivation for Aluie et al. (2018) who examined energy exchanges locally based on a purely spatial filtering approach.

The focus of this paper is to propose a new method of analyzing kinetic energy in models and observations that appears to avoid many of the above mentioned issues with Fourier methods. It also differs from previous approaches in several ways, primarily in focussing on a Lagrangian-like approach and working directly with the kinetic energy equation. We apply the technique to primitive equation model output describing vortex merger, and hence an upscale cascade. The results indicate an upscale cascade, thus demonstrating the viability of the procedure, even though it is not limited to this restrictive setting. The theoretical basis

for the procedure is outlined in the next section, the model description and applications appear in the following section. We discuss and summarize the paper in the concluding section, emphasizing new results specific to the energetics of the upscale cascade and outline thoughts for further work. Methods to handle domain irregularities are outlined in Appendix A. An Eulerian version of the present analysis appears in Appendix B. Derivation of comparable formulas for potential energy are discussed in Appendix C and modifications to the analysis introduced when using isopycnal coordinates are outlined in Appendix D.

2. An Analysis of the Kinetic Energy Equation

2.1. Overview

Below we present an analysis of the kinetic energy equation. In brief, our plan is to apply a Green's function analysis to the kinetic energy equation. The result relates the final kinetic energy of a parcel to its initial kinetic energy and its history along its (quasi-) Lagrangian trajectory. We then filter this equation in physical space to obtain a statement about a length scale based decomposition of the final kinetic energy. Similar filterings of the initial kinetic energy and kinetic energy sources then yield statements about cross-scale energy transfers. Finally, we average the point-wise kinetic energy decomposition to obtain a more representative view of the cross-scale transfers. These steps are spelled out in sequence in the following subsections. The reader wishing to skip mathematical detail can go directly to equations (35) - (37), where the results are summarized.

We begin with the hydrostatic equations in Cartesian coordinates, the zonal momentum component of which is

$$u_t + uu_x + vu_y + wu_z - fv = -p_x + \nu(u_{xx} + u_{yy} + u_{zz}) \quad (1)$$

where u is zonal velocity, subscripts x , y , z , and t denote partial derivatives with respect to zonal, meridional and vertical location and time, respectively. The quantity p is pressure and ν is viscosity. A partial step to constructing the kinetic energy equation involves multiplying (1) by u , which results in

$$\begin{aligned} (u^2/2)_t + u(u^2/2)_x + v(u^2/2)_y + w(u^2/2)_z - fuv = \\ -up_x + (\nu(uu_x))_x + (\nu(uu_y))_y + (\nu(uu_z))_z - \nu(u_x)^2 - \nu(u_y)^2 - \nu(u_z)^2 \end{aligned} \quad (2)$$

A similar procedure on the meridional momentum equation and adding returns the kinetic energy equation

$$K_t + \nabla \cdot \mathbf{u}K = -\mathbf{u}_h \cdot \nabla_h p - \epsilon + \nabla \cdot \nu \nabla K \quad (3)$$

where $K = u^2/2 + v^2/2$ and $\epsilon = \nu \nabla \mathbf{u} \cdot \nabla \mathbf{u}$ is dissipation. We rewrite this as

$$K_t + \nabla \cdot \mathbf{u}K - \nabla \cdot \nu \nabla K = R \quad (4)$$

where $R = -\mathbf{u}_h \cdot \nabla_h p - \epsilon$ contains the ‘sources’ and ‘sinks’ for kinetic energy. Given that pressure gradients appear in the momentum equations as a force acting on a fluid particle, the quantity $-\mathbf{u}_h \cdot \nabla_h p$ represents movement in the direction of a force. We will thus refer to it as ‘pressure work’. The interpretation of $-\epsilon$ is more obviously simply dissipation of kinetic energy.

Exploiting the hydrostatic balance, pressure work can be rewritten as

$$-\mathbf{u}_h \cdot \nabla_h p = -\nabla \cdot \mathbf{u} p + w b \quad (5)$$

where b is buoyancy. The last quantity in (5) is the exchange between kinetic and potential energy. In this paper we work primarily with pressure work, noting that potential energy exchange is a component of pressure work.

2.2. Kinetic Energy at a Single Point

We now apply a Green's function analysis, which leads eventually to the construction of kinetic energy at a point, and begins by multiplying (4) by some space-time dependent function G .

$$G K_t + G \nabla \cdot \mathbf{u} K - G \nabla \cdot \nu \nabla K = G R \quad (6)$$

Straightforward calculus leads to

$$\begin{aligned} (GK)_t + \nabla \cdot \mathbf{u} G K - \nabla \cdot \nu G \nabla K + \nabla \cdot K \nu \nabla G \\ - K(G_t + \nabla \cdot \mathbf{u} G + \nabla \cdot \nu \nabla G) = R G \end{aligned} \quad (7)$$

Again, appealing to straightforward Green's function methods, we suppose G satisfies

$$G_t + \nabla \cdot \mathbf{u} G = -\nabla \cdot \hat{\nu} \nabla G - \delta(\mathbf{x} - \mathbf{x}_o, t - t_o) \quad (8)$$

where δ is the usual Dirac delta function centered on the so-called 'source points' \mathbf{x}_o, t_o and $\hat{\nu}$ is a viscosity-like quantity. It is not necessarily equal to ν , although in this paper we will always discuss cases where $\hat{\nu} = \nu$. Boundary conditions are required to solve (8). As is typical for Green's functions, the boundary conditions will always be homogeneous, however how they will be distributed between specified values of G and its normal derivatives on the boundary are yet to be determined.

Eq. (8) is almost a simple advection-diffusion equation, differing only because viscosity appears multiplied by -1 , i.e. $-\hat{\nu} < 0$, as opposed to $\hat{\nu} > 0$ occurs on the right hand side. In fact, such a result is standard in Green's function analyses, where the equation solved by G is the adjoint of the equation governing K , and is handled by solving (8) backwards in time. Instead of an initial condition, a 'posterior' condition on G is applied, and integration proceeds to temporally earlier values. For this case, we will always choose a posterior condition of $G(t_f) = 0$. Notationally, $G = G(\mathbf{x}, t; \mathbf{x}_o, t_o)$, expressing the dependence of G on both the 'source' points, \mathbf{x}_o, t_o , and the 'observation' points, \mathbf{x}, t .

Now, we perform an integral of (7) over a volume V of the observation space, \mathbf{x} , and over the time interval 0 to t_o , where $0 < t_o$.

$$\begin{aligned} K(\mathbf{x}_o, t_o) - \int_{\mathbf{x}} G K(\mathbf{x}, 0) d\mathbf{x} + \int_0^{t_o} \int_S (\mathbf{u} G K - \hat{\nu} G \nabla K + \hat{\nu} K \nabla G) \cdot \vec{n} dS dt = \\ \int_0^{t_o} \int_{\mathbf{x}} R G d\mathbf{x} dt + \int_0^{t_o} \int_{\mathbf{x}} G \nabla \cdot (\nu - \hat{\nu}) \nabla K d\mathbf{x} dt \end{aligned} \quad (9)$$

where S is the surface bounding the volume V . At this point, we exploit the available flexibility in boundary conditions. Eq. (9) describes how various kinetic sources contribute

to the final kinetic energy at a point. From a physical perspective, we expect kinetic energy transport across the boundary S can contribute to the final kinetic energy inside S . This can occur by kinetic energy advection and viscous exchange across S . Both of these appear in (9) multiplied by G . We therefore choose to apply $\nabla G \cdot \vec{n} = 0$, i.e. homogenous Neumann boundary conditions, to G , thus eliminating the underlined term from (9) and preserving the aforementioned physical effects. With this, and a rearrangement of terms, we obtain

$$K(\mathbf{x}_o, t_o) = \int_{\mathbf{x}} G(\mathbf{x}, 0; \mathbf{x}_o, t_o) K(\mathbf{x}, 0) d\mathbf{x} + \int_o^{t_o} \int_{\mathbf{x}} \hat{R} G d\mathbf{x} dt \quad (10)$$

where

$$\hat{R} = R + \nabla \cdot (\nu - \hat{\nu}) \nabla K$$

Eq. (10) illustrates how the kinetic energy at location \mathbf{x}_o and time t_o has been constructed. The first term on the right hand side represents the ‘initial’ kinetic energy, $K(\mathbf{x}, 0)$ that ends up at (\mathbf{x}_o, t_o) . The volume defining the impact of this $K(\mathbf{x}, 0)$ contribution depends on the development of G from t_o . The last term involves the internal fluid sources of kinetic energy and how they have contributed to K along the trajectory that eventually ends up at \mathbf{x}_o . Eq. (10) provides a full deconstruction of the kinetic energy in the basin, regardless of spatial inhomogeneities in the flow. If an integration volume over a subdomain of the full basin is considered, the above equation is augmented by advective and diffusive fluxes of kinetic energy across the subdomain boundary, to the extent they are involved as measured by G .

The clearest interpretation of this formula occurs if G , defined in (8), measures purely Lagrangian trajectories, which occurs in the limit $\hat{\nu} = 0$. It is only in the introduction of the parameter $\hat{\nu}$ that the above analysis differs from a classical Green’s function analysis. Indeed, for the remainder of this paper, we will continue with $\hat{\nu} = \nu$ both for simplicity and because our numerical application will employ a very small value for ν . We have also checked that our results are insensitive to $\hat{\nu} < \nu$. It is in the nearly Lagrangian nature of (10) that the present approach somewhat resembles that of Nagai et al. (2015) and Shakespeare and Hogg (2017).

2.3. Cross-scale Contributions to Kinetic Energy

We now compute how energy is transferred between various length scales. These exchanges become more complicated when $K(\mathbf{x}_o, t_o)$ is strongly inhomogeneous and anisotropic, as is typical in the ocean. In this and the next subsections, we will build to a formal statement of cross-scale transfers in several steps, proceeding from a statement valid at a single point to one averaged over a specified volume.

As a first step, consider a ‘filter’ applied to $K(\mathbf{x}_o, t_o)$, i.e.

$$K_L(\mathbf{x}_1, t_o) = \int_{\mathbf{x}_o} K(\mathbf{x}_o, t_o) f_L(\mathbf{x}_o - \mathbf{x}_1) d\mathbf{x}_o \quad (11)$$

where f_L is a filter associated with a length scale, L , and fixed at location \mathbf{x}_1 . What the filter might be is a question deserving discussion, because the filtering will be carried out in physical space. For realistic problems, physical space typically contains a lot of irregularity: examples are complex lateral boundaries and major topography that can extend through

domains at given depths and reach up to the surface. Any useful filter must contend with these features. Guidance about the filters can be obtained from the simplest case of an unbounded domain without interior obstacles. In that case, as we argue below, the obvious choices are trigonometric functions. At a more fundamental level, these work because they are a collection of functions forming a complete set due to their being the eigenfunction, eigenvalue solutions to the Helmholtz equation in an unbounded domain. We argue in Appendix A basis functions constructed from the Helmholtz equation with homogeneous conditions on S , the boundary of the domain V , will for complex domains provide a collection of functions with the desired properties. We stress here, however, that Appendix A is not really exploited in the present paper, but serves as a procedure in need of further examination.

But whatever the filter is, an important point is that the filter works on the ‘source points’ (\mathbf{x}_o) of the Green’s function. Operating on (10), we obtain

$$K_L(\mathbf{x}_1, t_o) = \int_{\mathbf{x}} G_L K(\mathbf{x}, 0) d\mathbf{x} + \int_o^{t_o} \int_{\mathbf{x}} R G_L d\mathbf{x} dt \quad (12)$$

where

$$G_L(\mathbf{x}, t; \mathbf{x}_1, t_o) = \int_{\mathbf{x}_o} G(\mathbf{x}, t; \mathbf{x}_o, t_o) f_L(\mathbf{x}_o - \mathbf{x}_1) d\mathbf{x}_o \quad (13)$$

We can similarly filter (8) to show

$$\frac{\partial}{\partial t} G_L + \nabla \cdot \mathbf{u} G_L = -\nabla \nu \cdot \nabla G_L - f_L(\mathbf{x} - \mathbf{x}_1) \delta(t - t_o) \quad (14)$$

We want the filtering to decompose $K(\mathbf{x}_1, t_o)$ completely into scale dependent information, i.e.

$$\int_{L=0}^{\infty} K_L(\mathbf{x}_1, t_o) dL = K(\mathbf{x}_1, t_o) \quad (15)$$

Employing (11) in (15), it is simple to show

$$\int_{L=0}^{\infty} f_L(\mathbf{x}_o - \mathbf{x}_1) dL = \delta(\mathbf{x}_o - \mathbf{x}_1) \quad (16)$$

where δ is the Dirac delta function¹. A classic result from the theory of generalized functions is

$$\int_{-\infty}^{\infty} e^{-2\pi \mathbf{k} \cdot (\mathbf{x}_o - \mathbf{x}_1)} d\mathbf{k} = \Pi_{i=1}^3 \int_{-\infty}^{\infty} e^{-2\pi k_i (x_{i,o} - x_{i,1})} dk_i = \delta(\mathbf{x}_o - \mathbf{x}_1) \quad (17)$$

where the index i denotes dimensions and Π implies multiplication. Working now with one of the dimensions, suppressing the subscript i , breaking the integral into real and imaginary parts and using symmetry implies

$$2 \int_o^{\infty} \cos(2\pi k(x_o - x_1)) dk = \delta(x_o - x_1) \quad (18)$$

¹This property of the basis set is essential to their role in filtering. We will revisit it in Appendix A when developing more general basis sets.

Last, we employ the relation between wavenumber and wavelength, $k = 1/L$, to obtain

$$2 \int_o^\infty \frac{\cos(2\pi(x_o - x_1)/L)}{L^2} dL = \delta(x_o - x_1) \quad (19)$$

which effectively defines our original filter, f_L , for a single spatial dimension

$$f_L(x_o - x_1) = 2 \frac{\cos(\frac{2\pi(x_o - x_1)}{L})}{L^2} \quad (20)$$

To filter over a group of length scales L_x , L_y , L_z in three dimensions, one employs the product of (20) appropriate to each dimension. The quantity $K_L(\mathbf{x}_1, t_o)$ represents the energy resident in $K(\mathbf{x}_1, t_o)$ between the length scales L and $L + \delta L$.

2.4. Band Pass Filtering of Final Kinetic Energy

The second step in formulating cross-scale transfers is to represent the energy at \mathbf{x}_1 resident between scales of L_j and L_k by suitable integration over length scales. For example, the energy at scales L_j and greater becomes (again working in one dimension)

$$\begin{aligned} \kappa_{L_j}^\infty(x_1, t_o) &= \int_{L_j}^\infty K_L(\mathbf{x}_1, t_o) dL \\ &= \frac{2}{L_j} \int_{-\infty}^\infty \text{sinc}(2\pi \frac{(x_o - x_1)}{L_j}) K(\mathbf{x}_o, t_o) d\mathbf{x}_o \end{aligned} \quad (21)$$

where

$$\text{sinc}(x) = \frac{\sin(x)}{x} \quad (22)$$

is the well known ‘sinc’ function, often found in signal detection applications. The remainder of the energy at shorter lengths is

$$\kappa_o^{L_j} = K(\mathbf{x}_1, t_o) - \kappa_{L_j}^\infty(\mathbf{x}_1, t_o) \quad (23)$$

Analogous to (13), we define

$$\Gamma_{L_j}^{L_k}(\mathbf{x}, t; \mathbf{x}_1, t_o) = \int_{\mathbf{x}_o} \int_{L_j}^{L_k} f_L(\mathbf{x}_o - \mathbf{x}_1) dL G(\mathbf{x}, t; \mathbf{x}_o, t_o) d\mathbf{x}_o \quad (24)$$

and find that it is governed by

$$\frac{\partial}{\partial t} \Gamma_{L_j}^{L_k} + \nabla \cdot \mathbf{u} \Gamma_{L_j}^{L_k} = -\nabla \cdot \nu \nabla \Gamma_{L_j}^{L_k} - \gamma_{L_j}^{L_k}(\mathbf{x}_1 - \mathbf{x}) \delta(t - t_o) \quad (25)$$

where

$$\gamma_{L_j}^{L_k}(\mathbf{x}_1 - \mathbf{x}) = \int_{L_j}^{L_k} f_L(\mathbf{x}_1 - \mathbf{x}_o) dL \quad (26)$$

This more general formulation anticipates that the length scale dependent basis functions needed to probe the scale dependent structure of K in general domains will not typically be

trigonometric functions. See the Appendix A for more discussion. We will frequently refer to $\gamma_{L_j}^{L_k}$ in the following as a ‘filter’.

The construction of the kinetic energy at \mathbf{x}_1 between L_j and L_k can be written

$$\begin{aligned} \kappa_{L_j}^{L_k}(\mathbf{x}_1, t_o) &= \int_{\mathbf{x}} \Gamma_{L_j}^{L_k} K(\mathbf{x}, 0) d\mathbf{x} \\ &- \int_o^{t_o} \int_S (\mathbf{u} \Gamma_{L_j}^{L_k} K - \nu \Gamma_{L_j}^{L_k} \nabla K) \cdot \vec{n} dS dt + \int_o^{t_o} \int_{\mathbf{x}} R(\mathbf{x}, t) \Gamma_{L_j}^{L_k} d\mathbf{x} dt \end{aligned} \quad (27)$$

where

$$\kappa_{L_j}^{L_k}(\mathbf{x}_1, t_o) = \int_{L_j}^{L_k} K_L(\mathbf{x}_1, t_o) dL = \int_{L_j}^{L_k} \int_{\mathbf{x}} K(\mathbf{x}, t_o) f_L(\mathbf{x} - \mathbf{x}_1) d\mathbf{x} dL \quad (28)$$

Note that (27) is a Lagrangian statement of kinetic energy exchange, in that the modified Green’s function $\Gamma_{L_j}^{L_k}$ tracks fluid movements between the final time $t = t_o$ and the initial time $t = 0$. It is also possible to use this formalism to render an Eulerian statement about kinetic energy exchange. This is discussed in Appendix B. We continue here with the Lagrangian formalism, such having been less discussed in the literature.

2.5. Band Pass Filtering of Kinetic Energy Sources

The third step addresses the cross scale exchanges involved in the creation of $\kappa_{L_j}^{L_k}$. Consider the ‘initial’ kinetic energy, appearing as the first term on the right hand side of (27). Exploiting (16), this quantity can be rewritten

$$K(\mathbf{x}, 0) = \int_{\lambda} K_{\lambda}(\mathbf{x}, 0) d\lambda = \sum_{i=0}^N \kappa_{L_i}^{L_{i+1}}(\mathbf{x}, 0) \quad (29)$$

where the interval $L = 0$ to $L = \infty$ has been broken into $N + 1$ separate intervals and, equating L_j to L_i and L_k to L_{i+1} , $\kappa_{L_i}^{L_{i+1}}$ is as in (28). Rearranging yields

$$\begin{aligned} \int_{\mathbf{x}} \Gamma_{L_j}^{L_k}(\mathbf{x}, 0; \mathbf{x}_1, t_o) K(\mathbf{x}, 0) d\mathbf{x} &= \\ \sum_{i=0}^N \int_{\mathbf{x}} \Gamma_{L_j}^{L_k}(\mathbf{x}, 0; \mathbf{x}_1, t_o) \kappa_{L_i}^{L_{i+1}}(\mathbf{x}, 0) d\mathbf{x} \end{aligned} \quad (30)$$

Eq. (30) expresses how the scale dependent decomposition of the initial kinetic energy contributes to the kinetic energy between L_j and L_k found in the final state. To the extent that the quantity

$$K_{L_j, L_i}^{L_k, L_{i+1}}(\mathbf{x}_1, 0) = \int_{\mathbf{x}} \Gamma_{L_j}^{L_k}(\mathbf{x}, 0; \mathbf{x}_1, t_o) \kappa_{L_i}^{L_{i+1}}(\mathbf{x}, 0) d\mathbf{x} \quad (31)$$

does not vanish for L_i, L_{i+1} outside the range L_j to L_k , there has been cross-scale transfer of kinetic energy. This calculation can be repeated for each band L_i to L_{i+1} to obtain a complete breakdown of the cross-scale transfers from the initial data to the final. Further, this computation can be performed for any time between the initial and final times, thus providing a time series of cross-scale kinetic energy exchanges. Similar decompositions into

scale dependent contributions can be formed from the boundary terms and the source terms in R .

These lead to a complete reconstruction of the kinetic energy at any given scale from large and small scale structures occurring along the quasi-Lagrangian fluid path which, in turn, are measures of energy transfers across scales. Examining the time series of these terms identifies critical points in time when transfers are at their greatest. This information, along with knowledge of the spatial Green's functions structures at those times, identifies the particular events associated with the transfers. A relatively complete overall picture of the energetics of the fluid can be developed.

2.6. Area Averaging

At this point, cross-scale transfers have been formally identified, with perhaps the strongest restriction being that they apply to the development of kinetic energy at a given point. However, it might prove useful to have such a statement averaged over a given area. For example, for the case of merging vortices, one might be interested in an averaged statement of the construction of the energy averaged over the area of the merged vortex. We will pursue this goal in the next section. For now, we note that this once again reduces to an operation on the source points of the Green's functions and can be obtained following the procedures described above.

Suppose that we want a simple 'top-hat' averaging of the results over a given domain, such as would be obtained according to

$$\overline{\kappa_{L_j}^{L_k}}(\boldsymbol{\xi}, t_o) = \int_{\mathbf{x}} \Pi_Q(\mathbf{x}_1 - \boldsymbol{\xi}) \kappa_{L_j}^{L_k}(\mathbf{x}_1, t_o) d\mathbf{x}_1 \quad (32)$$

where Π_Q is the top-hat function defined by

$$\Pi_Q(\mathbf{x}) = \frac{1}{Q^2} \quad (\mathbf{x} \in A) \quad (33)$$

$$= 0 \quad \text{otherwise} \quad (34)$$

with A a square centered on $\mathbf{x} = 0$ of area Q^2 . Following the steps outlined previously leads to

$$\begin{aligned} \overline{\kappa_{L_j}^{L_k}}(\boldsymbol{\xi}, t_o) &= \sum_{n=o}^N \int_{\mathbf{x}} \Phi_{L_j}^{L_k}(\mathbf{x}, 0; \boldsymbol{\xi}, t_o) \kappa_{L_n}^{L_{n+1}}(\mathbf{x}, 0) d\mathbf{x} \\ &+ \sum_{n=o}^N \int_o^{t_o} \int_{\mathbf{x}} \Phi_{L_j}^{L_k}(\mathbf{x} - \boldsymbol{\xi}, t) \rho_{L_n}^{L_{n+1}}(\mathbf{x}, t) d\mathbf{x} dt \end{aligned} \quad (35)$$

where $\rho_{L_n}^{L_{n+1}}$ is the analog to (28) for the energy source terms and we have assumed the boundary contributions vanish. The quantity $\Phi_{L_j}^{L_k}$ is governed by

$$\frac{\partial}{\partial t} \Phi_{L_j}^{L_k}(\mathbf{x}, t; \boldsymbol{\xi}, t_o) + \nabla \cdot \mathbf{u} \Phi_{L_j}^{L_k} + \nabla \cdot \nu \nabla \Phi_{L_j}^{L_k} = -\pi_{Q, L_j}^{L_k}(\mathbf{x} - \boldsymbol{\xi}) \delta(t - t_o) \quad (36)$$

where

$$\pi_{Q, L_j}^{L_k}(\mathbf{x} - \boldsymbol{\xi}) = \int_{\mathbf{x}_1} \Pi_Q(\mathbf{x}_1 - \boldsymbol{\xi}) \gamma_{L_j}^{L_k}(\mathbf{x}_1 - \mathbf{x}) d\mathbf{x}_1 \quad (37)$$

We will mostly work with the ‘modified’ Green’s function $\Phi_{L_j}^{L_k}$ in this paper and will call $\pi_{Q,L_j}^{L_k}$ a sampling function.

Although not pursued here, a similar approach can be applied to the potential energy equation. The details appear in Appendix C. Recall kinetic energy connects to potential energy through pressure work.

To summarize, (35) equates the scale dependent content of the kinetic energy between lengths L_j and L_k , averaged over the A (see (33)), to contributions from the initial kinetic energy, pressure work and dissipation.

3. Application to Merging Vortices

We now apply the previous methodology to a classical GFD problem; namely, the merger of like-signed vortices. We choose this as a first test case because this scenario is usually identified with the upscale cascade of rotating flows. In this sense, we know what the answer should be, broadly speaking, and so can judge the utility of the procedure. In addition, we can examine what new information is provided by this approach.

For this purpose, we used the recently developed MOM6 model². This model includes a number of modern features: most importantly it can be deployed in a purely isopycnal configuration. There are relatively minor modifications to the kinetic energy equation in this setting, all of which are detailed in Appendix D. Perhaps the most significant details are that the Green’s function equation is modified by the appearance of layer thickness in the viscous term, and the velocity field must be treated as compressible.

Our model consisted of a four layer f -plane fluid, with three subsurface interfaces, in a flat bottomed basin of 4000m total depth. The free surface and third layer interface were initially taken as flat, and the second layer, bounded by the first and second interfaces, was seeded with an organized distribution of 200m thick anomalies. All initial velocities were assumed to vanish. As expected, after a very short time adjustment involving gravity wave radiation, the fluid followed a classical path of like-signed vortex merger and opposite signed vortex propagation towards a final state of a single cyclonic-anticyclonic pair. Along the way, smaller vortices are swallowed by larger ones and a recognizable upscale energy cascade takes place. Examples of the fluid state at days 50, 135 and 220 in year 2 of the simulation appear in Fig. 1 in which this sequence is evident.

Numerical details of the simulation appear in Table 1; here we emphasize that the resulting internal deformation radii, 34km, 19km and 14km, are representative of the open ocean. The experiment was simulation for a total of four years, from which we focus on the analysis of days 50 to 220 from the second year of the simulation. The sequence in Fig. 1 comes from that interval, and we have focussed our attention on the merger event occurring in the lower, left hand quadrant outlined by the black lines in the upper two panels. Qualitatively, the two vortices near the bottom of panel (a) on day 50, with radial length scales of roughly 100km, merge into the single, larger vortex seen in panel (c) at day 220. The smaller square in panel (c) encloses the region over which averaging takes place (see (32)).

²<https://github.com/NOAA-GFDL/MOM6>

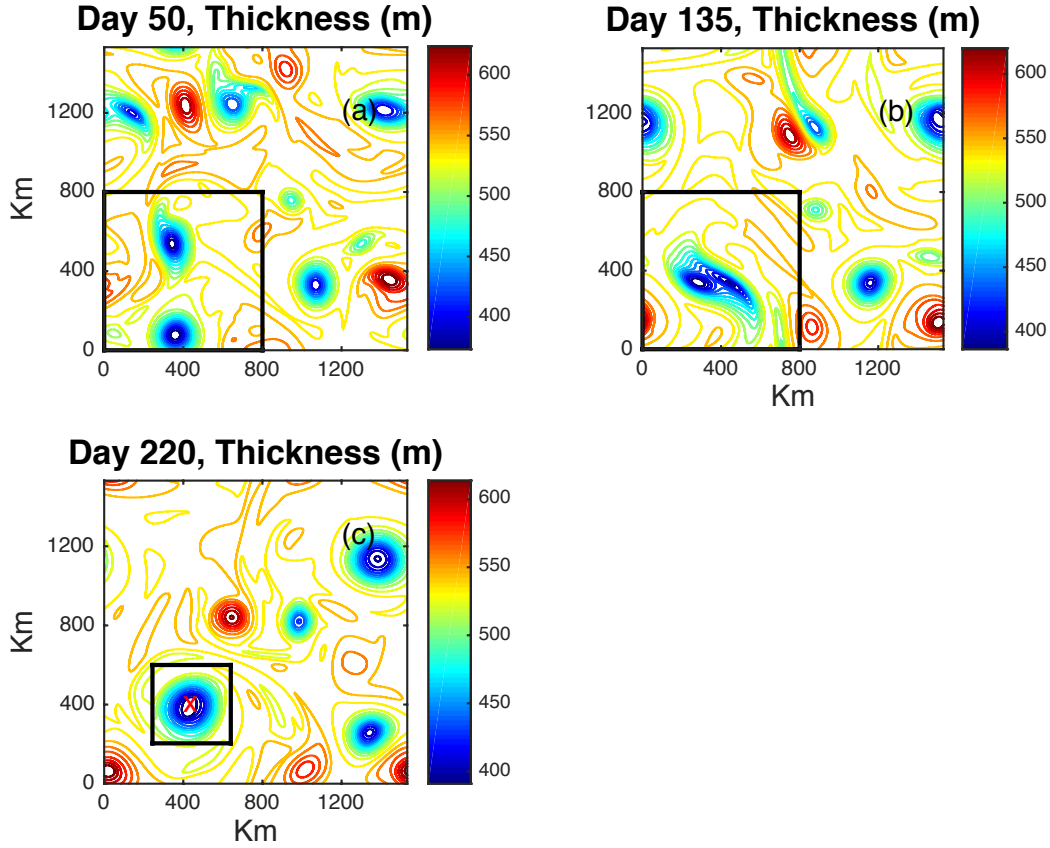


Figure 1: Three separate model states from a simulation of the MOM6 model with merging vortices. The top panels are of second layer thickness at days 50 (left) and 135 (right) and the bottom row shows day 220. The quadrant enclosed by the heavy black lines in the upper panels contains two cyclonic vortices in the process of merger. The smaller square centered on the red ‘X’ at day 220 encloses the merged vortex and indicates the region over which the analysis takes place.

Closing budgets as we are attempting to do here requires high accuracy, especially in the solution of the adjoint equation. MOM6 does not have an adjoint option, so the following procedure was adopted. Output from the merger experiment of horizontal velocity components and thickness were catalogued at intervals of one day, from a simulation that used time steps of 300s. The computational domain was doubly periodic and f -plane, so we developed a spectral model for the adjoint equation in MATLAB (see supporting materials). We adopted a comparable 300s time step for the adjoint equation which, of course, required knowledge of the model state at comparable temporal resolution. This was obtained for any given one day interval by using the six days of MOM6 data centered on that day to interpolate via cubic splines the velocities and thickness to the required adjoint model times. The interpolated velocity and thickness data were used to compute kinetic energy and dissipation at the mass points of the model grid, and the pressure work at that point was estimated as the residual in the kinetic energy equation. Our estimates were checked against direct estimates of the pressure work which could be computed using the daily archived fields and

Quantity	Parameter	Value
zonal grid scale	dx	4000m
meridional grid scale	dy	4000m
time step	dt	300s
zonal grid points	nx	384
meridional grid points	ny	384
Coriolis parameter	f	$10^{-4}s^{-1}$
gravity	g	$9.8m/s^2$
layer 1 density	ρ_1	$1025kg/m^3$
layer 2 density	ρ_2	$1026.5kg/m^3$
layer 3 density	ρ_3	$1027.5kg/m^3$
layer 4 density	ρ_4	$1028kg/m^3$
total depth	H	4000m
lateral viscosity	ν	$40m^2/s$

Table 1: Numerical parameters and values.

the two were found to agree to a high degree of accuracy. In this way, we developed time series of the various inputs to the kinetic energy equation that balanced to machine precision, which in turn allowed us to balance our adjoint based kinetic energy budgets.

As is evident in (36), the evolving modified Green’s functions are related to Lagrangian measures of fluid displacement. This point is emphasized in Fig. 2 which compares the Green’s functions corresponding to the beginning and the end of our experiment, i.e. to days 50 (left) and 220 (right). Comparatively speaking, the left hand side looks considerably more disorganized than the right hand side. This reflects the strongly interactive nature of the evolving fields, which moves particles considerable distances. The distribution on the left represents the density of the particles over the entire domain on day 50 that eventually, at day 220, end up in the square on the right. The multiple maxima appearing on the left are indicative of the primary merging vortices that between days 50 and 220 form the final vortex seen in Fig. 1.

Fourteen different sampling functions, $\pi_{Q,L_i}^{L_{i+1}}$ (see (37)), were developed, each designed to measure the average kinetic energy contained in the region indicated in Fig. 1 between two lengths, ranging from the full domain size (1536km) down to the grid scale. We used the first filter to remove the domain average, i.e.

$$\pi_{Q,L_j}^{L_k} = 1/A_o \quad (38)$$

where $L_j = 0km$, $L_k = 1536km$ and A_o is the domain area. Intermediate lengths were set to $(L_2 \rightarrow L_{13})=1200, 1000, 800, 700, 600, 500, 450, 400, 350, 300, 250$ and $150km$. The adjoint problem appropriate to each of these sampling functions was solved to obtain fourteen different sets of $\Phi_{L_i}^{L_{i+1}}$ functions, and the kinetic energy, pressure work and dissipation fields were filtered using each of the associated filtering functions. This resulted in a 14×14 matrix for each of the kinetic energy and energy input fields, detailing how the various scale dependent quantities contributed to the final kinetic energy at a given time. We will refer to the results in terms of the bands associated with the initial $\Phi_{L_i}^{L_{i+1}}$ functions, as spelled out

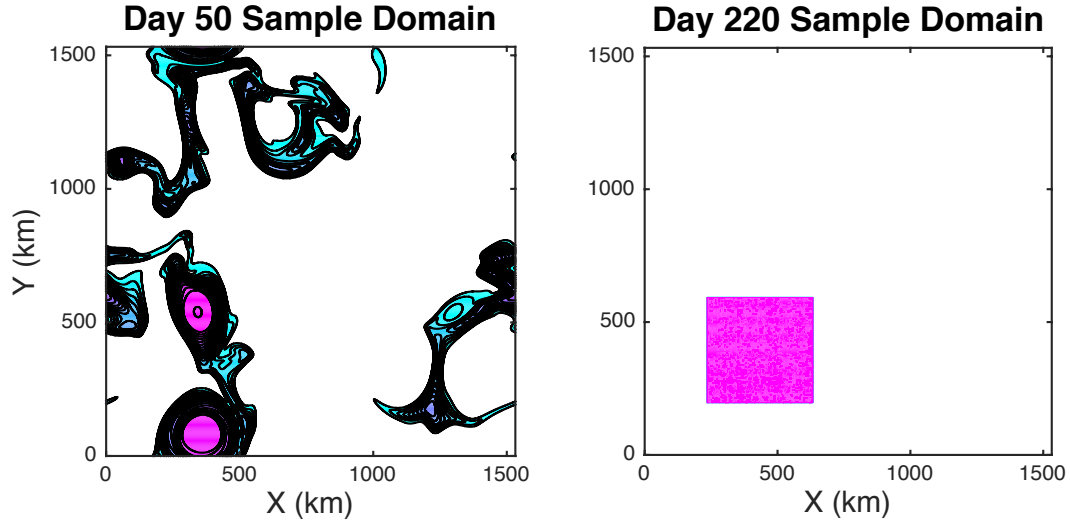


Figure 2: The modified Green's functions, defined by (36), from our numerical experiment at day 50 (left) and day 220 (right). The left panel essentially shows the distribution of the particles that end up in the square on the right. $CI=.05e-4$

in Table 2.

Band No	Limits
1	Basin Average
2	1200-1536km
3	1000-1200km
4	800-1000km
5	700-800km
6	600-700km
7	500-600km
8	450-500km
9	400-450km
10	350-400km
11	300-350km
12	350-300km
12	300-350km
13	250-300km
13	150-250km
14	0-150km

Table 2: Band numbers and associated length scales.

For the purposes of this paper, we consider the transition from day 50 to day 220, i.e. over the entire interval of the vortex merger. We compare initial and final kinetic energy

decompositions $\overline{\kappa_o^{L_i}}$, where

$$\overline{\kappa_o^{L_i}} = \sum_o^i \overline{\kappa_{L_o=0}^{L_i}} \quad (39)$$

as functions of length scale in Fig. 3. Note that some of the values are not positive. This is a consequence of (15), which insures that when summed all filtered contributions converge on the value of the energy in physical space. What is guaranteed to be positive is the final sum. Contributions from individual length scale bands can contribute negative values to achieve this goal.

The red line is $\overline{\kappa_o^{L_i}}$ of the initial kinetic energy within the square seen in Fig. 1(c). Although relatively flat, it does exhibit a peak in the range $L = (400 - 600)km$ which reflects the two vortices present at day 50. While indicative of the early energy distribution, a more telling decomposition comes from that found by subsampling the field according to the day 50 Green's function (see Fig. 2). This appears in the green line, which shows a weak dip in values at small length scales, followed by a steady growth. The final, blue, line is the decomposition associated with the day 220 state inside the square in Fig. 1(c). It is clear that, compared to both other curves, the kinetic energy has both grown considerably in amplitude, particularly at large L , which is consistent with an upscale cascade.

A more detailed view of the cross scale exchanges is shown in Fig. 4. Here we plot the decomposition of the large scale (band 2), intermediate scale (band 8) and small scale (band 12) kinetic energy in the upper three panels. Each plot consists of 43 separate values. The first value is the band passed kinetic energy at day 220. This is followed in the next 14 slots by the initial kinetic energy contributions from the various bands. Those values are distinguished by a magenta axis. The next 14 slots are the various band passed contributions from the pressure work (cyan axis) and the final 14 slots (blue axis) are the contributions from dissipation. Each group of 14 contributions is also separated by a vertical black line. The solid black horizontal lines in each slot are the values of the contributions, and the red line starting from the second slot shows the cumulative sum of the values. As shown in (27), the sum of all the inputs should match the final band passed kinetic energy; equivalently, the final red value at slot 43 should match the black line in the first slot in amplitude. Note that this holds in all three plots. Finally, the three dashed green vertical lines mark the band corresponding to the band of the final kinetic energy for each of the initial kinetic energy, pressure work and dissipation. Bands left of the green line correspond to larger length scales and those to the right to shorter length scales.

The bottom panel connects the band number on the y-axis with the length scale range of that band on the x-axis.

3.1. Large Scales

For example, consider Fig. 4a. The first slot is occupied by

$$\overline{\kappa_{L_1}^{L_2}}(\mathbf{x}, t_o) = \int_{\mathbf{x}} K(\mathbf{x}_o, t_o) \pi_{Q, L_1}^{L_2}(\mathbf{x} - v\mathbf{x}_o) d\mathbf{x}_o \quad (40)$$

which is the band 2 kinetic energy in the final state, with a value of roughly $5.5 \times 10^{-3} m^2/s^2$. The next 14 slots, from slot 2 to 15, are occupied by

$$\int_{\mathbf{x}} \kappa(\mathbf{x}, 0)_{L_n}^{L_{n+1}} \Phi_{L_1}^{L_2}(\mathbf{x}, 0, \mathbf{x}_o; t_o) d\mathbf{x}_o \quad (41)$$

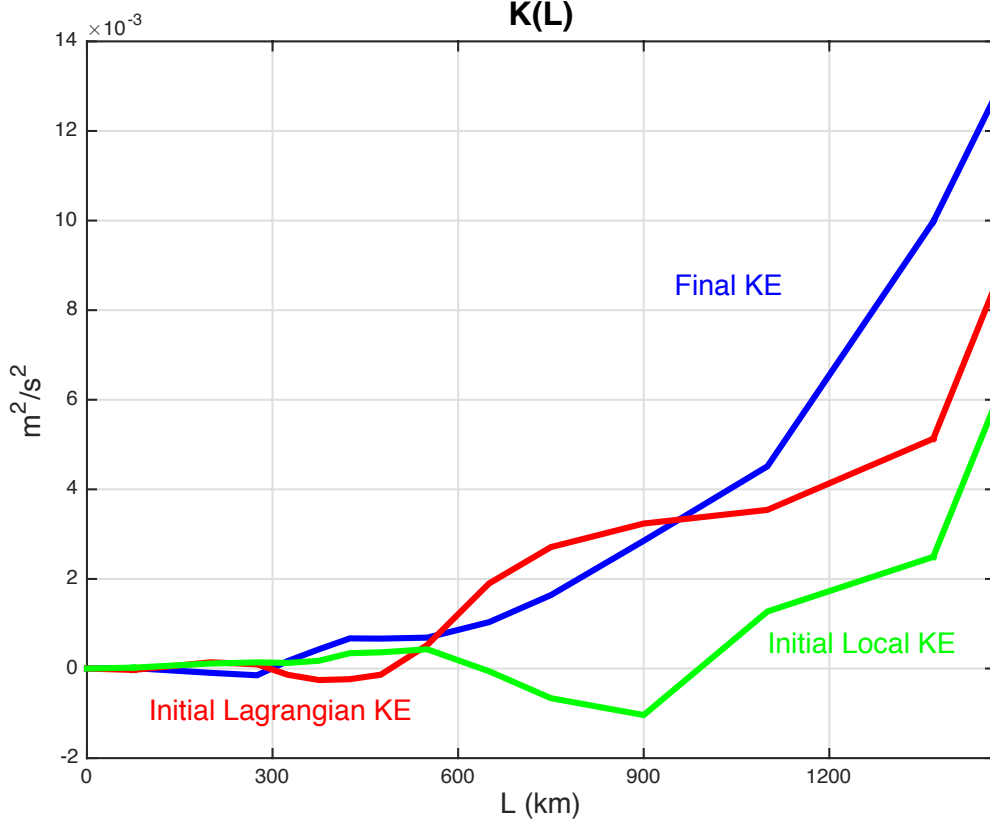


Figure 3: Initial length scale structure of the kinetic energy, $\overline{\kappa_o^{L_i}}$, compared to final length scale structure. The red line is based on the initial kinetic energy as sampled by the Lagrangian field in Fig. 2 (left) and the blue line is based on the final kinetic energy inside the square in Fig. 2 (right). The final field exhibits clear evidence of kinetic energy growth at longer scales.

where

$$\kappa(\mathbf{x}, 0)_{L_n}^{L_{n+1}} = \int_{\mathbf{x}_1} K(\mathbf{x}_1, 0) \gamma_{L_n}^{L_{n+1}}(\mathbf{x} - \mathbf{x}_1) d\mathbf{x}_1 \quad (42)$$

is the initial kinetic energy content contained in band n (see Table 2). The dashed green line marks the third slot, which is the second band of the initial kinetic energy. This is the same band appearing in the first slot. It is clear from comparing the black line in the green dashed slot to the black line in the first slot that this band has grown in kinetic energy over the experiment, from an initial value of $1.3 \times 10^{-3} m^2/s^2$ to roughly $5.5 \times 10^{-3} m^2/s^2$. The values in the remaining slots in the kinetic energy zone represent the contributions from shorter length scales in the initial kinetic energy to the band 2 final kinetic energy structure. The next several values in the initial kinetic energy zone are positive, indicating a transfer of smaller scales upward, but then even out to very small values. The cumulative red line indicates the total transfer to band 2 final kinetic energy from initial kinetic energy is roughly $3.3 \times 10^{-3} m^2/s^2$, with the biggest single contributor being the local band 2. In summary, this plot suggests an upscale kinetic energy to kinetic energy cascade.

The slots from 16 to 29 are occupied by

$$\int_o^{t_o} \int_{\mathbf{x}} (-pw(\mathbf{x}, t)_{L_n}^{L_{n+1}}) \Phi_{L_1}^{L_2}(\mathbf{x}, t, \mathbf{x}_o; t_o) d\mathbf{x}_o dt \quad (43)$$

where

$$pw(\mathbf{x}, t)_{L_n}^{L_{n+1}} = \int_{\mathbf{x}_1} (up_x + vp_y)(\mathbf{x}_1, t) \gamma_{L_n}^{L_{n+1}}(\mathbf{x} - \mathbf{x}_1) d\mathbf{x}_1 \quad (44)$$

is the pressure work performed in band n at time t of the calculation. The green dashed line falls in slot 17 because that band corresponds to the band appearing in the first slot. The values in the remaining slots represent contributions to band 2 final kinetic energy from other bands in the pressure work occurring along the fluid trajectory. As can be seen from the red lines, pressure work is considerably more active across the bands than kinetic energy. The green dashed slot contains a negative value, indicating a net loss of kinetic energy by the pressure work in this band. However the next several slots are positive, indicative of an upscale cascade of energy due to pressure work, and in total, these transfers are considerably stronger than the in-band loss. In total, pressure work elevates kinetic energy by $3.8 \times 10^{-3} m^2/s^2$, and is roughly 3 – 4 times larger than the kinetic to kinetic transfer, with most of the transfers coming from smaller scales. This result is somewhat surprising, as most previous studies have focussed on kinetic to kinetic transfers. Contributions from other sources, such as pressure work, have not received as much attention. Here they are dominant.

Last, we come to the dissipative contributions, appearing in slots 30 to 43. Here, the surprise is that the net dissipative effects acting on band 2 are relatively large. Over all scales, the net effect is slightly less than $-1.3 \times 10^{-3} m^2/s^2$, although the total is dominated by the in-band, band 2, dissipative impact of slightly more than $-1.3 \times 10^{-3} m^2/s^2$. The reason this is unexpected is that band 2, from 1536 – 1200km, is a large scale band, and dissipation is dominantly a small scale process. This is certainly true as well in the present simulation, as is seen in Fig. 5a of the modeled dissipation field at day 135. However, dissipation is broadly distributed and occurs at locations governed by the large scale, so that when filtered, dissipation imprints importantly on the evolution. This appears in Fig. 5b which is the dissipation field at day 135 filtered through band 2.

3.2. Intermediate and Small Scales

Band 8, in Fig. 4b, loses kinetic energy over the simulation, as can be seen by comparing the black line in the first slot with that in the first green dashed slot. However, the scale of this loss is close to two orders of magnitude smaller than those described for band 2. Essentially, this is an inert band in regards to kinetic to kinetic exchanges. Across the bands, initial kinetic inputs to final kinetic energy are quite small, at a net value of $3 \times 10^{-6} m^2/s^2$. Note however that pressure work is quite active across all bands. Larger scale bands, to the left of the green dashed line in the pressure work zone, tend to be positive. This is indicative of a down-scale transfer of energy from larger scales to band 8. However, smaller scales tend to be negative in amplitude, and overall comparable in size to the contributions from the larger scales. The net effect of pressure work across all bands, is negative, at a value of $-1.7 \times 10^{-5} m^2/s^2$, indicative of a net transfer to small scales. Band 8, with respect to

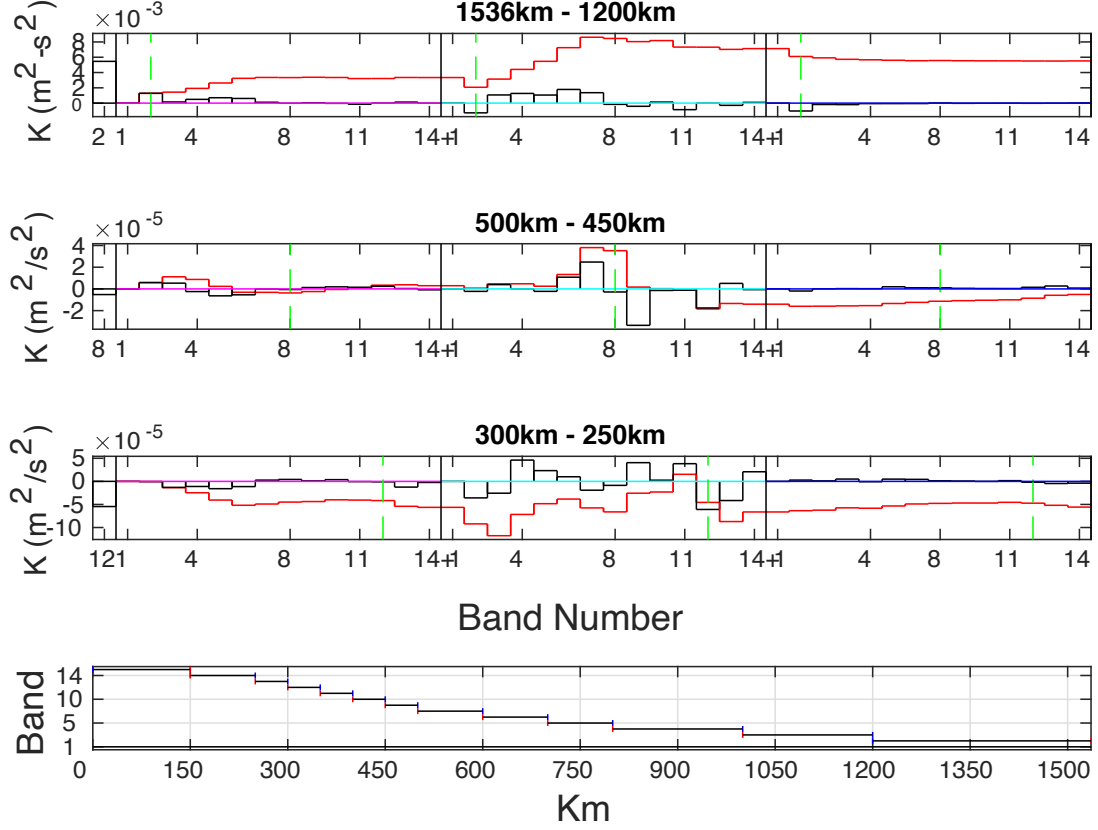


Figure 4: Three kinetic energy decompositions corresponding to bands 2 (upper), 8 (next upper) and 12 (next lower). Vertical black lines limit the final kinetic energy in the band, the contributions to that band from the 14 bands of the initial kinetic energy, pressure work and dissipation, respectively. Horizontal black lines denote values of the quantity and the red line is the cumulative sum, moving to the right, of the various contributions. The abscissa denotes band number and the ordinate is energy in m^2/s^2 . The bottom plot connects the band number on the y-axis to the length scales within that band, appearing on the x-axis in km .

pressure work, acts like a pass-through, allowing energy from larger scales to move through to smaller scales, while adding a small amount to the net. In this intermediate scale band, the principal signal is a down-scale contribution to kinetic energy.

Finally, band 12, in Fig. 4c, is also a band of relatively weak energy transfers, if still stronger than band 8. Overall, there is a stronger kinetic energy loss at these small scales, roughly $-5.5 \times 10^{-5} m^2/s^2$, most of which, $-4.0 \times 10^{-5} m^2/s^2$ is accounted for by losses to larger length scales. This is indicative of a kinetic to kinetic upscale transfer. Once again, it is seen the pressure work to kinetic energy transfers are far more active. While the net effect is relatively small, $-1 \times 10^{-5} m^2/s^2$, it is the result of large transfers of both signs across the length scale spectrum. A clear pattern does not emerge. Losses and gains to other length scale bands of both larger and small character occur. Perhaps the safest interpretation is that the weak values involved in this band indicate it responds erratically to the conditions imposed on it by the energetically dominant larger length scales.

Time histories of two of the pressure work energy transfers is shown in Fig. 6, i.e. those for band 2 to band 2 and for band 3 to band 2. These are amongst the most active pressure

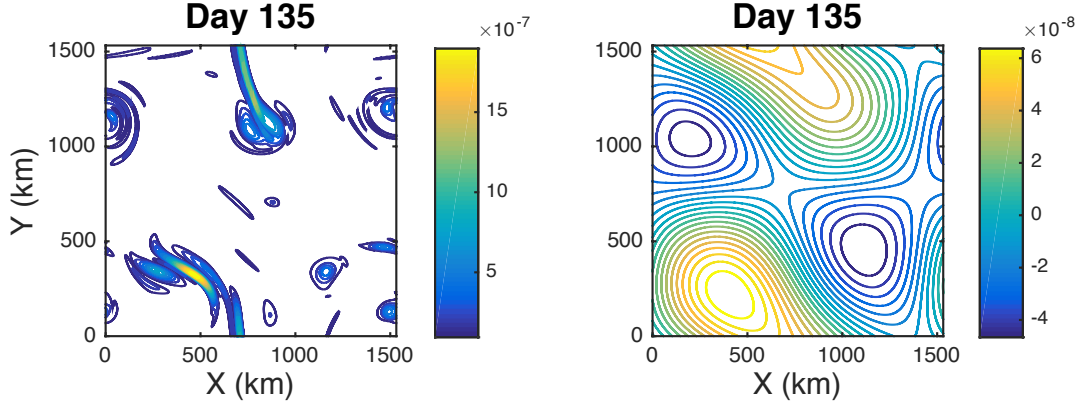


Figure 5: The distribution of dissipation at day 135 appears on the left. Note that it is concentrated into small areas. Dissipation as it affects band 2 appears on the right. Although this is a large scale mode, dissipation is still a major input to the kinetic energy development, as is seen in Fig. 4.

work bands seen in Fig. 4 and, despite their similarity in length scales, show opposite trends. The band 2 to band 2 transfer appears on the left. Early in the experiment, pressure work adds to kinetic energy, but the trends reverses around day 120, and pressure work depletes kinetic energy strongly to day 220. The last 100 days are thus associated with a large scale tendency for flow to be directed towards high pressures and away from low pressures. Fig. 6b, the pressure work contribution of band 3 to band 2, shows the opposite trend. Pressure work persistently builds kinetic energy through most of the experiment, except for the period from day 100 to day 120. Towards the end, the net levels to a constant value, equivalent to the cessation of pressure work contributions between bands.

These tendencies are explained in part by examining the anatomy of the pressure work contributions. For this we show in Fig. 7 the pressure work field as it appears to band 2 at day 200, for the two bands 2 and 3. On the left is the pressure work as seen by band 2, having been filtered through band 2. Note that the structure is dominated by relatively large scale negative values. These are zones dominated by cyclones, and hence low pressures. The negative pressure work values indicate flows away from the low pressure centers, which is a flow field designed to bring the lows together. As a result, the negative pressure work at largest scales is a signal of vortex merger. In contrast, the pressure work filtered through band 3, as it appears to band 2 appears on the right. Here, the distribution consists much more evenly of both highs and lows of comparable magnitude. Day 200 is relatively late in the merger event, and is a point where on these scales of band 3, the fields are becoming relatively symmetrized. As a result, the net pressure work from this band is quite small, consistent with the late parts of the time series in Fig. 6 (right), where the time history of integrated pressure work has leveled off.

4. Summary

A new method for computing cross-scale energy transfers in fluid flows has been described and applied to a well-known example. The technique has both Lagrangian and Eulerian

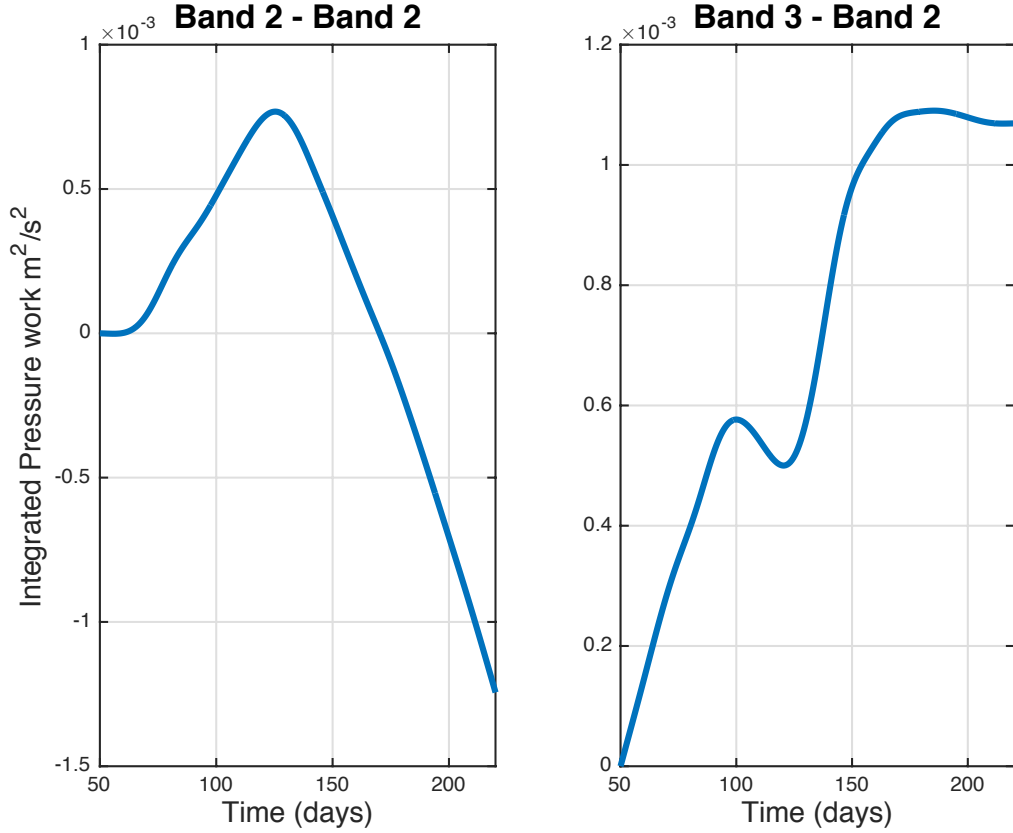


Figure 6: Timeseries of the pressure work input to kinetic energy. The pressure effect on band 2 of band 2 appears on the left and on band 2 due to band 3 on the right. Note the difference in scale on the y-axis. The net pressure work between these two cases are opposites, with the band 3 to band 2 case leveling off late in the event, while the band 2 to band 2 case continues to drain kinetic energy.

forms. In this paper, we mostly examine the former method, which exploits the Lagrangian nature of kinetic energy evolution to relate kinetic energy at any one location and time to its flow history. The Lagrangian history is computed by solving an adjoint equation obtained by a classical Green's function approach. The scale content of the final kinetic energy structure can be obtained by solving a filtered version of the adjoint equation, and projecting the kinetic energy field onto the result. In addition the same filter used on the Green's function equation can be used to diagnose the scale dependent inputs to the kinetic energy evolution, such as pressure work and dissipation, in a relatively straightforward way. This leads rather naturally to a quantification of how energy from one band of length scales transfers to another during the nonlinear evolution of the flow. The procedure also allows for a diagnosis of the nature of the energy transfers, eg kinetic to kinetic or kinetic to pressure work, as well as examination of how the transfers are structured in time and space. While we have here focussed on kinetic energy, the same approach can be applied to potential energy evolution.

We have applied the procedure to the classic problem of vortex merger in a stratified fluid. The well known MOM6 model was deployed in a four layer isopycnal configuration and with

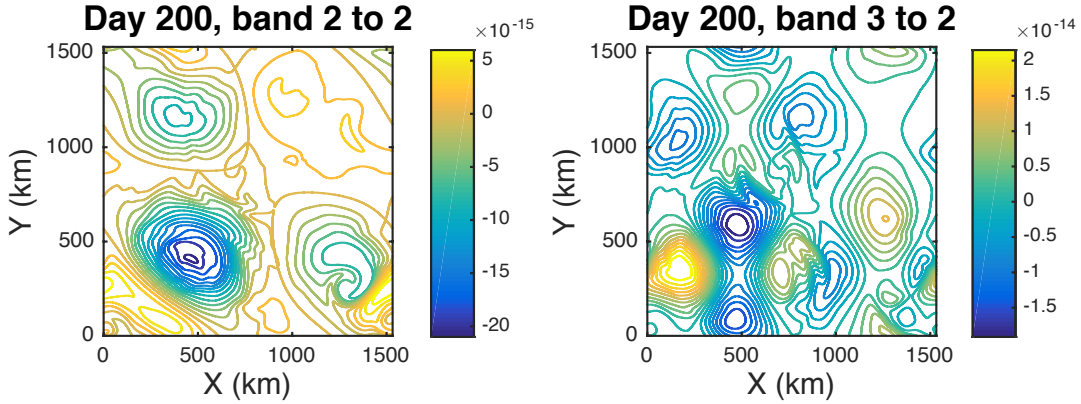


Figure 7: The anatomy of the pressure work occurring at day 200, relatively late in the merger event. The pressure effect on band 2 of band 2 appears on the left and from band 3 to band 2 on the right. The former case is dominated by negative values near regions of cyclones, and reflects the tendencies at these largest scales for cyclones to merge. The distribution on the right hand side is much more evenly distributed between positive and negative values, and indicates a weaker pressure work associated with a more symmetrized, smaller scale structure.

an initial condition consisting of a sequence of undulations in second layer thickness. The system evolution proceeds with like signed vortices merging and opposite signed vortices pairing up and propagating. We analyzed a particular merger event in detail.

The subsequent analysis showed the expected result that kinetic energy exhibits an upscale cascade; however, the procedure also illustrates several somewhat novel aspects about merger. Perhaps most significantly, the primary energy transfers involve pressure work to kinetic energy exchanges, rather than kinetic to kinetic energy exchanges. This result complements several published studies of upscale energy transfers which have focussed on Fourier transforms of the nonlinear advection terms in the momentum equations by emphasizing the role played by pressure work. Dissipation also emerged as a surprisingly large effect on larger scale energy exchanges. This was due in part to the tendency for the larger scale flow to organize regions of small scale dissipation, so that the large-scale projection of dissipation was substantial. Also, several of the intermediate ranges in an integral sense were relatively inert, in that initial and final kinetic energies were often quite similar; however those same ranges were found to be very dynamically active, and acted as pass-throughs, receiving potential energy from smaller scales and passing them along to larger scales. Finally, the diagnoses identify the critical points in time when exchanges are at their peak, and allows for an examination of the events associated with the exchanges. Spatial information about the nature of the exchanges is also provided and allows for a diagnosis of the involved mechanisms.

The example problem considered here is highly idealized, with an isotropic setting, doubly periodic boundaries and an unobstructed geometry. The promise of the technique, however, is that it potentially generalizes in a straightforward way to realistic ocean simulations, in which the flows are highly anisotropic and inhomogeneous, and the domains are often geometrically complex. The examination of such regions, such as the Gulf Stream, the Kuroshio and other major ocean currents is of importance to the understanding of the global ocean energy cycle.

It will be of great interest to see what new light this method will cast on such regions.

Acknowledgments

This work was supported through NSF grants OCE-1537304, OCE-1829856, OCE-1941963 and the French ‘Make Our Planet Great Again’ program managed by the Agence Nationale de la Recherche under the Programme d’Investissement d’Avenir, with the reference ANR-18-MPGA-002. Computations were performed on the National Computational Infrastructure, Canberra, AU, which is funded by the Australian Government. The authors in particular would like to recognize many interesting and relevant conversations with L. Zanna, B. Arbic and B. Fox-Kemper.

Appendix A. Basis Functions for Arbitrary Domains

Trigonometric functions form the obvious filtering basis set for unbounded and simple domains. Unfortunately, such domains are rarely associated with realistic problems, so it is necessary to consider a generalization when filtering a variable in a realistic setting. The purpose of this appendix is to suggest one method to develop an appropriate basis set. We stress that the example in the main part of the paper uses classical trigonometric functions and doesn’t involve any of the more elaborate filters computed here.

The key property of trigonometric functions that leads to their utility is (16). In turn, the demonstration of this property for trigonometric functions depends on their orthonormality, i.e. that

$$\int_{-\infty}^{\infty} f_n(\mathbf{x}) f_m(\mathbf{x}) d\mathbf{x} = \delta_{n,m} \quad (\text{A.1})$$

where $f_n(\mathbf{x})$, $f_m(\mathbf{x})$ are two trigonometric functions characterized by eigenvalues n , m and $\delta_{n,m}$ is the Kronecker delta function. We wish to retain these properties while developing basis functions appropriate to more general settings.

It is widely recognized that orthonormal functions are often developed from dynamical equations. Here we make the conscious decision to avoid any basis set developed from dynamical considerations. The reason for this is we want to make a scale dependent statement only, and not a statement about any preconceived dynamical content. To this end, consider the classical Helmholtz equation

$$\nabla^2 \psi + k^2 \psi = 0 \quad (\text{A.2})$$

In the presence of homogeneous boundary conditions, the solution of this equation is $\psi = 0$, except possibly for special values of the constant k , making it an eigenvalue problem. By construction, the eigenvectors of (A.2) are the eigenvectors of the Laplacian operator. If one is in possession of two separate eigenvectors of (A.2), say ψ_m and ψ_n , they are automatically orthogonal, as we now demonstrate. First, insert one of these eigenvectors into (A.2) and multiply by the other

$$\psi_n \nabla^2 \psi_m + \psi_n k_m^2 \psi_m = 0 \quad (\text{A.3})$$

where k_m is the eigenvalue associated with ψ_m . Integrating over the domain in question

$$\int_S (\psi_n \nabla \psi_m - \psi_m \nabla \psi_n) + \int_V (\psi_n \nabla^2 \psi_m + \psi_m k_m^2 \psi_n) dV = 0 \quad (\text{A.4})$$

where S is the domain boundary enclosing the integration volume V . In the presence of homogeneous boundary conditions and introducing the remaining eigenvalue k_n

$$(k_m^2 - k_n^2) \int_V \psi_m \psi_n dV = 0 \quad (\text{A.5})$$

Eq. (A.2) being a Sturm-Liouville equation possesses an infinity of eigenvector/eigenvalue pairs that can be ordered from smallest to largest so, in general, the factor multiplying the integral on the left hand side of (A.5) does not vanish. Thus, by construction, the eigenvalues are orthogonal. Enforcing

$$\int_V \psi_m^2 dV = 1 \quad (\text{A.6})$$

insures they are also suitably normalized. Further classical analysis shows arbitrary functions in V can be represented by an appropriate superposition of the eigenfunctions (in a least squares sense) where the coefficients of the representation are computed by exploiting orthonormality.

In regards to the length scale, L , we would associate with any particular eigenfunction, the form of the Helmholtz equation suggests

$$L \approx k^{-1} \quad (\text{A.7})$$

We will see in multiple dimensions that this simple relationship is problematic.

While for irregular domains with islands and topography, the solutions cannot generally be written down, they can be developed in relatively straightforward numerical ways. As an example, consider the domain shown in Fig. A.8, consisting of a single circular island inside of an otherwise square domain. The Laplacian operator is discretized using a five point stencil. Periodic boundary conditions are placed on the outer edge of the domain and the eigenfunctions are required to vanish on the island boundary. These are conditions consistent with the orthogonality of the resulting Helmholtz solutions and are entirely reflected in the details of the stencil coefficients. In principle, the coefficients can be formed into a $nx \times ny$ by $nx \times ny$ square matrix, where nx , ny are the lengths of the domain in the east-west, north-south directions, respectively. For the present calculation, $nx = ny = 70$ and grid spacing dx , $dy = 5m$ is isotropic. In fact, this does not account for the island, inside of which are several of the regularly spaced grid points, but which represent locations inaccessible to the fluid. It is necessary to remove those points, resulting in slightly smaller matrix, the regular, pentadiagonal structure of which is then interrupted.

This matrix can be fed into a standard eigenvalue extraction routine; we used the function ‘eig’ in MATLAB. The gravest and tenth-most gravest eigenmodes appear in Fig. A.9; these are associated with eigenvalues $k_1^2 \approx 10^{-4}m^{-2}$ on the left and $k_{10}^2 \approx 1.4 \times 10^{-3}m^{-2}$, or equivalently $L_k \approx 200m$ (left) and $L_{10} \approx 52m$ (right). It is easy to associate a length scale of $200m$ with the former, but the latter also measures comparable length scales while being spatially considerably more complex. It is thus not straightforward to simply connect the eigenvalue size and the associated length scale. This is due to the multiple spatial dimensions involved in the analysis, and arises in the unbounded domain using simple trigonometric functions as well. For example, high wavenumbers in the meridional direction coupled to low wavenumbers in the zonal direction can be associated with eigenvalues very similar

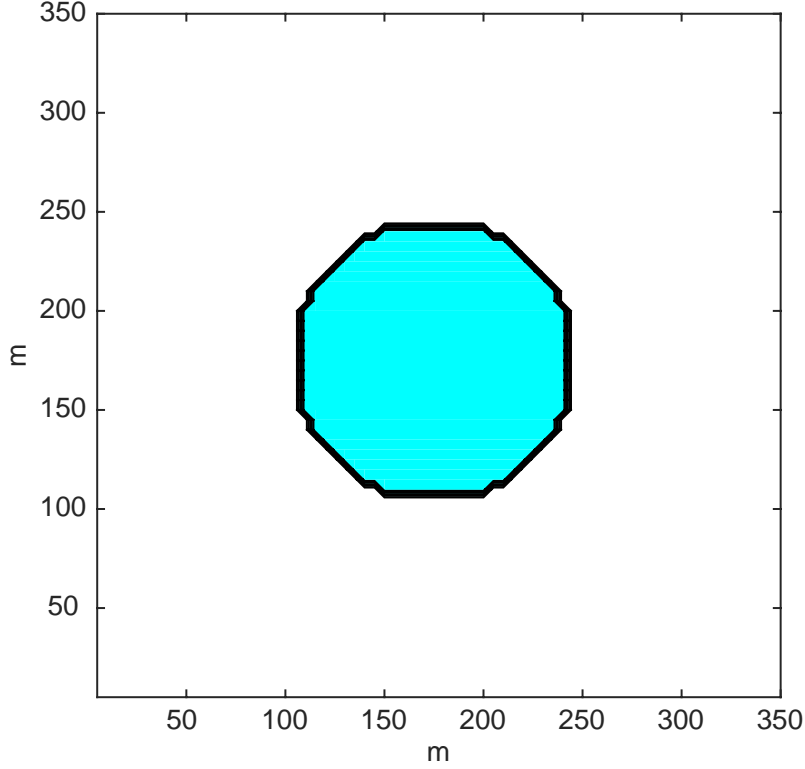


Figure A.8: An example of an irregular domain, consisting of a circular island inside a square domain. The island, outlined in black, occupies about 10% of the area. Vanishing boundary conditions are put on the island boundary and periodic conditions on the outer edge.

to comparable wavenumbers of intermediate values distributed symmetrically in the two directions. We recommend a different way to associate length scales to the analysis below.

We now demonstrate these functions satisfy constraint (16). Exploiting orthonormality, we anticipate

$$\sum_n a_n \psi_n(\mathbf{x}) = \delta(\mathbf{x} - \mathbf{x}_o) \quad (\text{A.8})$$

where

$$a_n = \psi(\mathbf{x}_o) \quad (\text{A.9})$$

The result of evaluating this formula using the present eigenfunctions appears in Fig. A.10(left), where the source point $\mathbf{x}_o = (50m, 150m)$, i.e. just south of the island. Clearly, we have reproduced to within domain discretization a Dirac delta function. The analysis in the main part of the paper, however, emphasized the use of integrals of filters between two length scales. We present in Fig. A.10(right) the result of summing all the eigenfunctions below a given eigenvalue. This corresponds to (26), in particular to $\gamma_o^{L_j}$ for the 100th eigenvalue ($k_{100}^2 \approx .012$). Cross sections of the sampling function on the dashed lines in Fig. A.10b appear in the two lower panels. Note that the sampling function γ_{100} avoids the island, as seen in Fig. A.10c, while maintaining a qualitative resemblance to the *sinc* function (see Fig. A.10). The length scale L associated with the eigenvalue is roughly $90m$, which corresponds

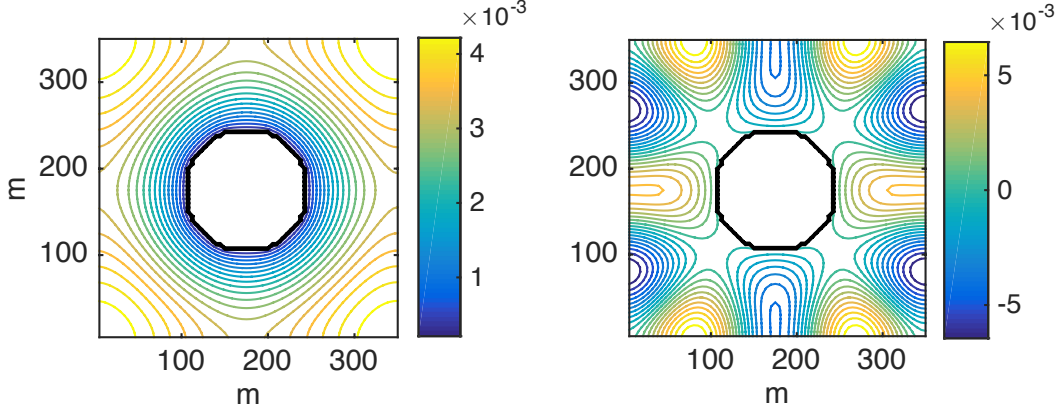


Figure A.9: The first (left) and tenth (right) eigenmodes of the Helmholtz equation for the domain in Fig. A.8. The island location appears in black. Clearly the gravest mode captures the broadest possible scales of the domain and can be associated with the length scale $L = 200m$. The higher mode, however, while more complex spatially, is also measuring comparable length scales of roughly $200m$, in spite of being associated with a much higher eigenvalue.

well to the length scale of the sampling function, particularly as suggested by the distance separating the neighboring highest positive lobes seen in Fig. A.10. We recommend this as the preferred way to associate a lengthscale L_j with a given analysis.

Clearly this technique, while promising, is in need of considerable study.

Appendix B. Eulerian Kinetic Energy Exchanges

This paper deals primarily with the Lagrangian version of the kinetic energy equation, somewhat in a manner following Nagai et al. (2015) and Shakespeare and Hogg (2017). However, an Eulerian statement can be made as well and the formulation is outlined here. Starting with (27), the final time t_o is chosen to be very small, such that

$$\kappa_{L_j}^{L_k}(\mathbf{x}_1, t_o) = \int_{\mathbf{x}} \Gamma_{L_j}^{L_k} K(\mathbf{x}, 0) d\mathbf{x} + \left(\int_{\mathbf{x}} R(\mathbf{x}, t) \Gamma_{L_j}^{L_k} d\mathbf{x} \right) t_o \quad (\text{B.1})$$

where we have neglected boundary contributions. Integrating (25) over a small time interval centered on t_o results in

$$\Gamma_{L_j}^{L_k}(\mathbf{x}, t_o; \mathbf{x}_1, t_o) = \gamma_{L_j}^{L_k}(\mathbf{x} - \mathbf{x}_1) \quad (\text{B.2})$$

so (B.1) can be rewritten

$$\int_{\mathbf{x}} \frac{\partial}{\partial t} (\Gamma_{L_j}^{L_k} K(\mathbf{x}, t)) d\mathbf{x} = \int_{\mathbf{x}} R(\mathbf{x}, t) \Gamma_{L_j}^{L_k} d\mathbf{x} \quad (\text{B.3})$$

Using the chain rule converts (B.3) to

$$\int_{\mathbf{x}} \left(K \frac{\partial}{\partial t} \Gamma_{L_j}^{L_k} + \gamma_{L_j}^{L_k} \frac{\partial}{\partial t} K \right) d\mathbf{x} = \int_{\mathbf{x}} R(\mathbf{x}, t) \Gamma_{L_j}^{L_k} d\mathbf{x} \quad (\text{B.4})$$

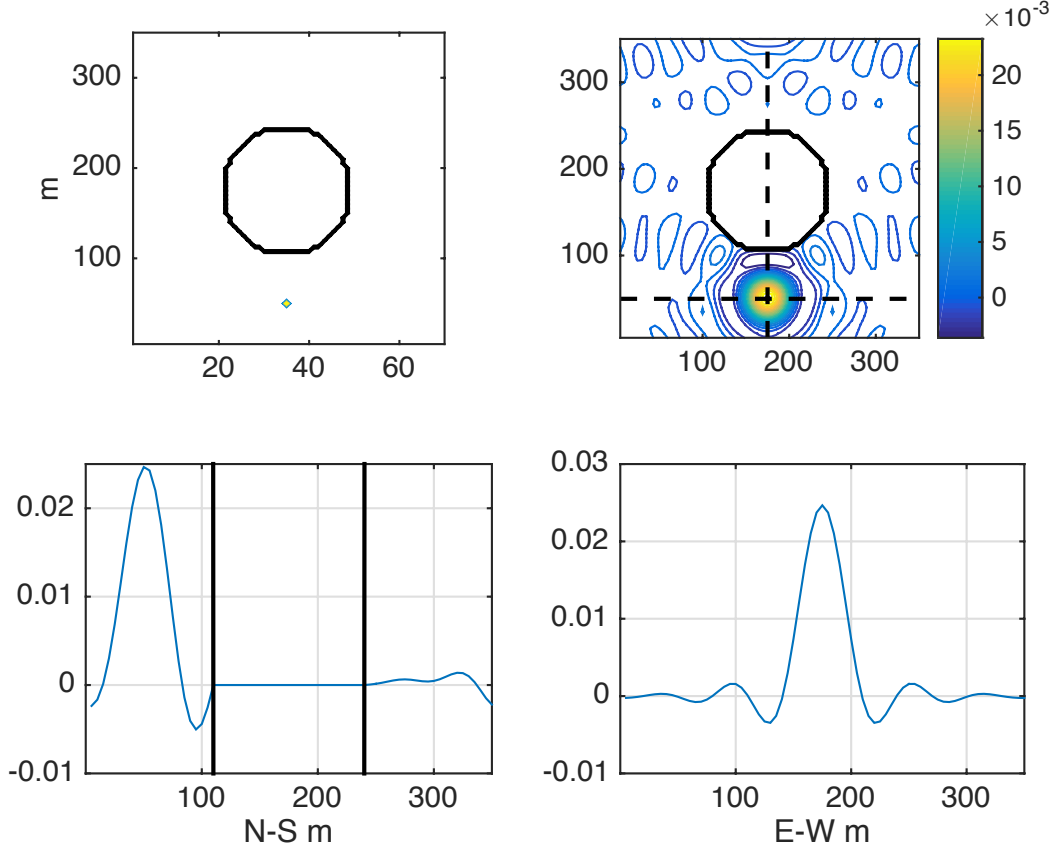


Figure A.10: (top left) The reconstruction of a Dirac delta function inside the domain in Fig. A.8. The island location appears in black (in all panels) and the delta function appears just to the south of mid island. The γ_{100} sampling function (top right). Note that it does not penetrate the island, instead sampling only the active fluid. The dashed black lines denote the locations of the transects appearing in the lower panels. The north-south transect through γ_{100} appears on the lower left. The black lines denote the island location at this longitude. The east-west transect through γ_{100} appears lower right. Note the qualitative resemblance of the structure to a *sinc* function. The distance between neighboring high lobes is roughly $75m$ and consistent with the rough length scale estimate of $90m$ associated with the eigenvalue.

Finally, substituting with (24) and integrating by parts leads to

$$\int_{\mathbf{x}} \gamma_{L_j}^{L_k} \frac{\partial}{\partial t} K d\mathbf{x} = \int_{\mathbf{x}} \gamma_{L_j}^{L_k} (-\nabla \cdot \mathbf{u} K + \nabla \cdot \nu \nabla K + R) d\mathbf{x} \quad (\text{B.5})$$

The left hand side is recognized as the filtered version of the time rate kinetic energy change, and the right hand side breaks it up into advective, diffusive, pressure work and dissipative contributions. The filter $\gamma_{L_n}^{L_{n+1}}$ is independent of time, so the left hand side of (B.5) can be rewritten

$$\int_{\mathbf{x}} \gamma_{L_j}^{L_k} \frac{\partial}{\partial t} K d\mathbf{x} = \frac{\partial}{\partial t} \int_{\mathbf{x}} \gamma_{L_j}^{L_k} K d\mathbf{x} = \frac{\partial}{\partial t} \kappa_{L_j}^{L_k} \quad (\text{B.6})$$

Thus the Eulerian version of the present analysis concerns the time rate of change of the band passed kinetic energy. The kinetic energy appearing in the advective and diffusive terms can be similarly decomposed, which in turn yield formulae expressing the exchange

of kinetic energy between bands involving spatial operations on the filter. For example, the advective contribution becomes

$$\int_{\mathbf{x}} \gamma_{L_j}^{L_k} (-\nabla \cdot \mathbf{u} K) d\mathbf{x} = \int_{\mathbf{x}} \gamma_{L_j}^{L_k} (-\nabla \cdot \mathbf{u} \int_{\lambda} K_{\lambda} d\lambda) d\mathbf{x} \quad (\text{B.7})$$

After some algebra and modifying the order of integration

$$\int_{\mathbf{x}} \gamma_{L_j}^{L_k} (-\nabla \cdot \mathbf{u} K) d\mathbf{x} = \int_{\lambda} \int_{\mathbf{x}} \gamma_{L_j}^{L_k} \mathbf{u}(\mathbf{x}) \int_{\mathbf{x}_{\alpha}} K(\mathbf{x}_{\alpha}) \nabla f_{\lambda}(\mathbf{x}_{\alpha} - \mathbf{x}) d\mathbf{x}_{\alpha} d\mathbf{x} d\lambda \quad (\text{B.8})$$

In this Eulerian view, advective contributions appear explicitly. This procedure is somewhat like that described in Aluie et al. (2018), although we work directly in kinetic energy rather than the momentum equations. Last, this result can also be obtained by filtering the Eulerian kinetic energy equation directly.

Appendix C. Potential Energy

Vertical buoyancy transport connects potential and kinetic energies, and this is introduced into (3) by adding and subtracting wp_z , which yields

$$K_t + \nabla \cdot \mathbf{u} K = -\nabla \cdot \mathbf{u} p + wb - \epsilon + \nabla \cdot \nu \nabla K \quad (\text{C.1})$$

where b is buoyancy and the velocity is fully three dimensional. For a linear equation of state, the quantity wb can be related to $h = -bz$ via

$$h_t + \nabla \cdot \mathbf{u} h = -wb + \nabla \cdot \kappa \nabla h + 2\kappa b_z \quad (\text{C.2})$$

where κ is diffusivity.

For a nonlinear equation of state, the choice for h of ‘dynamic enthalpy’ (Young (2010))

$$h = \int_{P_o}^P \frac{b}{g\rho_o} dP \quad (\text{C.3})$$

where ρ_o is a reference density, g gravity, $P = -\rho_o g z$ is static pressure and P_o is a reference surface pressure, leads to a generalized form of (C.2). This equation involves a lot of terms and is not written down here.

Note that (C.2) can be rewritten as

$$h_t + \nabla \cdot \mathbf{u} h - \nabla \cdot \kappa \nabla h = \chi \quad (\text{C.4})$$

where $\chi = -wb + 2\kappa b_z$ represents the ‘sources’ of potential energy. The form of (C.4) is identical to that of (4), so the previous analysis and results all apply to potential energy. If the fluid is modeled assuming identical diffusivity and viscosity (i.e. a Prandtl number of 1), the analysis in this paper can be applied to the sum of kinetic and potential energy. In any case, potential energy can always be analyzed separately from kinetic and the two connected through their common quantity, wb .

Appendix D. Isopycnal fluids

If one works in a layered model, as the example in the main part of the paper, the momentum equations change slightly so, for example, the zonal momentum equation becomes

$$u_t + uu_x + vu_y - fv = -M_x - \frac{\nabla \cdot F^x}{h} \quad (\text{D.1})$$

where M is the Montgomery potential

$$M = p - bz \quad (\text{D.2})$$

and F^x represents the viscous fluxes of zonal momentum. Notation is otherwise the same as in (1). The kinetic energy equations formed from these momentum equations, employing the usual statements for viscous fluxes, is

$$K_t + uK_x + vK_y = -uM_x - vM_y - \epsilon + \frac{1}{h} \nabla_h \cdot h\nu \nabla_h K \quad (\text{D.3})$$

where h is layer thickness and the subscript ‘h’ denotes ‘horizontal’. Following the Green’s function formalism eventually leads to

$$K(\mathbf{x}_o, t_o) = \int_{\mathbf{x}} G(\mathbf{x}, 0; \mathbf{x}_o, t_o) K(\mathbf{x}, 0) d\mathbf{x} + \int_t \int_{\mathbf{x}} G(\mathbf{x}, 0; \mathbf{x}_o, t_o) R(\mathbf{x}, 0) d\mathbf{x} dt \quad (\text{D.4})$$

where

$$R = -uM_x - vM_y - \epsilon \quad (\text{D.5})$$

and

$$G_t + \nabla \cdot \mathbf{u}_h G = \nabla_h \cdot \nu h \nabla_h \frac{G}{h} - \delta(\mathbf{x} - \mathbf{x}_o, t - t_o) \quad (\text{D.6})$$

These are the equations used in the analysis of the MOM6 results.

References

- Aluie, H., Hecht, M., Vallis, G., 2018. Mapping the energy cascade in the North Atlantic Ocean: The coarse-graining approach. *Journal of Physical Oceanography* 48, 225–244.
- Arbic, B., Muller, M., Richman, J., Shriver, J., Morten, A., Scott, R., Serazin, G., Penduff, T., 2014. Geostrophic turbulence in the frequency-wavenumber domain: Eddy-driven low-frequency variability. *Journal of Physical Oceanography* 44, doi:10.1175/JPO-D-13-054.1.
- Arbic, B., Scott, R., Flierl, G., Morten, A., Richman, J., Shriver, J., 2012. Nonlinear cascades of surface oceanic geostrophic kinetic energy in the frequency domain. *Journal of Physical Oceanography* 42, 1577–1600.
- Berloff, P., McWilliams, J., 1999. Large-scale, low-frequency variability in wind-driven ocean gyres. *Journal of Physical Oceanography* 29, 1925–1949.
- Charney, J., 1971. Geostrophic turbulence. *Journal of Atmospheric Science* 28, 1087–1095.

- Dijkstra, H., Molemaker, M., 1999. Imperfections of the North Atlantic wind-driven ocean circulation: Continental geometry and windstress shape. *Journal of Marine Research* 57, 1–28.
- Ferrari, R., Wunsch, C., 2009. Ocean circulation kinetic energy - reservoirs, sources and sinks. *Ann. Rev. Fluid Mech.* 41, 253–282.
- Fjortoft, R., 1953. On the changes in the spectral distribution of kinetic energy for twodimension, nondivergent flow. *Tellus* 5, 225–230.
- Holland, W., 1978. The role of mesoscale eddies in the general circulation of the ocean - numerical experiments using a wind-driven quasi-geostrophic model. *Journal of Physical Oceanography* 8, 363–392.
- Kraichnan, R., 1967. Inertial ranges in two-dimensional turbulence. *The Physics of Fluids* 10, doi.org/10.1063/1.1762301.
- Nagai, T., Tandon, A., Kunze, E., Mahadevan, A., 2015. Spontaneous generation of near-inertial waves by the Kuroshio Front. *Journal of Physical Oceanography* 45, 2381–2406.
- Scott, R., Arbic, B., 2007. Spectral energy fluxes in geostrophic turbulence: Implications for ocean energetics. *Journal of Physical Oceanography* 37, 673–688.
- Scott, R., Wang, F., 2005. Direct evidence of an oceanic inverse kinetic energy cascade from satellite altimetry. *Journal of Physical Oceanography* 35, 1650–1666.
- Shakespeare, C., Hogg, A., 2017. Spontaneous surface generation and interior amplification of internal waves in a regional-scale ocean model. *Journal of Physical Oceanography*, doi:10.1175/JPO-D-16-0188.1.
- Wunsch, C., Ferrari, R., 2004. Vertical mixing, energy, and the general circulation of the oceans. *Ann. Rev. Fluid Mech.* 36, doi:10.1146/annurev.fluid.36.050802.122121.
- Young, W., 2010. Dynamic enthalpy, conservative temperature, and the seawater boussinesq approximation. *Journal of Physical Oceanography* 40, 394–400.