

Supporting Information for ”Spaceborne evidence that ice-nucleating particles influence cloud phase”

Tim Carlsen¹, Robert O. David¹

¹Department of Geosciences, University of Oslo, Oslo, Norway

Contents of this file

- Figures S1 to S3

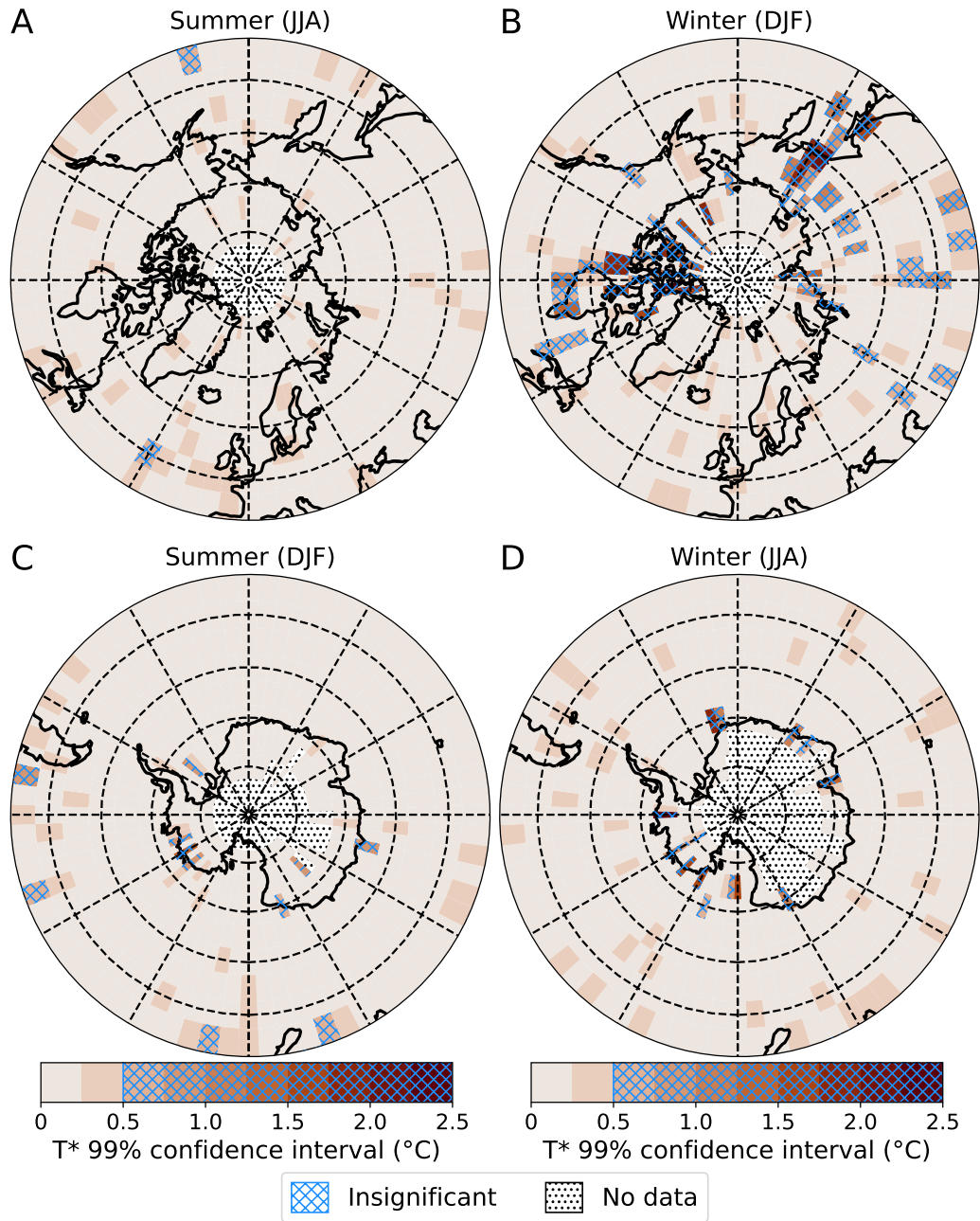


Figure S1. 99 % confidence interval (CI) of T^* based on bootstrapping ($N = 100$) for the Arctic (Panel A: summer JJA, Panel B: winter DJF) and Antarctica (Panel C: summer DJF, Panel D: winter JJA). Grid cells with an insignificant T^* value are hatched in blue (CI < 0.5 °C). Grid cells with no data are marked with dots.

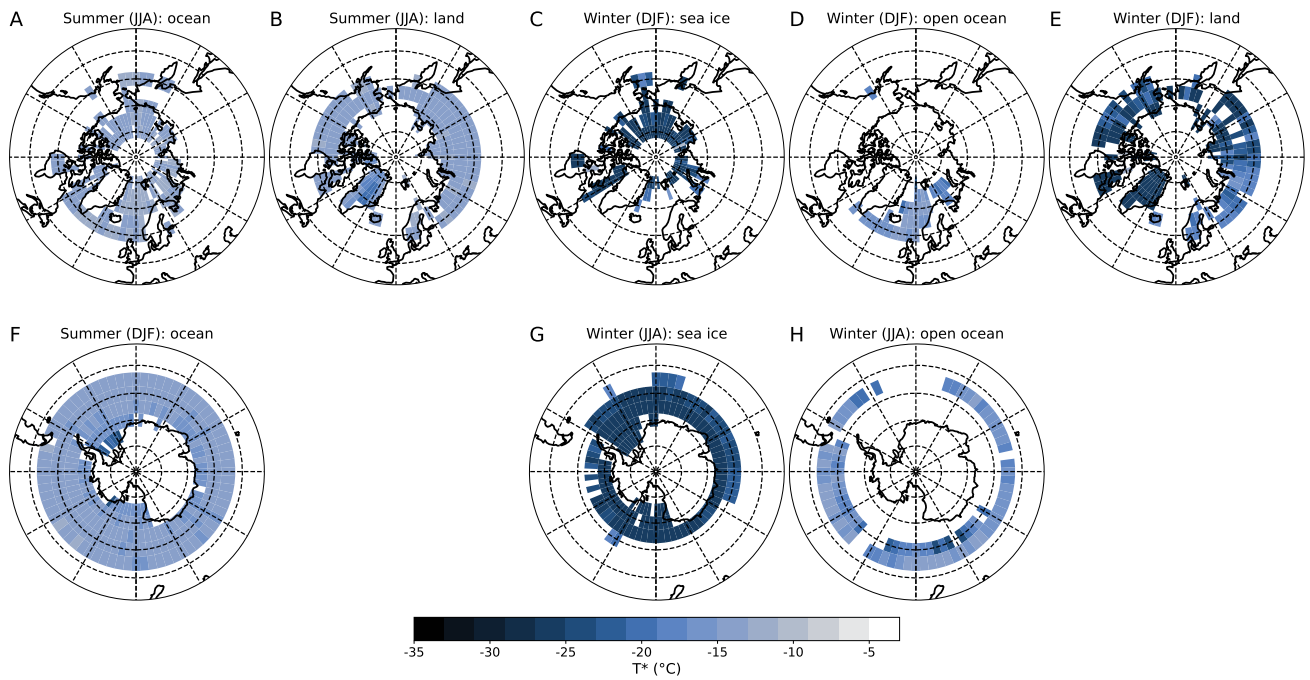


Figure S2. Masks for the area-weighted averaging of significant T^* values for different regions and seasons. These masks are used in the calculation of the values in Table S1. For Arctic: (A) summer (JJA) ocean, (B) summer (JJA) land, (C) winter (DJF) sea ice, (D) winter (DJF) open ocean, (E) winter (DJF) land. For Antarctica: (F) summer (DJF) ocean, (G) winter (JJA) sea ice, (H) winter (JJA) open ocean.

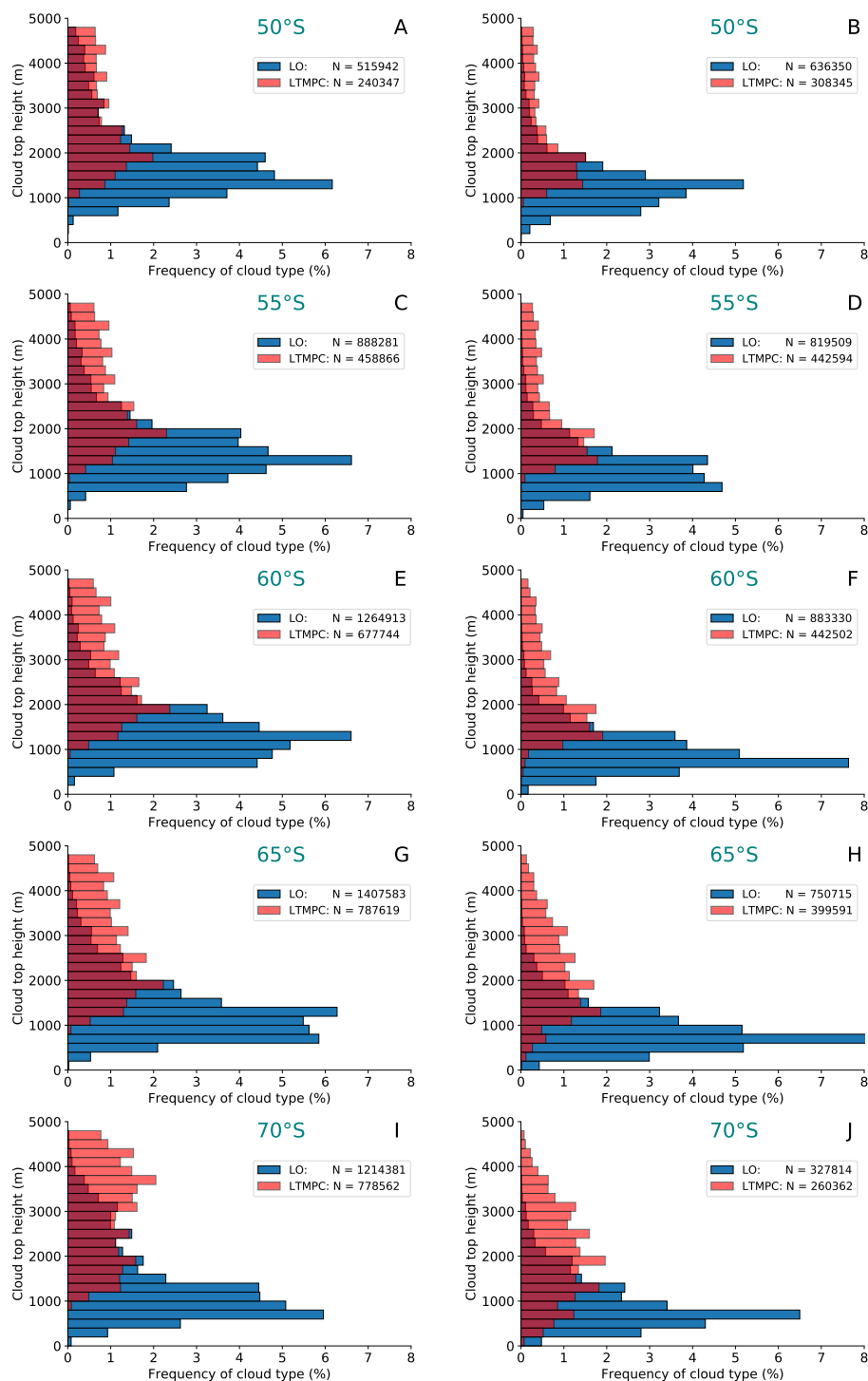


Figure S3. Frequency of occurrence of LO (blue) and LTMPCs (red) as a function of cloud top height summed over 5°-latitudinal bands with a midpoint at 50°S, 55°S, 60°S, 65°S, and 70°S for Austral Summer (DJF, panels: A, C, E, G, I) and winter (JJA, panels: B, D, F, H, J) normalized to all measured single-layer clouds in the given season.