



# JOEL SCHIFFER

---

Defining the Main Central Thrust in the Hazara  
Syntaxis, Northern Pakistan: Evidence from New  
Isotopic Data

Joel Schiffer<sup>1</sup>, Delores Robinson<sup>1</sup>, Shah Faisal<sup>2</sup>

<sup>1</sup>Department of Geological Sciences and Center for Sedimentary  
Basin Studies, University of Alabama

<sup>2</sup>National Centre of Excellence in Geology, University of Peshawar

16 December 2021

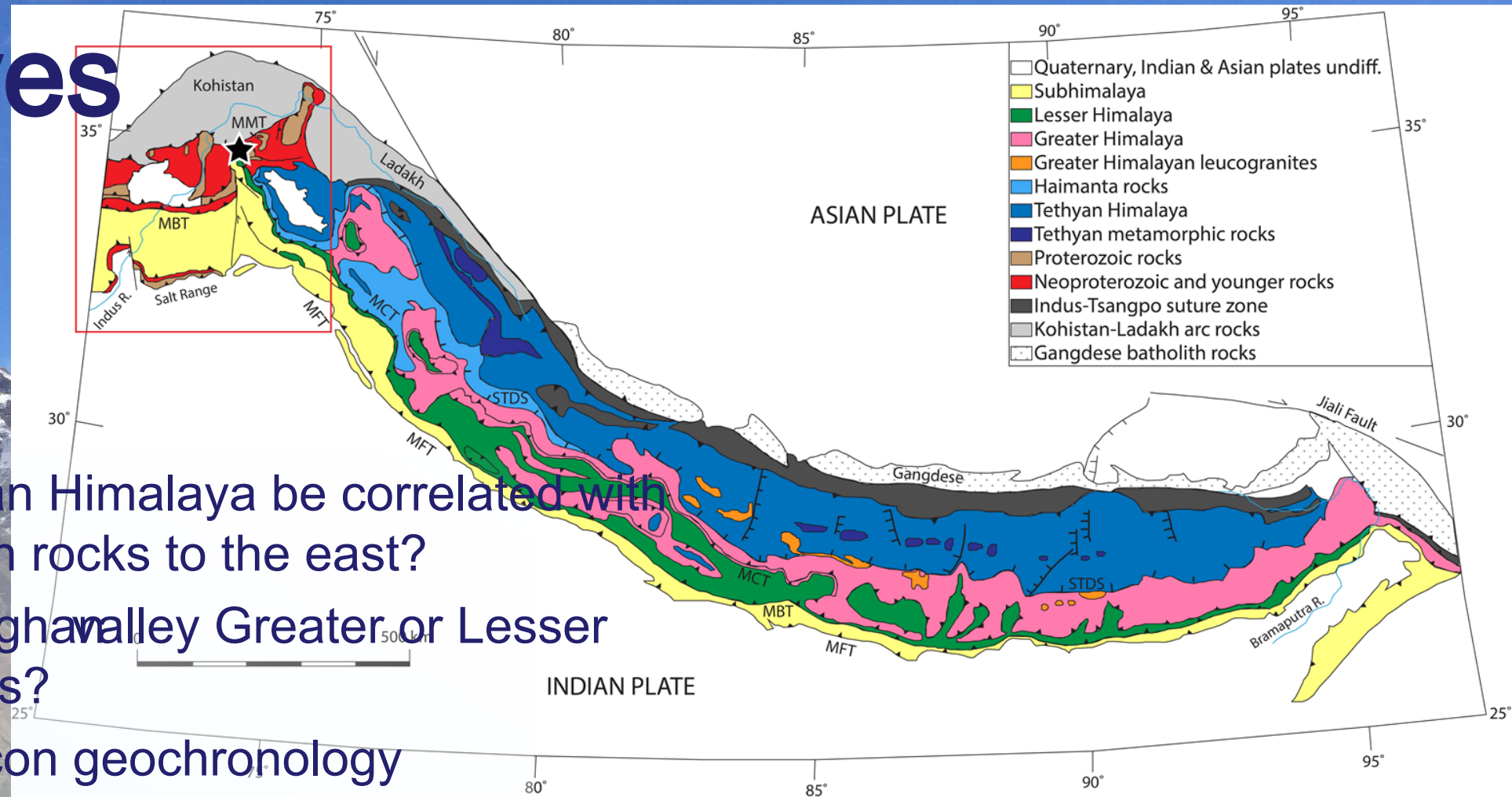


THE UNIVERSITY OF  
**ALABAMA**<sup>®</sup>



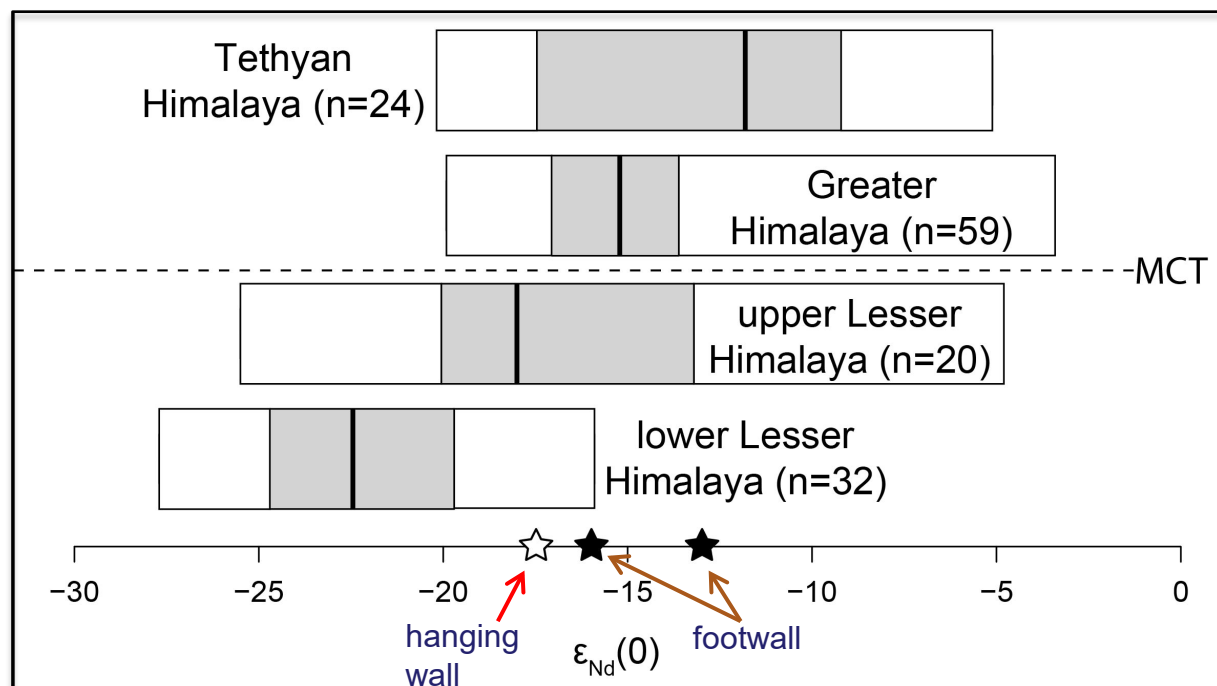
# Objectives

- Can the Pakistan Himalaya be correlated with other Himalayan rocks to the east?
- Are rocks in the Kaghan valley Greater or Lesser Himalayan rocks?
  - Detrital zircon geochronology
  - Whole rock epsilon Nd (isotopic values)
- Can the Main Central thrust be traced through the syntaxis?

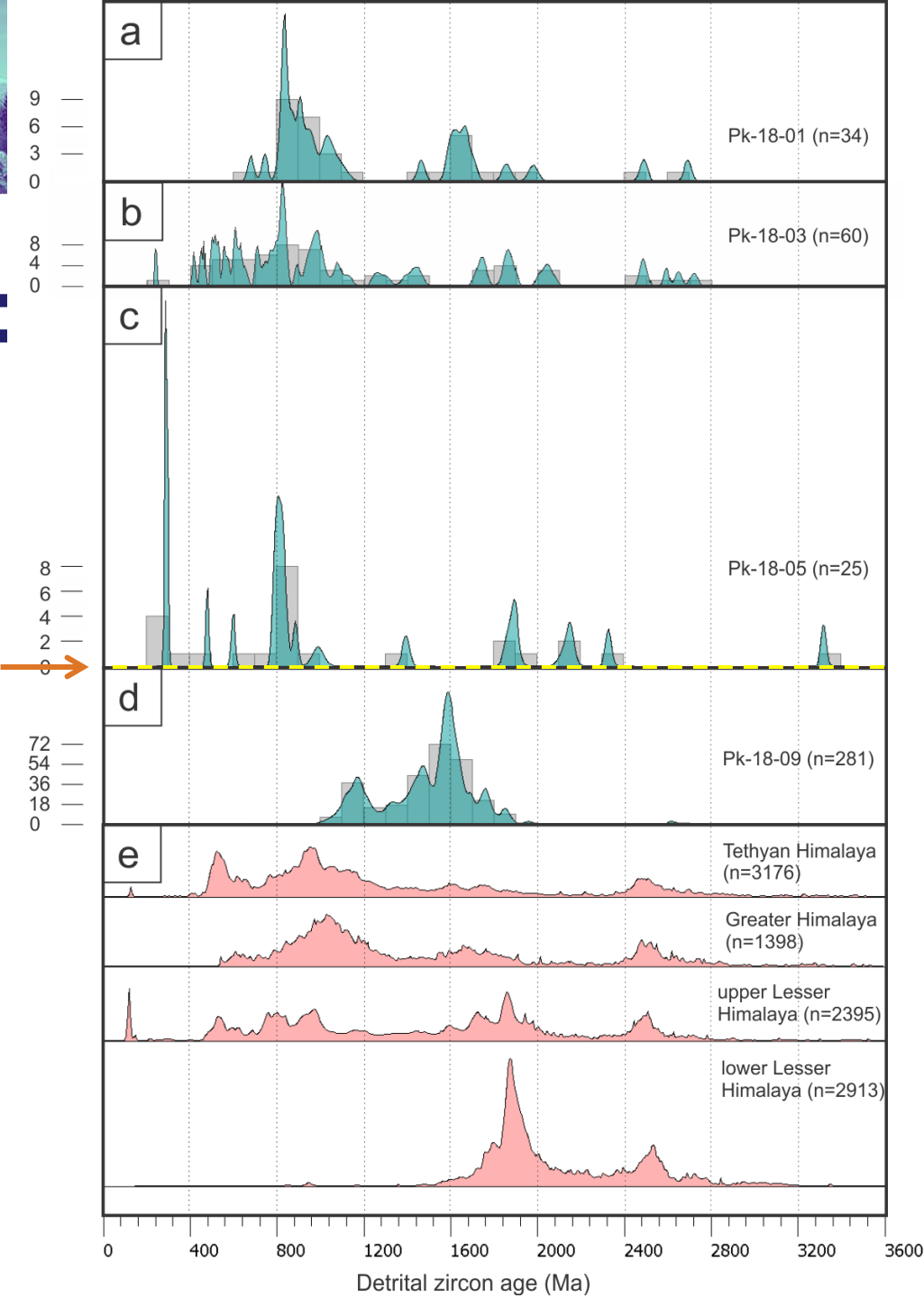




# THESE ROCKS ARE DIFFERENT



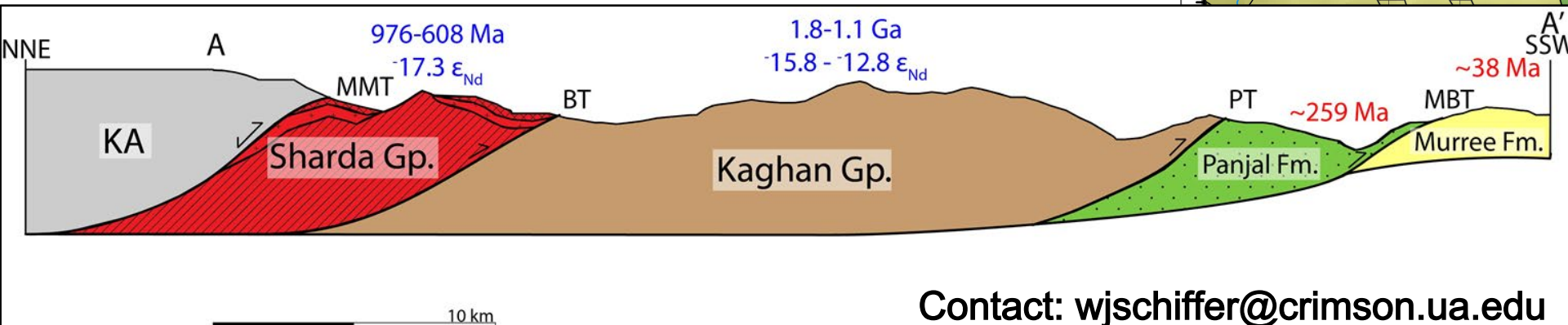
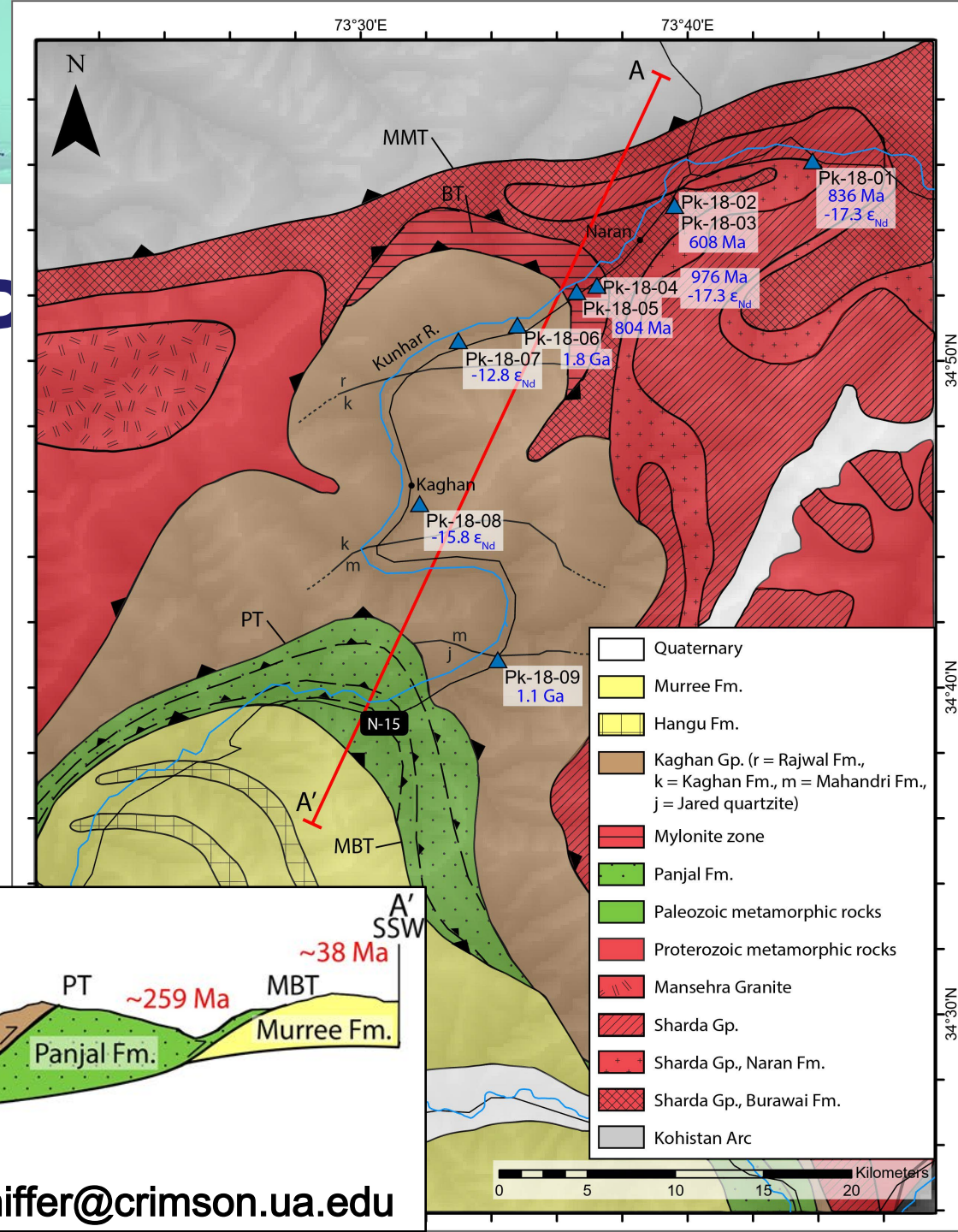
Batal thrust





# PRELIMINARY INTERP

- Rocks of the Kaghan valley are distinct from TH, GH, or LH rocks to the east
- Neither fault (Batal, Panjal) can be defined as the MCT
- Pakistan Himalaya rocks were deposited in a paleogeographic setting separate from the Indian craton(?), and require a separate tectonostratigraphic framework



Contact: [wjschiffer@crimson.ua.edu](mailto:wjschiffer@crimson.ua.edu)