

Improving Forecasting Ability of GITM using Data-driven Model Refinement

¹Brandon M. Ponder, ¹Aaron J. Ridley, ²Ankit Goel, ³D. S. Bernstein

¹Department of Climate and Space Sciences and Engineering, University of Michigan, Ann Arbor, MI USA

²Department of Mechanical Engineering, University of Maryland, Baltimore County, Baltimore, MD USA

³Department of Aerospace Engineering, University of Michigan, Ann Arbor, MI USA

Corresponding author: B. M. Ponder, bponder@umich.edu

Abstract

At altitudes below about 600 km, satellite drag is one of the most important and variable forces acting on a satellite. Neutral mass density predictions in the upper atmosphere are therefore critical for (1) designing satellites; (2) performing adjustments to stay in an intended orbit; and (3) collision avoidance maneuver planning. Density predictions have a great deal of uncertainty, including model biases and model misrepresentation of the atmospheric response to energy input. These may stem from inaccurate approximations of terms in the Navier-Stokes equations, unmodeled physics, incorrect boundary conditions, or incorrect parameterizations. Two commonly parameterized source terms are the thermal conduction and eddy diffusion. Both are critical components in the transfer of the heat in the thermosphere. Determining how well the major constituents (N_2 , O_2 , O) are as heat conductors will have effects on the temperature and mass density changes from a heat source. This work shows the effectiveness of using the retrospective cost model refinement (RCMR) technique at removing model bias caused by different sources within the Global Ionosphere Thermosphere Model (GITM). Numerical experiments, Challenging Minisatellite Payload (CHAMP) and Gravity Recovery and Climate Experiment (GRACE) data during real events are used to show that RCMR can compensate for model bias caused by both inaccurate parameterizations and drivers. RCMR is used to show that eliminating model bias before a storm allows for more accurate predictions throughout the storm.

1 Introduction

Orbit estimation of drag along a satellite path for collision avoidance is growing in importance due to the increased risk of collisions as more objects are being launched into low Earth orbit. Satellites are expensive to build, launch and maintain [Saleh *et al.*, 2004] and there is an increasing collision risk posed by over twenty thousand pieces of space debris larger than 10 cm^3 [Garcia, 2021]. In response to the threat of collisions, the Joint Space Operations Center (JSpOC) continuously monitors orbiting objects' positions and velocities. From its database, it computes a probability of collision between two bodies and will issue a Conjunction Data Message (CDM) to the mission operator for further action [Hejduk and Frigm, 2015], [Bussy-Virat *et al.*, 2018]. Then a collision avoidance maneuver could be performed, costing time of inactivity and fuel.

There are underlying assumptions to the advanced computing technique of predicting a collision. One assumption is the drag force estimation used to solve the kinematic

equations. The acceleration (\underline{a}) experienced due to satellite drag is proportional to the ratio of surface area (A) to mass (m) of the spacecraft, coefficient of drag (c_D), the atmospheric density (ρ) and the velocity, relative to a rotating atmosphere, squared (v):

$$\underline{a} = -\frac{1}{2} \frac{A}{m} c_D \rho \underline{v}^2 \hat{v} \quad (1)$$

where density is the largest uncertainty in this equation.

Attitude control is a related topic that requires properly estimating the drag-induced torques on a satellite to control its orientation. This could be important for instrumentation to function properly. Part of the attitude control problem is bounding torques to ensure systems do not get overwhelmed. Alternatively, over-engineering a powerful attitude control system costs extra money. The accuracy of torque prediction is reliant on low-error density estimation too. *Moorthy et al.* [2021] describes the importance of attitude control and the potential impact to expand our ability to explore extremely low Earth orbits (150-250 km). This region of Earth's atmosphere is under-explored due to the large drag force causing short expected lifetimes.

Accurately predicting the density in the thermosphere is a difficult task and atmospheric models are often called upon to make these density-driven drag estimations, but can be inaccurate by 20% ([*Kuang et al.*, 2014], [*Marcos*, 1990], [*Bruinsma et al.*, 2004]). The errors in the prediction are amplified during a geomagnetic storm, largely due to poor density estimation [*Pachura and Hejduk*, 2016]. Drag inaccuracies can create positioning errors on the order of 10 km after just one day. In a short period of time, the satellites' trajectory can change enough such that JSpOC may need to reacquire them.

One of the models available to estimate density is NRLMSISE-00 (referred to as MSIS). MSIS is an empirical model ([*Hedin*, 1983], [*Hedin*, 1987], [*Hedin*, 1991], [*Picone et al.*, 2002]) that uses a spherical harmonic fitting of ground-based and satellite measurements to estimate neutral densities and temperatures of the thermosphere for given solar conditions (F10.7) and geomagnetic activity (A_p). Empirical models incorporate data from remote observations so they are able to capture background neutral densities well, but do not have the same success during a solar storm due to limited time periods of enhanced activity. *Wang et al.* [2022] analyzed 265 storms, showed that MSIS under-predicted the density during storms, and fit coefficients to improve MSIS's peak density prediction during weak, moderate and intense storms.

The Jacchia-Bowman 2008 Empirical Thermospheric Density Model (JB2008) [Bowman *et al.*, 2008] is an empirical model that estimates total mass density. JB2008 is a series of improvements upon the Jacchia 70 model [Jacchia, 1970] changing the input for the geomagnetic indices (from A_p to D_{st}) and adding to the input for the solar indices using orbit-based sensor measurements of solar data in the EUV and far EUV (FUV) wavelengths. As part of the change from Jacchia 70, Bowman [2004] concluded that a Fourier time series and an altitude dependent, quadratic function could accurately replace the existing Jacchia 70 density functions used to compute the semidiurnal density variation. Bowman *et al.* [2006] introduced EUV and FUV solar indices into their temperature equation, replacing the standard Jacchia temperature equation. The accumulation of these changes led to lower standard deviation in errors, particularly during solar minimum conditions and during major geomagnetic storms.

There are two common issues with models: (1) bias during background conditions where mean densities from the model differ from mean measurements over a period of several days or longer and (2) enhanced errors over periods of a couple of days, driven by space weather events like storms. There are many ways people have tried to address these issues of poor density estimation.

The High Accuracy Satellite Drag Model (HASDM) [Storz *et al.*, 2005] is an extension of JB2008 used by the US Space Force Combined Space Operations Center which uses observed drag effects from approximately 75 Earth-orbiting spheres to compute diurnal and semidiurnal variations to the thermosphere density. Doornbos *et al.* [2008] has done work with two-line element (TLE) data to directly create altitude-dependent multiplication factors to scale the densities of empirical models. Brandt *et al.* [2020] created the Multifactor Optimization Algorithm (MOA) which similarly uses TLE data to incrementally adjust the drivers for MSIS within the orbital propagator (SpOCK) [Bussy-Virat *et al.*, 2018]. MOA adjusts the drivers of MSIS when MSIS has a large bias or misrepresents a storm to bring SpOCK-predicted orbits in line with TLEs from several small satellites. Lastly, [Kalafatoglu Eyiguler *et al.*, 2019] showed that debiasing a model's background density prior to a storm may lead to improved performance for some models and recommends a few calculations for assessing storm-time performance.

Physics-based models estimate the thermosphere state variables using approximations of the Navier-Stokes equations. The idea is that correctly implemented physics could

more accurately reproduce typical and highly-variable thermosphere conditions as observed during storms. Coupled Thermosphere Ionosphere Model (CTIM) [Fuller-Rowell and Rees, 1980], Thermosphere Ionosphere Electrodynamics General Circulation Model (TIEGCM) [Richmond *et al.*, 1992] and Global Ionosphere Thermosphere Model (GITM) [Ridley *et al.*, 2006] are examples of Earth-based, physics models. The different numerical approximations, source terms included (or not included), and drivers in each model generates different temperatures, wind structures and densities. TIEGCM and CTIM use the hydrostatic assumption, whereas GITM does not make the same hydrostatic equilibrium assumption and solves a more complete vertical momentum and energy equation, but takes significantly longer to run. GITM makes use of the Flare Irradiance Spectral Model (FISM) [Chamberlin *et al.*, 2008] fluxes to better represent the solar EUV entering the atmosphere.

This study presents work on debiasing the background density in GITM using observational data. It also shows the impact of debiasing a model prior to a geomagnetic storm using satellite measurements and the MSIS model.

1.1 The Global Ionosphere Thermosphere Model (GITM)

Understanding the parameters that affect the thermosphere's neutral density are critical for improving physics-based models like GITM. GITM is a 3D spherical model that is used for Earth [Ridley *et al.*, 2006], Mars [Bougher *et al.*, 2015] and Saturn's moon Titan [Bell *et al.*, 2010]. In this study, the resolution of GITM was 2° latitude and 4° in longitude.

Ridley *et al.* [2006] explains the capabilities of the model, including the chemistry and numerical schemes. The vertical energy equation in GITM, including source terms, is [Ridley *et al.*, 2006]:

$$\frac{\partial \mathcal{T}}{\partial t} + u_r \frac{\partial \mathcal{T}}{\partial r} + (\gamma - 1) \mathcal{T} \left(\frac{2u_r}{r} + \frac{\partial u_r}{\partial r} \right) = \frac{k}{c_v \rho \bar{m}_n} Q \quad (2)$$

where the first term is the time rate of change for the normalized, neutral temperature, $\mathcal{T} = kT/\bar{m}_n$. The second term is the advection of temperature gradients, while the third term is the adiabatic heating, which is a result of the divergence of the velocity. This is only the vertical component which depends on the vertical velocity, u_r , radius of the Earth, r , and the temperature gradient. γ is the adiabatic index that is attached to the

change in energy from the expansion of the gas. On the right-hand side, c_v is the specific heat, k is Boltzmann's constant, ρ is the mass density, and \bar{m}_n is the mean mass of the neutrals. The various source terms are given by:

$$Q = Q_{EUV} + Q_{NO} + Q_O + \frac{\partial}{\partial r}((\kappa_c + \kappa_{eddy}) \frac{\partial T}{\partial r}) + \sum_i n_i m_i \sum_n \frac{\nu_{in} [3k(T_n - T_i) + m_n(v - u)^2]}{m_i + m_n} \quad (3)$$

where: Q_{EUV} is the contribution from the solar extreme ultraviolet irradiance; the Q_{NO} and Q_O terms are the cooling to space from the 5.3 μm and 63 μm bands respectively. The last term is the collisional frictional heating and heat transfer between ions and neutrals. This is a function of the ion density (n_i), mass of the ion (m_i), mass of the neutrals (m_n), the ion-neutral collision frequency (ν_{in}), the ion velocity (v_i), neutral velocity (u_n), ion temperature (T_i) and the neutral temperature (T_n). Finally, the fourth term is the thermal conductivity, where κ_{eddy} and κ_c are the conductivity coefficients due to eddy diffusion and molecular heat conductivity respectively, and is the focus of this study.

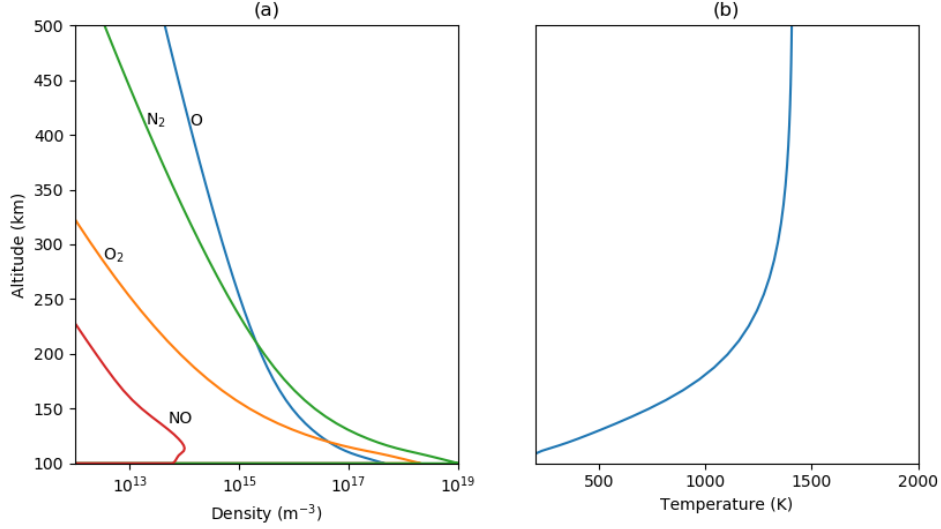
1.2 Thermal Conductivity in the Upper Atmosphere

Thermal conductivity uncertainty is a serious issue in physics-based models ([Banks and Kockarts, 1973], [Pawlowski and Ridley, 2009], [Schunk and Nagy, 2004]). Most of the literature describes thermal conductivity in a laboratory setting where it is expressed as a function of temperature alone for specific species [Vargaftik *et al.*, 1993]. The theoretical expression for the thermal conductivity coefficient (κ_c) are complex and so it has been useful to simplify the coefficient to be a parameterization ([Banks and Kockarts, 1973], [Schunk and Nagy, 2004]) as:

$$\kappa_c = \sum_{i=O, O_2, N_2} \left[\frac{N_i}{N_{total}} \right] A_i T^s \quad (4)$$

where N_i/N_{total} is a weighting factor by number density of each neutral species, T is the thermosphere temperature, A_i and s are species specific thermal conductivity coefficients to fit the total conductivity as needed. The summation includes the three species with the largest concentrations in the thermosphere. From Figure 1, above about 200 km, O is a dominant neutral species whereas in the lower thermosphere O_2 and N_2 densities are more prevalent and must be considered in the contribution to the heat exchange process. The temperature profile shows that above about 250 km, the atmosphere is roughly isothermal, so the conduction term can be quite small. This is the region where O is

137 dominant. This implies that the N_2 term in the thermal conductivity is probably a more
 138 important term since N_2 is dominant below ~ 250 km where the vertical temperature
 139 gradient is largest.



126 **Figure 1.** (a) Globally averaged atmosphere constituents and (b) globally averaged temperature in the ther-
 127 mosphere from GITM on September 26th, 2002. This time period is representative of solar max conditions
 128 ($F_{10.7} \approx 180$) and is used in some of the tests performed in later sections.

Pavlov [2017] gives approximations from tabulated values in *Vargaftik et al.* [1993] for thermal conduction (denoted as λ in *Pavlov* [2017]) experiencing pressures much less than 0.1 MPa in temperature ranges of 160 - 2500 K for N_2 and 160 - 1500 K for O_2 . The full expressions are:

$$\kappa_{N_2} = -3520 + 720.5T^{0.5} - 41.93T + 1.613T^{1.5} - 0.02685T^2 + 1.665 \times 10^{-4}T^{2.5} \quad (5)$$

$$\kappa_{O_2} = -3169 + 735.7T^{0.5} - 53.83T + 2.583T^{1.5} - 0.05325T^2 + 4.083 \times 10^{-4}T^{2.5} \quad (6)$$

$$\kappa_O = 46.7(1 + 2.228 \times 10^{-5}T - 5.545 \times 10^{-9}T^2)T^{0.77} \quad (7)$$

144 Figure 2 shows the *Pavlov* [2017] values of κ_{N_2} , κ_{O_2} , κ_O , as well as the corresponding
 145 *Schunk and Nagy* [2004] conductivities (assuming $s = 0.75$). In the bottom subplot, "best
 146 fit" lines are shown using the same parameterization scheme in (4). The estimation of the

coefficients and exponent in the parameterization are derived from data and theoretical expressions of the thermal conductivity of individual gases from [Hilsenrath, 1960], [Reid et al., 1977], [Lide, 1997], [Barlier et al., 1969] and [Banks and Kockarts, 1973]. While Vargaftik et al. [1993] describes more complex expressions that best fit to an exponent close to 0.8. Although the parameterizations of the atomic oxygen, O , and nitrogen, N_2 , seem to match fairly well, there is a great deal of discrepancy for the estimation of the O_2 .

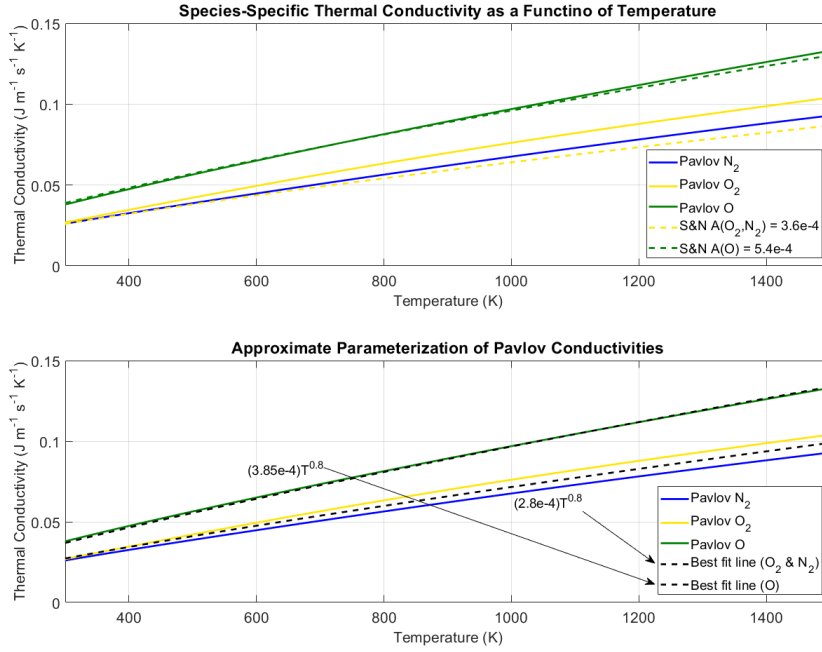


Figure 2. Different species-specific thermal conductivities plotted as a function of temperature with differing definitions of the suggested parameterization. Top: Pavlov and Schunk and Nagy parameterized species-specific conductivities. Bottom: Best fit lines for the Pavlov species-specific curves with the form $A_i T^s$.

As described in Pawlowski and Ridley [2009], model bias can originate from incorrectly defined parameters like the thermal conductivity, eddy diffusion, or photoelectron heating efficiencies. Certain quantities such as the eddy diffusion, and lower boundary density and temperature affect model bias such that the best modeled physics equations can still result in inaccurate mass density calculations. It is therefore quite difficult to identify the cause of data-model comparison discrepancies.

For example, *Masutti et al.* [2016] explored a time period in which F10.7 increased over the course of several days and showed that GITM’s mass density at approximately 400 km altitude overresponded to this change. Overall, there was an underestimate of a mass density when F10.7 was low and an overestimate when F10.7 was high. Since GITM’s performance was a function of the solar irradiance, improved performance could possibly be captured through thermal conductivity adjustments based on solar activity, but may be possibly masking other incorrectly modeled physics.

The thermal conductivity is the focus of this study because its parameterization is a possible deficiency in GITM and it significantly changes the density results needed for orbit prediction. This is an opportunity to settle the discrepancy of parameterizations and compensate for neutral density model bias that may be caused by other incorrectly modeled physics, boundary conditions or drivers. For instance, inaccurate modeling of a term like the eddy diffusion coefficient could also influence neutral density results [*Qian et al.*, 2009]. Handling the eddy diffusion has been a topic of previous research in GITM ([*Goel et al.*, 2018], [*Malhotra et al.*, 2017]), but the eddy diffusion is a term that also controls the composition and ionospheric density due to the changed turbulent mixing and its inclusion in the continuity, vertical momentum and energy equations.

1.3 Manually Debiasing the Thermal Conductivity

This section outlines the need for debiasing models by describing an attempt to choose a single constant, thermal conductivity coefficient that allows GITM’s mass density to better match CHAMP observations. Nine runs with varying thermal conductivity coefficients (Table 1) were performed for each of six different time periods. For each run, the eddy diffusion coefficient was set to 500, and s was set to 0.69. The percent difference in mass density from CHAMP measurements and GITM calculations were examined. GITM was ran for ten days, but only the last five days of each run were used to allow GITM to reach a quasi-diurnally reproducible state before comparison. CHAMP and GITM densities were averaged over the orbital period (~ 90 minutes).

Contours of percent error for each time period are shown in Figure 3. The September 2002 and September 2004 time periods were selected to tune GITM, keeping the season and geomagnetic conditions similar, but allowing the solar activity to vary (see Table 2).

Run	A(O ₂ , N ₂)	A(O)
1	3.6	4.6
2	4.6	4.6
3	5.6	4.6
4	3.6	5.6
5	4.6	5.6
6	5.6	5.6
7	3.6	6.6
8	4.6	6.6
9	5.6	6.6

Table 1. The variety of inputs to thermal conductivity coefficients. Multiply $A(i)$ by 10^{-4} to yield $Jm^{-1}s^{-1}K^{-1}$.

Time period	F10.7
September 2002	184
February 2003	133
September 2004	92
August 2005	94
October 2005	80
September 2006	74

Table 2. F10.7 (solar flux units) values during the different time periods.

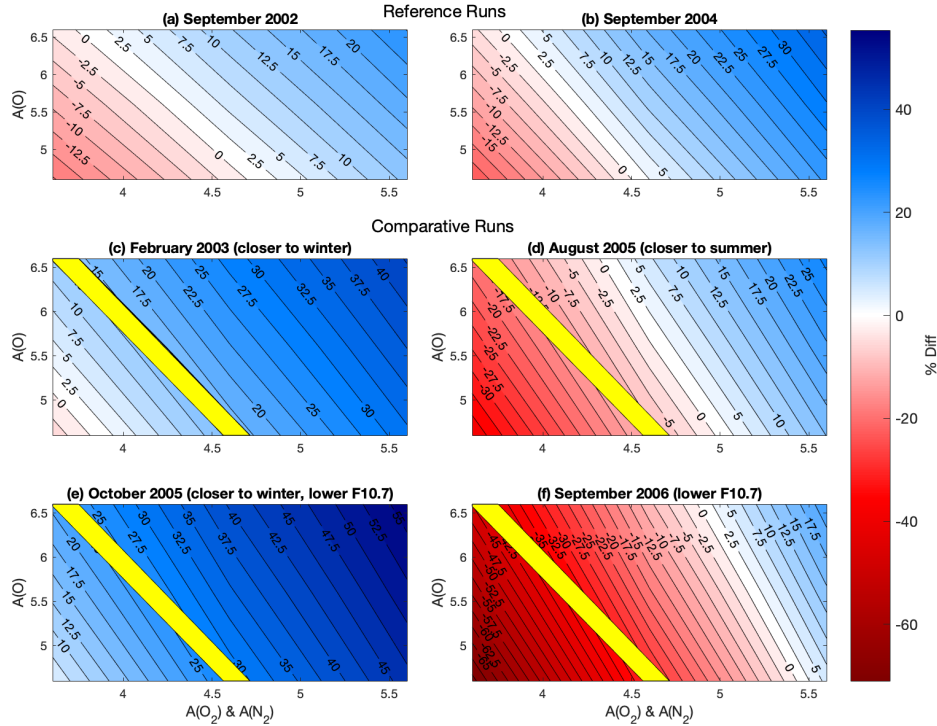


Figure 3. Contours of model errors as a function of thermal conductivity (molecular on x-axis, atomic on y-axis) for different time periods. The blue and red regions indicate GITM having mass densities lower and higher than CHAMP observed, respectively. Areas of white yield results similar mean densities to CHAMP. (a) and (b) are baseline runs to find suitable thermal conductivity coefficients. The yellow region in (c)-(f) are thermal conduction values that yield good results for both the reference runs to within 5%.

As the thermal conductivity is increased, the gradient in temperature in the lower thermosphere decreases. Since the lower boundary condition fixes the temperature, the temperature in the upper thermosphere must decrease. Pressure and density profiles are strongly controlled by the temperature, so as the temperature decreases, the density at a fixed altitude in the upper thermosphere also decreases. This means that the neutral density in GITM decreases as the thermal conductivity increases. Figure 3 shows that the molecular coefficient has a stronger effect than the atomic oxygen coefficient. This is because the thermal conductivity multiplies ∇T , which is largest in the lower thermosphere (~ 100 - 200 km), where the major species O_2 and N_2 are dominant (Figure 1).

Hence, the thermal conductivity in the lower thermosphere dictates the middle and upper thermosphere temperature and density.

The top two plots of Figure 3 indicate that, for these two intervals, there is a span of atomic and molecular coefficients that reduce the model bias to extremely low levels, even with different solar irradiance. However, when the study was expanded to include other seasons and other conditions, it became clear that no combination reduced the bias universally. Times outside of September 2002 and 2004 needed to be considered to see that this overlapping parameterization space does not provide unbiased results at different parts of the solar cycle. The yellow zone overlayed on each subplot is the parameter space from the September 2002 and 2004 runs where the error was within $\pm 5\%$ for both times. These yellow zones show that a debiased set of thermal conductivity parameters for one set of times do not necessarily reduce the error to zero for other time periods. The causes of this could stem from incorrect drivers (EUV, lower boundary condition, aurora, etc...) or incorrect physics (ion variability, small-scale structures, turbulent heating, etc...). This is the reason an automated debiasing mechanism is needed. The difference in performance to estimate other state variables (aside from the neutral density) between these two sets of thermal conductivity candidates was not studied in this work.

2 Retrospective Cost Model Refinement (RCMR)

Retrospective Cost Model Refinement (RCMR) is a technique developed for parameter estimation in nonlinear systems [Morozov *et al.*, 2011]. The technique is a variation of retrospective cost adaptive control (RCAC) that was primarily developed for adaptive control applications in aerospace engineering [Santillo and Bernstein, 2010]. In this work, RCMR is used to estimate thermal conductivity coefficients in a system modeled by Navier-Stokes partial differential equations. RCMR minimizes a cumulative cost function that is based on the difference between the density computed self-consistently by GITM and the density specified externally, such as that measured by a real satellite or estimated by a different model. This technique has been applied for estimation of (1) the eddy diffusion coefficient using total electron content (TEC) as the comparison variable [Goel *et al.*, 2018], (2) NOx cooling using simulated space-based measurements [D'Amato *et al.*, 2013], (3) the photoelectron heating coefficient based on real satellite measurements [Burrell *et al.*, 2015] and, (4) the thermal conductivity coefficients using simulated density measurements [Goel *et al.*, 2020]. Each of these studies successfully estimated the corre-

sponding unknown parameter using RCMR. For a more complete description of RCMR, refer to *Goel et al.* [2020].

Figure 4 shows the block diagram used to estimate the unknown parameter within RCMR. As shown by the top block in Figure 4, the external drivers, including the solar EUV, frictional heating and auroral precipitation, force the real thermosphere's density, ρ . Thermal conductivity serves to move the energy vertically. When trying to reproduce nature's physics with a model (GITM), there are assumptions that try to emulate the true relationships. The empirical formulations, boundary conditions and other model necessities result in error accumulation. This is seen when comparing the model estimated density, $\hat{\rho}$ with in-situ measurements, as shown in Figure 3.

Reducing the error (z) is ideally done by correctly implementing equations that accurately and completely capture all dynamics, boundary conditions and drivers within the model. Low error could also be obtained by incorrect physics within the models that cancel each other out, inadvertently matching the measurements. This can occur when multiple incomplete physics terms compensate for each other. For example, having too low solar EUV heating along with too high frictional heating at high-latitudes could result in an orbit-averaged mass density that is more or less correct. In the case of RCMR, intentionally adjusting thermal conductivity coefficient(s) changes the error by altering the thermal balance between sources and sinks.

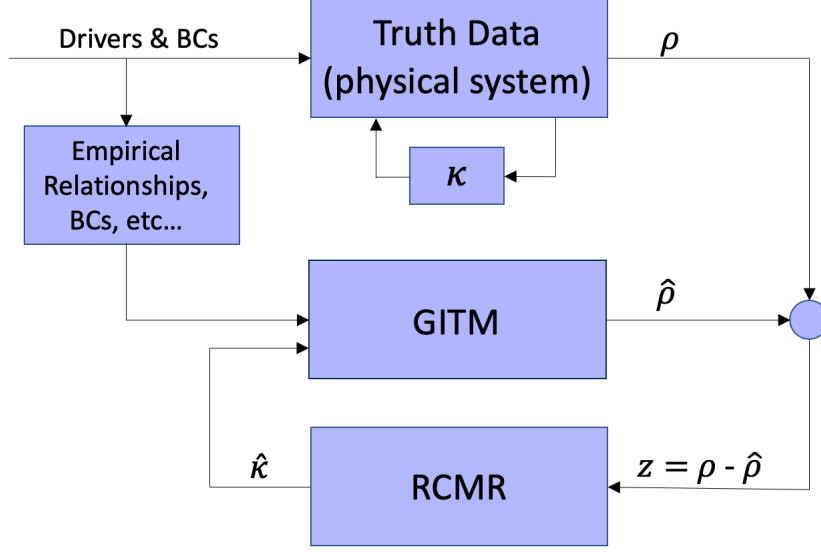


Figure 4. Modified block diagram from *Goel et al. [2020]* to illustrate the RCMR process.

In Figure 4, the top block represents the true physical system with real drivers and boundary conditions. In the real system, κ is driven by the states and dynamics, making a complex, nonlinear system. GITM approximates the drivers and boundary conditions as well as approximating the dependence of κ on the system state as described above (i.e. $\kappa = \sum A_i T^s$). RCMR takes the difference between the "actual" ρ and the GITM-estimated $\hat{\rho}$, and alters the κ (through the values of A_i and/or s) to minimize the difference.

In order to validate the integration of RCMR within GITM, RCMR was used to estimate κ ($A(O_2, N_2)$) using simulated truth density data obtained from a GITM simulation with a known value of κ . The density data was recorded and serves as the satellite measurements. Next, GITM was re-run with an intentionally incorrect $A(O_2, N_2)$ and RCMR updated the estimate $A(O_2, N_2)$ using the simulated truth density data. If RCMR was implemented correctly, RCMR's estimated $A(O_2, N_2)$ would converge to the true value of $A(O_2, N_2)$ used to generate the simulated truth data, validating the technique. When this is true, it is a good indication that when actual truth data (i.e. CHAMP, GRACE, MSIS) is used, the convergence will provide the real thermosphere thermal conductivity coefficients.

3 Results

3.1 Automating the Model Debiasing Process via RCMR

RCMR estimates the thermal conductivity coefficients using density measurements from the CHAMP and GRACE satellites as well as Naval Research Laboratory's (NRL) Mass Spectrometer and Incoherent Scatter Radar (MSIS) empirical model [Picone *et al.*, 2002]. In order to implement this, GITM was ran independent of RCMR to obtain global density values from September 16-26, 2002. The thermal conductivity coefficients of $A(O) = 4.6 \times 10^{-4} \text{ Jm}^{-1}\text{s}^{-1}\text{K}^{-1}$, $A(O_2, N_2) = 4.6 \times 10^{-4} \text{ Jm}^{-1}\text{s}^{-1}\text{K}^{-1}$ and the exponent $s = 0.69$ were used. In comparison to CHAMP satellite data, this provided a low-biased mass density result (Figure 3a).

The orbit of the CHAMP satellite was used to extract densities from the GITM run ($\rho_{4.6}$) at a one minute cadence. Using GITM densities at the satellite-position as inputs for RCMR (see Figure 5), a GITM simulation was run again during the same time, but used RCMR to change the molecular coefficient. This was different from Goel *et al.* [2020] which used the global maximum, minimum and mean densities. The thermal conductivity coefficient $A(O_2, N_2)$ was initialized to $1.0 \times 10^{-4} \text{ Jm}^{-1}\text{s}^{-1}\text{K}^{-1}$, while the $A(O)$ and exponent S were held constant at their previously set values above. The densities modeled by GITM with RCMR is denoted as ρ_{RCMR} . RCMR used the $\rho_{4.6}$ data and ρ_{RCMR} data to compute an error (z) to update the thermal conductivity estimation while the simulation progressed. Figure 5 shows that the dynamic adjustments of $A(O_2, N_2)$ in RCMR work, in that the error z decreased to zero, while $A(O_2, N_2)$ converged to $4.6 \text{ Jm}^{-1}\text{s}^{-1}\text{K}^{-1}$ after around three days.

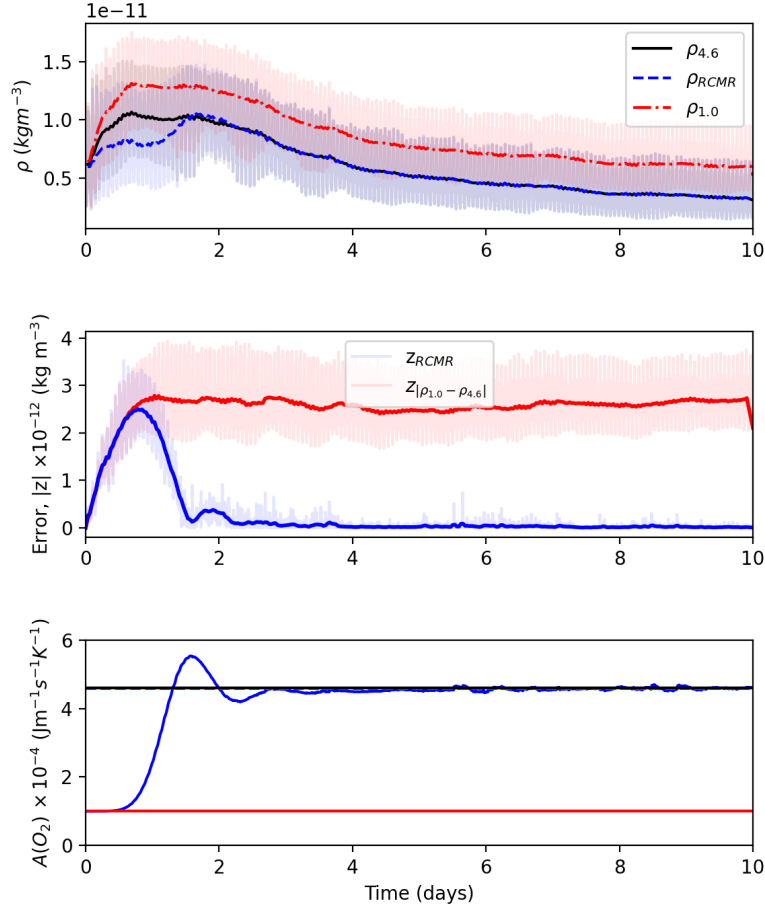


Figure 5. Top: Densities along the CHAMP orbit are shown with three different values of A_{O_2} . Raw values are shown as transparent lines, while orbit averaged values are shown as bold. The error (middle) and thermal conductivity coefficient (bottom) from using simulation data at CHAMP locations at a one minute cadence is shown in blue for the RCMR assisted run, red for a constant parameterization of $1.0 \times 10^{-4} \text{ Jm}^{-1}\text{s}^{-1}\text{K}^{-1}$, and black for a constant parameterization of $4.6 \times 10^{-4} \text{ Jm}^{-1}\text{s}^{-1}\text{K}^{-1}$. The orbit averaged errors are shown with a thicker line of their corresponding color.

In addition to the truth data and RCMR-adjusted mass densities, the density and error is shown when the incorrect parameterization was used and not corrected. This provides a quantification of the level of improvement that can be gained using RCMR.

306 This example shows that RCMR can correct for an incorrectly set thermal coef-
307 ficient, but model bias can be caused by a variety of issues, as described above. For a
308 second example of idealized RCMR runs, illustrated in Figure 6, GITM was run with
309 consistent thermal conductivity parameters but incorrect drivers.

315 F10.7, the daily solar flux at wavelength 10.7 cm, is a proxy for solar spectra
316 [Richards *et al.*, 1994]. An alternative to the F10.7 proxy is using FISM to describe
317 the spectrum [Chamberlin *et al.*, 2008], [Chamberlin *et al.*, 2020]. Near real time and for
318 predictions, F10.7 is approximate and one of the only ways to describe the solar spectrum.
319 If F10.7 is not right or does not describe the spectrum correctly, model bias could result.
320 This second test explores whether RCMR can compensate for an incorrect specification of
321 the F10.7. The RCMR estimated parameter for this run and future runs was the exponent
322 s , with an initial value of s as 0.1.

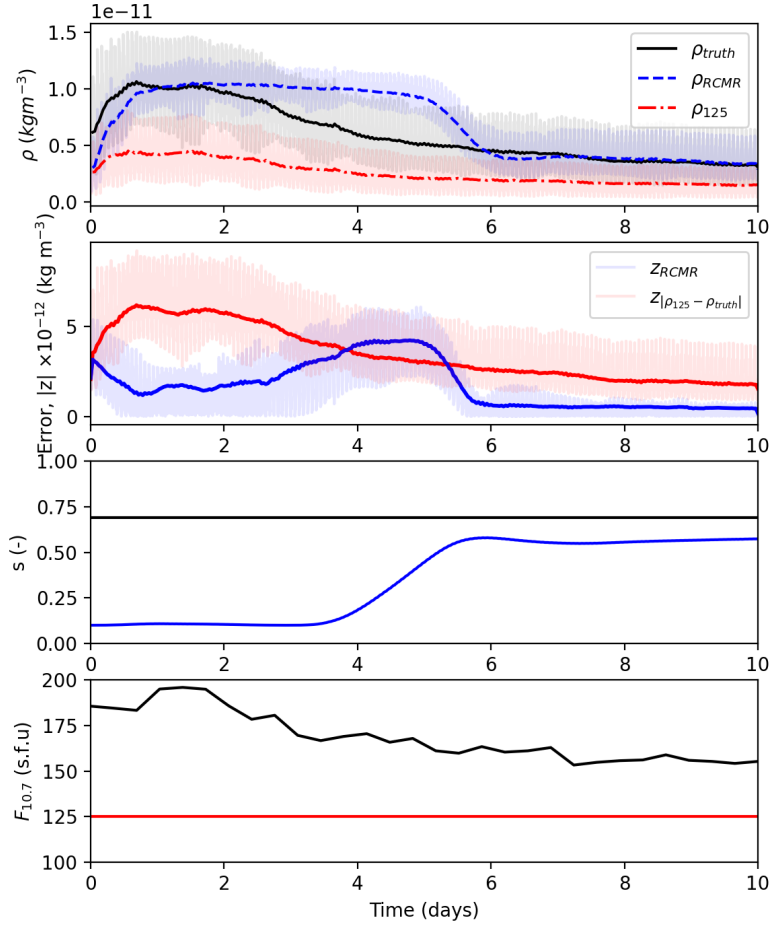


Figure 6. Densities and errors are shown with three different run conditions: (1) the truth data used as input for RCMR in black, (2) the RCMR run dynamically debiasing GITM with incorrect solar drivers in blue, and (3) the case where GITM has incorrect solar drivers and is not implementing RCMR in red. The orbit averaged errors are shown with a thicker line of their corresponding color. The third subplot shows the thermal conductivity exponent over time. The bottom subplot shows the corresponding F10.7 used in each run.

Similarly to the previous run, the truth data being used was an extraction of GITM results where the F10.7 was updated based on the actual F10.7, which varied from 190 to 150 solar flux units. The RCMR run was intentionally run with an incorrect constant F10.7 of 125 solar flux units. Over time, the RCMR-debiased run converged to the truth data and the error decreased dramatically. The time it took to converge was longer than

Satellite	Sept. 2002 Altitude (km)	Sept. 2004 Altitude (km)	Inclination (°)
CHAMP	390-450	370-410	87.3
GRACE	485-515	460-505	89.0

Table 3. Information on the altitude and orbit inclination during the two test periods.

the first test by roughly two days. This was due to the densities being similar between the two runs for the first two days despite the very different run settings. In this case, a low F10.7 incorrect driver caused a low density, having a negative bias. At the same time, a low initial value of s caused a high density since the thermal conduction would be reduced leading to a high temperature. In this case, a positive bias would result. In combination, the biases mostly cancelled and RCMR was relatively ineffective for the first two days. After this, RCMR was able to track the error and produced an 's' that adequately compensated for the incorrect specification of F10.7.

3.2 RCMR with CHAMP and GRACE Satellite Densities

In the previous section, the simulated densities generated from a GITM run represented the "true" thermosphere. In this section, tests of RCMR with real satellite data are described. Initial tests were done using data from September of the years 2002 and 2004 as sample months for high and moderate F10.7 fluxes, respectively, since these were used for manual debiasing earlier in the study. Both time periods had relatively low levels of activity, with $|D_{st}|$ being less than 50 nT during each time period.

The estimation of the thermal conductivity exponent s was explored using CHAMP and GRACE individually. Figures 7 and 8 show the September 16-26, 2002 period comparing the results of GITM with a constant thermal conductivity to the RCMR adjusted values against the satellite observations.

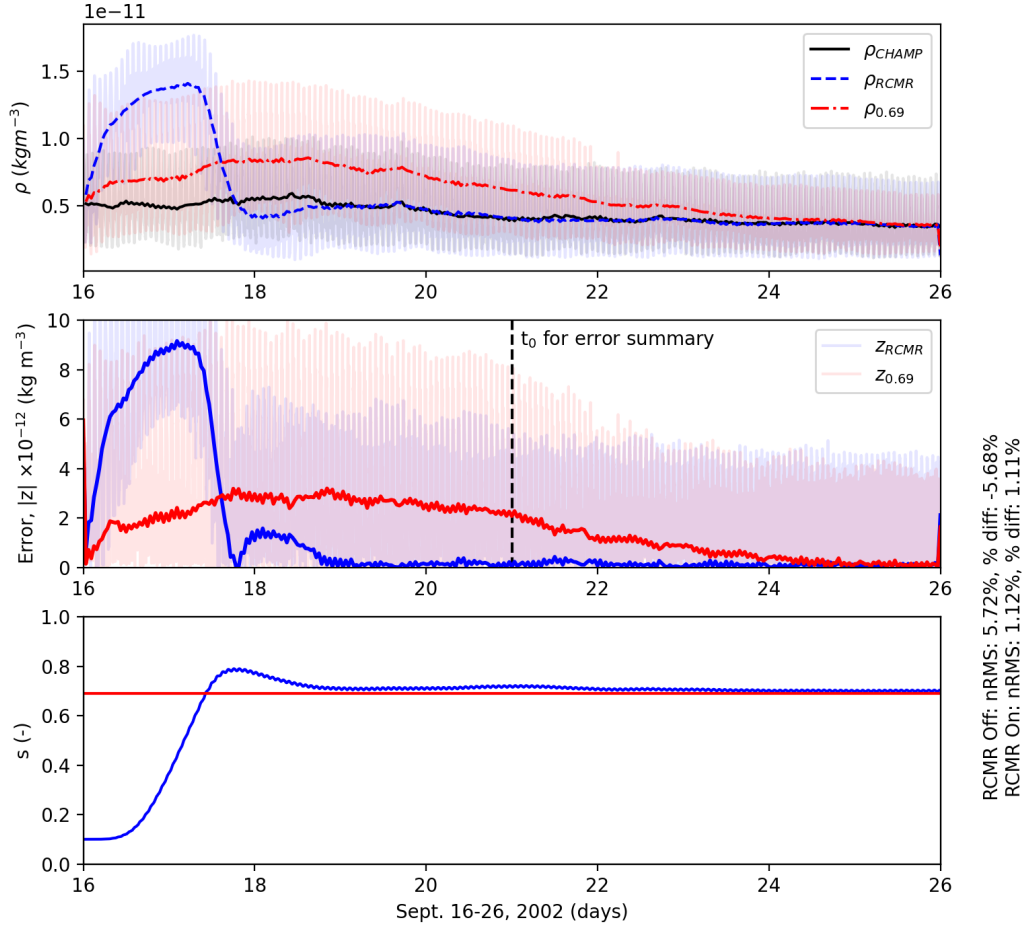


Figure 7. The top subplot shows the raw and orbit averaged densities are shown for GITM, CHAMP and RCMR. In the middle subplot, the errors are plotted over one another to observe how RCMR compares to a constant thermal conductivity typically used in GITM. The bottom subplot shows the consequent thermal conductivity exponent estimated in blue. In red is the constant value used when RCMR was not applied. The local time of ascending node for CHAMP was 13.4 LT.

The RCMR and non-RCMR runs both converge to the CHAMP and GRACE measurements. With RCMR, the convergence is much faster with large improvements in mass density after around two to three days. As observed in Figures 7 and 8, the free parameter s converged to 0.70 which is similar to the constant value of 0.69 used in a typical GITM

run. This set of thermal conductivity coefficients (4.6e-4, 4.6e-4, 0.69) matched the results found in the manual debiasing process.

Normalized root mean square (nRMS) and percent error are shown on the bottom right of Figures 7 and 8 to quantify the improvement with RCMR. These values were computed based on orbit-averaged densities for the final five days of the run (marked as t_0 on the figure). This gave sufficient time for RCMR to debias the model and allow GITM to reach a roughly diurnally reproducible state. In Figure 8, the nRMS and percent difference show improvement of $\pm 33\%$ percent error and nRMS to less than 3%.

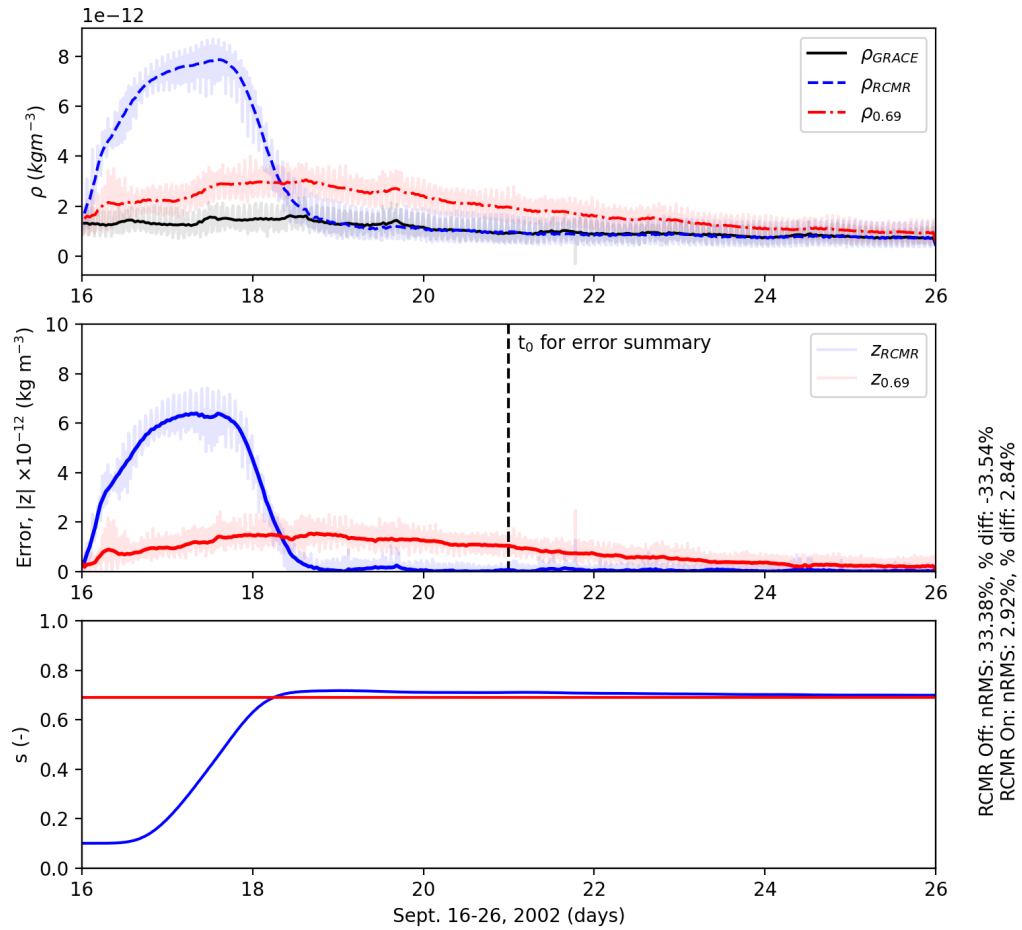


Figure 8. Same as Figure 7, except using GRACE instead of CHAMP. The local time of ascending node for GRACE was 21.7 LT.

Switching to the time period in 2004, a similar simulation was performed using CHAMP data to check the robustness of RCMR under different solar conditions. The F10.7 was considerably lower for this run mostly being between 90-110 $\text{Wm}^{-2}\text{Hz}^{-1}$, while the seasonality and geomagnetic activity was similar. Recall that debiasing between September 2002 and 2004 was possible with similar thermal conductivity coefficients, and so running this time period gave RCMR the opportunity to demonstrate this. As shown in Figure 9, the RCMR and non-RCMR mass densities converged to CHAMP measurements with RCMR reducing the time to converge by nearly seven days. In the bottom subplot, the estimated thermal conductivity exponent converges to right around 0.70 which is consistent with the RCMR test performed in 2002 and the manual debiased simulations. nRMS and percent error were used to quantify the improvement with RCMR. They showed a much larger improvement from a roughly -20% percent error and nRMS to less than 5%.

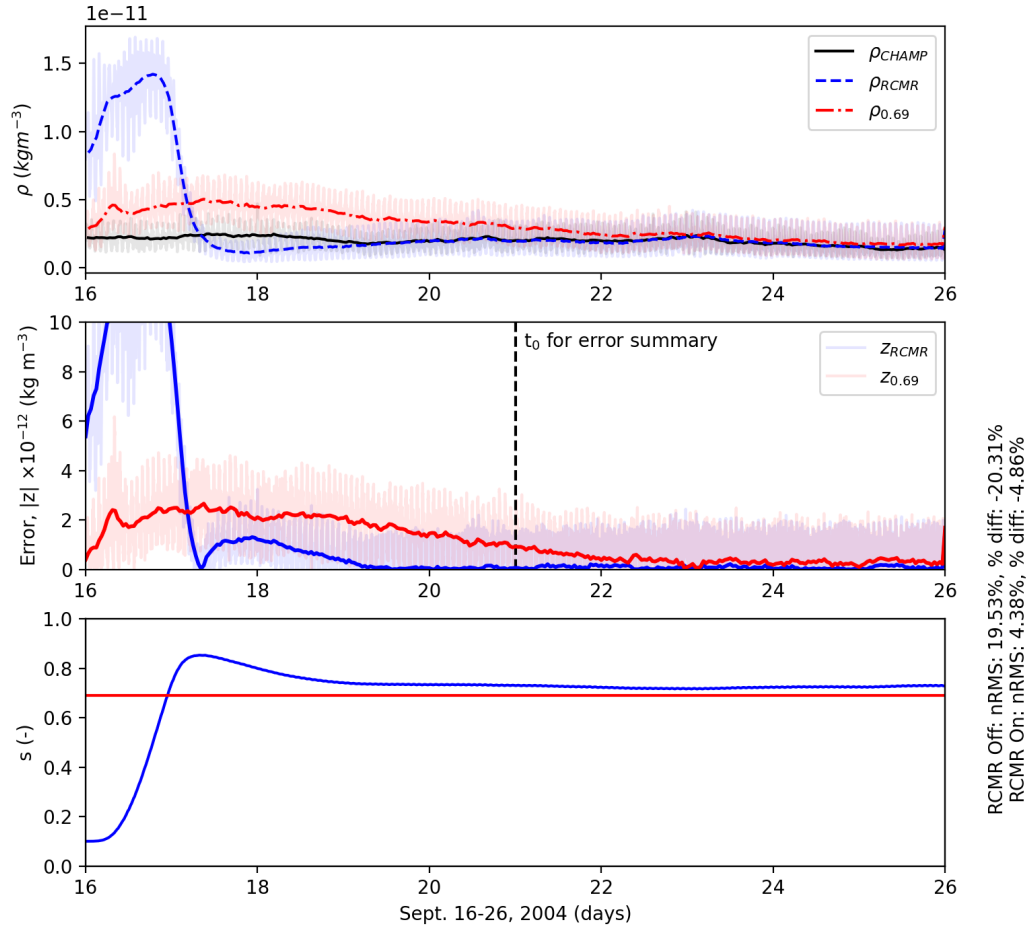


Figure 9. Same as Figure 7, except for September 2004. The local time of ascending node for CHAMP was 19.4 LT.

3.3 Storm-time Debiasing and Forecasting

In this section, GITM was debiased by RCMR before the storm in August 2005. The F10.7 for this time period was lower than the previous runs shown. It varied between 70-100 $\text{W m}^{-2} \text{Hz}^{-1}$. Comparisons between the typical GITM run, a purposefully biased GITM run, an RCMR-assisted GITM run with purposefully biased F10.7, and CHAMP data were made in an effort to improve forecasting of density enhancements during and after the storm.

389 The storm took place between August 24-26, 2005. In the RCMR run, the debiasing
390 took place from August 14-21. The run continued through the storm from August 21-28
391 without the assistance of RCMR. During the storm, the exponent 's' was held constant
392 at its last value specified by RCMR on August 21. In Figure 10, the debiasing was done
393 prior to the storm using CHAMP measurements. As was done before, the densities, errors
394 and dynamic thermal conductivity exponent are shown in comparison to the static runs.

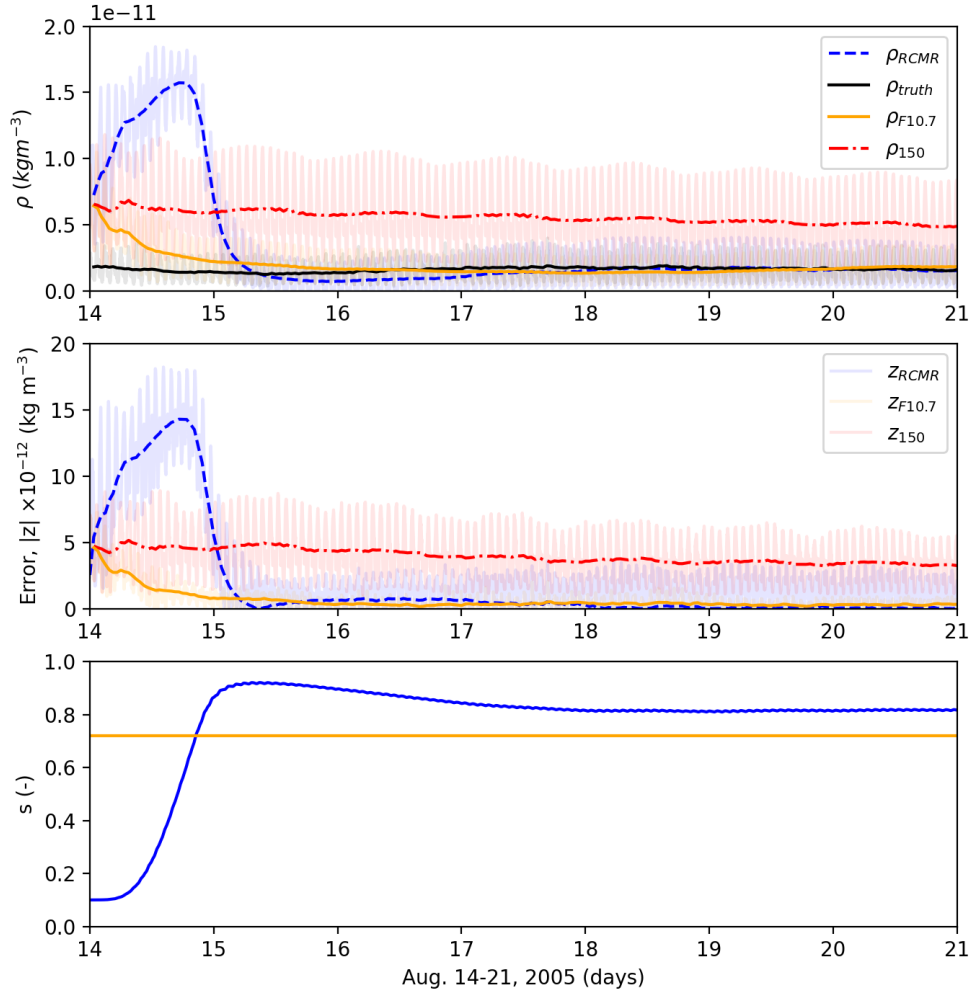


Figure 10. The densities and errors compared to CHAMP during August 2005 with RCMR on (blue) and RCMR off in two conditions. One run is with the daily averaged F10.7 values included (orange) and the other is with a constant, incorrect F10.7 of 150 (red). Both of the non-RCMR runs have the same constant thermal conductivity exponent, but only one of them is shown. The RCMR run is done with the incorrect F10.7. The bottom subplot shows the consequent thermal conductivity coefficient estimated.

As expected, the biased run with a constant F10.7 of $150 \text{ W m}^{-2} \text{ Hz}^{-1}$ was very different than the CHAMP measurements and a GITM run using real F10.7 measurements. It is important to point out that the parameter estimation from RCMR showed that the best exponent s was around 0.8 which was considerably larger than the other runs. The F10.7

of $150 \text{ Wm}^{-2}\text{Hz}^{-1}$ is higher than the true conditions artificially increasing mass densities. To counteract this, an increased thermal conductivity was needed to dissipate this excess energy, reducing the mass density.

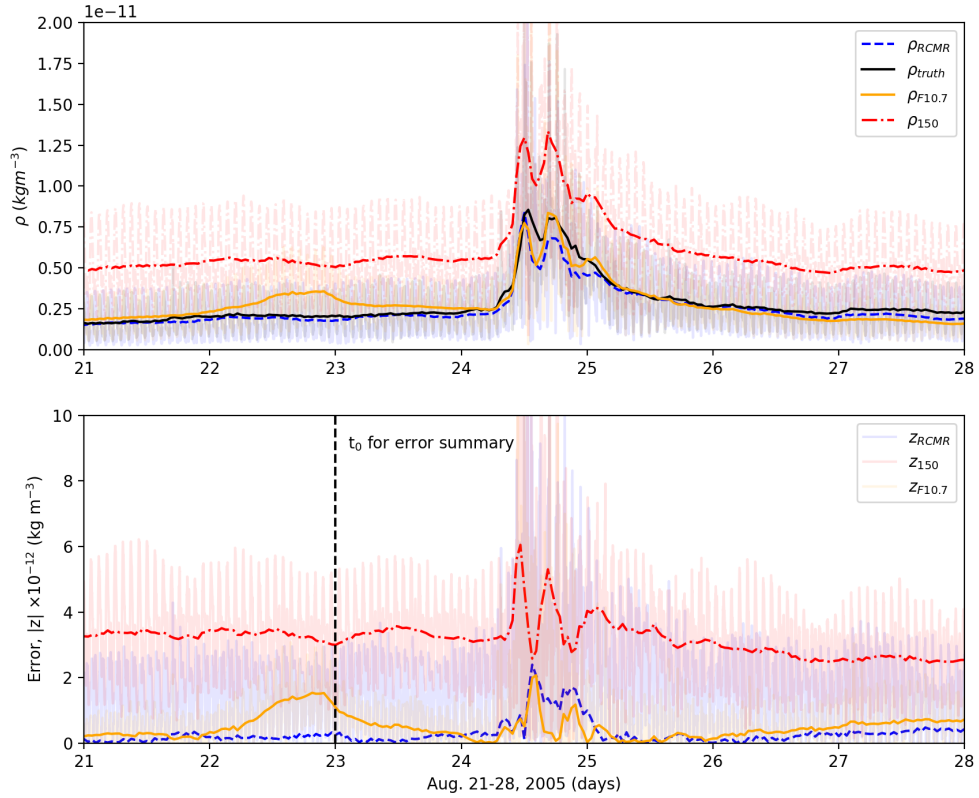


Figure 11. Similar to the previous figure, but for the August 21st-28th, 2005. RCMR is turned off so no thermal conductivities are being shown.

Figure 11 shows the runs proceeding through the storm and storm recovery. For the three days after RCMR was turned off, the densities stayed debiased. The storm was better represented because of this, although GITM with RCMR under predicted the storm response during the peaks. This is most likely due to the increased thermal conductivity, which pulled energy out of the thermosphere too quickly during the storms. This is relatively minor compared to the biased model results though. The RCMR run matched the recovery density after the storm quite well. Additional performance assessment metrics are shown in Table 4. The formulations for each metric is shown in *Kalafatoglu Eyiguler et al.*

[2019]. When comparing the RCMR run to the biased run, the RCMR run performed better in every metric. Each of these statistics help quantify the improvements that can be had to the mean and variability of the mass densities.

On the other hand, the calibrated model of GITM also performed better than the biased run. Comparing the RCMR run and the calibrated model of GITM, the Ratio_{avg} of the default GITM simulation performed better than the RCMR run. RCMR was capable of improving the time delay (TD) of the storm peak, the mean average error (MAE) and normalized root mean square error (NRMSE).

3.4 Debiasing using an Empirical Model

Satellite measurements of the thermosphere are not always available, especially during real-time operations. For this reason, an empirical model such as MSIS may be useful as a source of "truth data". Whereas empirical models are not always skilled at correctly predicting highly perturbed events, like solar storms, they are useful for obtaining information on the background state. Further, satellite orbits may not be ideally placed to represent the global conditions, while an empirical model can be sampled anywhere (or everywhere). While satellite data is the ideal choice for debiasing, using an empirical model may help in some situations. For these reasons, a final test was run to attempt to debias GITM under conditions where satellite data was (in theory) not available.

In this run, MSIS mass densities at the subsolar point at 400 km altitude were used as the source of "truth data". The same time period in August 2005 was used for this. RCMR was allowed to debias GITM for seven days and then proceed through the storm. During the storm, RCMR was turned off and the storm-time performance evaluation of GITM was checked against CHAMP data, as in the previous case.

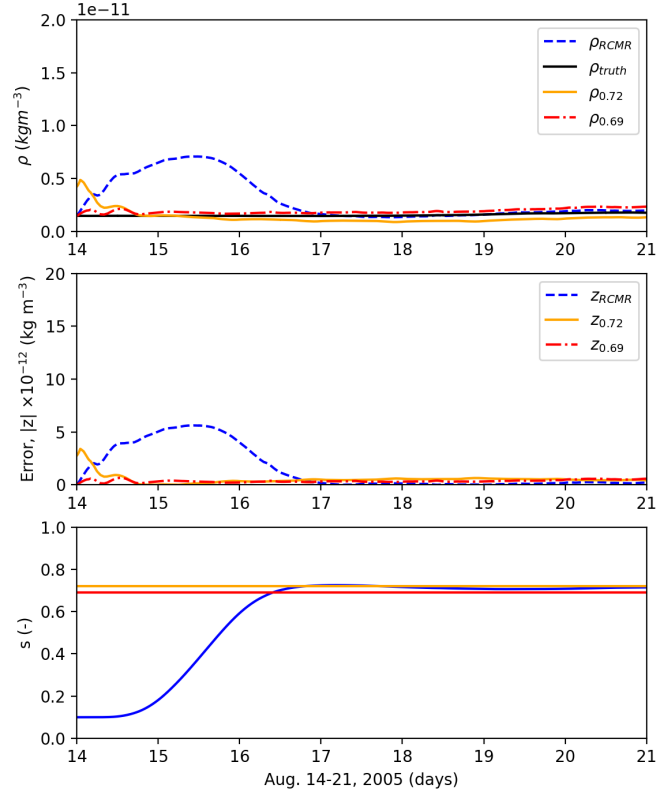


Figure 12. The densities and errors compared to MSIS at the 400 km altitude sub-solar point during August 2005 with RCMR on (blue) and RCMR off in two conditions. One run is with manually calibrated thermal conductivity values included (orange) and the other is with a constant, biased thermal conductivity exponent of 0.69 (red). The bottom subplot shows the consequent thermal conductivity coefficient estimated.

In Figure 12 shows the mass density for different runs at the subsolar point at 400 km altitude, which is where the MSIS data was extracted. The biased run (labeled $\rho_{0.69}$) and RCMR run no longer had error induced by the F10.7. The only source of error in the RCMR run (ρ_{RCMR}) was the initial value of 0.1 given to the thermal conductivity exponent s . The thermal conductivity exponent s in the wrong tuning run was 0.69, whereas the best tuning had an exponent of 0.72 ($\rho_{0.72}$). At the 400 km, subsolar point each run converged to MSIS results within a few days of the run. As shown in the bottom subplot, RCMR estimated the 's' to be 0.71, using the MSIS results.

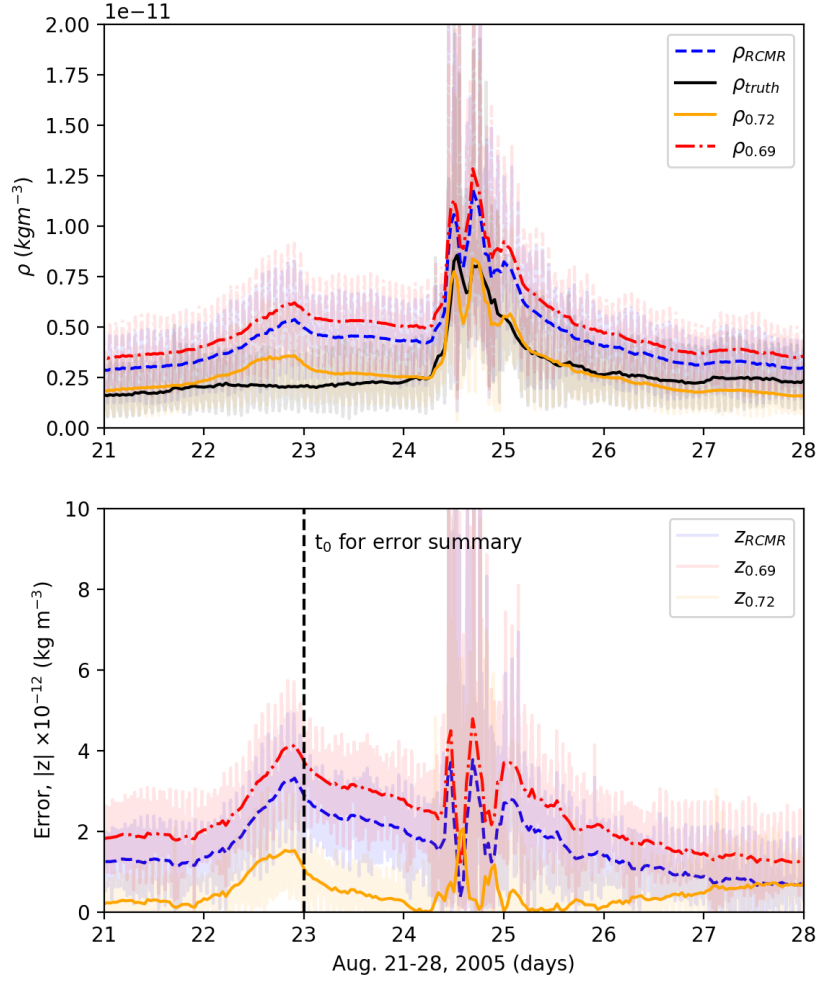


Figure 13. Similar to Figure 11, but for the MSIS debiased mass densities at CHAMP locations.

Figure 13 shows the same runs proceeding through the storm and storm recovery, but now at the CHAMP positions. These densities are quite different than the subsolar density, since CHAMP is a high inclination satellite sampling the high latitudes, where the energy balance can be quite different. In this case, the biased run performed worst of the three runs. In Table 4, the same performance tools from *Kalafatoglu Eyiguler et al.* [2019] are shown. The RCMR run performed similarly or better than the biased run, but considerably worse than the calibrated GITM run. This is due to the difference between MSIS and CHAMP during the proceeding time period. Since RCMR was debiasing to-

Performance Assessment Tool	$\rho_{F10.7}$	ρ_{150}	ρ_{RCMR}	$\rho_{0.72}$	$\rho_{0.69}$	ρ_{RCMR}
Ratio _{max} (-)	0.98	1.56	0.98	0.98	1.5	1.38
Ratio _{avg} (-)	0.96	2.00	0.9	0.96	1.75	1.52
TD (hours)	3.8	3.8	-0.8	3.8	3.8	3.8
MAE (kg/m ³)	4.44e-13	3.13e-12	3.47e-13	4.44e-13	2.35e-12	1.64e-12
NRMSE (%)	8.32	48.68	8.29	8.32	38.15	27.41
PE (-)	0.65	-1.06	0.65	0.65	-0.62	-0.16

Table 4. Statistical analysis on orbit-averaged data from t_0 for each run in Figure 11. The first two are dimensionless quantities. TD is the time difference between storm peak as seen from data and from the model computed in hours. The mean average error (MAE) has units of kg/m³. The normalized root mean square error (NRMSE) is shown as a percentage. The prediction efficiency (PE) is also a non-dimensional statistic. The columns are separated by run-type the first three columns being associated with debiasing with CHAMP data and the final three columns are associated with debiasing with MSIS.

wards MSIS, the debiasing improvement is subject to the accuracy of MSIS. It is possible that debiasing with MSIS at locations other than at 400 km altitude at the subsolar point could improve this, but it was not explored in this work. This simulation does show that debiasing with an empirical model improves the performance of the biased model, but then is subject to other limitations.

4 Summary and Conclusion

In this work, GITM used RCMR with CHAMP and GRACE satellite measurements to correct for uncertain parameters and incorrect drivers. During these runs, it was shown that after sufficient error accumulation, RCMR was able to reduce the bulk of the error and nRMS to below 5% within 2-3 days. This work also showed the effectiveness of debiasing GITM prior to a storm in August 2005 with CHAMP measurements and MSIS. When debiasing was applied before a storm, the results during the storm were shown to improve in all metrics except the time delay between a measured storm peak and the model-predicted peak (where they performed identically with and without RCMR). It was

demonstrated that RCMR could use empirical models within GITM to debias the model, but this was reliant on MSIS results having low error during the pre-storm time period and the choice of where to sample the empirical model. Future work will show more runs and have a statistical approach to address how beneficial using MSIS for parameter estimation can be.

Acknowledgments

The research presented in this study was supported at University of Michigan partially by the U.S. Air Force Office of Scientific Research under Dynamic Data-Driven Applications Systems grant FA9550-16-1-0071. This work was also supported by the joint NSF-NASA Space Weather with Quantified Uncertainties program under NSF grant number 2028125 and NASA grant number 80NSSC20K1581. GITM is freely available through GitHub (<https://github.com/aaronjridley/GITM>). Dst obtained from the World Data Center in Kyoto, Japan (<https://wdc.kugi.kyoto-u.ac.jp/dst/dir/>). CHAMP and GRACE satellite data is available through Technical University, Delft (<http://thermosphere.tudelft.nl/>).

References

- Banks, P. M., and G. Kockarts (1973), *Aeronomy*, 372 pp., Academic Press, doi: 10.1016/C2013-0-10329-7.
- Barlier, F., C. Berger, J. Falin, G. Kockarts, and G. Thuillier (1969), *Aeronomica acta, Inst. Aéronomie Spatiale, Bruxelles*.
- Bell, J. M., S. W. Bougher, J. H. Waite Jr., A. J. Ridley, B. A. Magee, K. E. Mandt, J. Westlake, A. D. DeJong, A. Bar-Nun, R. Jacovi, G. Toth, and V. De La Haye (2010), Simulating the one-dimensional structure of titan's upper atmosphere: 1. formulation of the titan global ionosphere-thermosphere model and benchmark simulations, *Journal of Geophysical Research: Planets*, 115(E12), doi:10.1029/2010JE003636.
- Bougher, S. W., D. Pawlowski, J. M. Bell, S. Nelli, T. McDunn, J. R. Murphy, M. Chizek, and A. Ridley (2015), Mars global ionosphere-thermosphere model: Solar cycle, seasonal, and diurnal variations of the mars upper atmosphere, *Journal of Geophysical Research: Planets*, 120(2), 311–342, doi:10.1002/2014JE004715.
- Bowman, B., W. Tobiska, and F. Marcos (2006), A new empirical thermospheric density model jb2006 using new solar indices, in *AIAA/AAS Astrodynamics Specialist Conference and Exhibit*, p. 6166.
- Bowman, B., W. K. Tobiska, F. Marcos, C. Huang, C. Lin, and W. Burke (2008), *A New Empirical Thermospheric Density Model JB2008 Using New Solar and Geomagnetic Indices*, doi:10.2514/6.2008-6438.
- Bowman, B. R. (2004), The semiannual thermospheric density variation from 1970 to 2002 between 200-1100 km, *Advances in the Astronautical Sciences*, 119, 04–174.
- Brandt, D. A., C. D. Bussy-Virat, and A. J. Ridley (2020), A simple method for correcting empirical model densities during geomagnetic storms using satellite orbit data, *Space Weather*, 18(12), e2020SW002565, doi:https://doi.org/10.1029/2020SW002565, e2020SW002565 10.1029/2020SW002565.
- Bruinsma, S., D. Tamagnan, and R. Biancale (2004), Atmospheric densities derived from CHAMP/STAR accelerometer observations, *Planetary and Space Science*, 52, 297–312, doi:10.1016/j.pss.2003.11.004.
- Burrell, A., A. Goel, A. J. Ridley, and D. S. Bernstein (2015), Correction of the photo-electron heating efficiency within the global ionosphere-thermosphere model using retrospective cost model refinement, *Journal of Atmospheric and Solar-Terrestrial Physics*, 124, doi:10.1016/j.jastp.2015.01.004.

- 528 Bussy-Virat, C. D., A. J. Ridley, and J. W. Getchius (2018), Effects of uncertainties in
 529 the atmospheric density on the probability of collision between space objects, *Space*
 530 *Weather*, 16(5), 519–537, doi:<https://doi.org/10.1029/2017SW001705>.
- 531 Chamberlin, P. C., T. N. Woods, and F. G. Eparvier (2008), Flare irradiance spectral
 532 model (fism): Flare component algorithms and results, *Space Weather*, 6(5), doi:
 533 10.1029/2007SW000372.
- 534 Chamberlin, P. C., F. G. Eparvier, V. Knoer, H. Leise, A. Pankratz, M. Snow, B. Tem-
 535 pleman, E. M. B. Thiemann, D. L. Woodraska, and T. N. Woods (2020), The flare
 536 irradiance spectral model-version 2 (fism2), *Space Weather*, 18(12), e2020SW002588,
 537 doi:<https://doi.org/10.1029/2020SW002588>, e2020SW002588 10.1029/2020SW002588.
- 538 Doornbos, E., H. Klinkrad, and P. Visser (2008), Use of two-line element data for ther-
 539 mosphere neutral density model calibration, *Advances in Space Research*, 41(7), 1115–
 540 1122, doi:<https://doi.org/10.1016/j.asr.2006.12.025>.
- 541 D’Amato, A. M., A. A. Ali, A. Ridley, and D. S. Bernstein (2013), Retrospective cost
 542 optimization for adaptive state estimation, input estimation, and model refinement, *Pro-*
 543 *cedia Computer Science*, 18, 1919–1928, doi:<https://doi.org/10.1016/j.procs.2013.05.361>,
 544 2013 International Conference on Computational Science.
- 545 Fuller-Rowell, T. J., and D. Rees (1980), A three-dimensional, time-dependent, global
 546 model of the thermosphere, *Journal of the Atmospheric Sciences*, 37.
- 547 Garcia, M. (2021), Space debris and human spacecraft.
- 548 Goel, A., A. J. Ridley, and D. S. Bernstein (2018), Estimation of the eddy diffusion co-
 549 efficient using total electron content data, *2018 Annual American Control Conference*
 550 *(ACC)*, doi:10.23919/ACC.2018.8431184.
- 551 Goel, A., B. M. Ponder, A. J. Ridley, and D. S. Bernstein (2020), Estimation of thermal-
 552 conductivity coefficients in the global ionosphere–thermosphere model, *Journal of*
 553 *Aerospace Information Systems*, 17(9), 546–553, doi:10.2514/1.I010819.
- 554 Hedin, A. E. (1983), A revised thermospheric model based on mass spectrometer and
 555 incoherent scatter data: Msis-83, *Journal of Geophysical Research: Space Physics*, 88.
- 556 Hedin, A. E. (1987), Msis-86 thermospheric model, *Journal of Geophysical Research:*
 557 *Space Physics*, 92(A5), 4649–4662, doi:<https://doi.org/10.1029/JA092iA05p04649>.
- 558 Hedin, A. E. (1991), Extension of the msis thermosphere model into the middle and lower
 559 atmosphere, *Journal of Geophysical Research: Space Physics*, 96(A2), 1159–1172,
 560 doi:<https://doi.org/10.1029/90JA02125>.

- Hejduk, M. D., and R. K. Frigm (2015), Collision avoidance short course - part i: Theory.
- Hilsenrath, J. e. a. (1960), Tables of thermodynamic and transport properties, *Pergamon Press*.
- Jacchia, L. G. (1970), New Static Models of the Thermosphere and Exosphere with Empirical Temperature Profiles, *SAO Special Report*, 313.
- Kalafatoglu Eyiguler, E. C., J. S. Shim, M. M. Kuznetsova, Z. Kaymaz, B. R. Bowman, M. V. Codrescu, S. C. Solomon, T. J. Fuller-Rowell, A. J. Ridley, P. M. Mehta, and E. K. Sutton (2019), Quantifying the storm time thermospheric neutral density variations using model and observations, *Space Weather*, 17(2), 269–284, doi: <https://doi.org/10.1029/2018SW002033>.
- Kuang, D., S. Desai, A. Sibthorpe, and X. Pi (2014), Measuring atmospheric density using gps-leo tracking data, *Advances in Space Research*, (53), 243–256.
- Lide, E.-i. C., D. R. (1997), Crc handbook of chemistry and physics, *Boca Raton, FL: CRC Press*.
- Malhotra, G., A. J. Ridley, D. R. Marsh, C. Wu, and L. J. Paxton (2017), Understanding the Effects of Lower Boundary Conditions and Eddy Diffusion on the Ionosphere-Thermosphere System, in *AGU Fall Meeting Abstracts*, vol. 2017, pp. SA33A–2593.
- Marcos, F. A. (1990), Accuracy of atmospheric drag models at low satellite altitudes, *Advances in Space Research*, 10(3-4), 417–422.
- Masutti, D., G. March, A. J. Ridley, and J. Thoemel (2016), Effect of the solar activity variation on the global ionosphere thermosphere model (gitm), *Annales Geophysicae*, 34(9), 725–736, doi:10.5194/angeo-34-725-2016.
- Moorthy, A. K., J. J. Blandino, M. A. Demetriou, and N. A. Gatsonis (2021), Extended lifetime of cubesats in the lower thermosphere with active attitude control, *Journal of Spacecraft and Rockets*, 58(6), 1876–1892, doi:10.2514/1.A34975.
- Morozov, A., A. Ali, A. D’Amato, A. Ridley, S. Kukreja, and D. Bernstein (2011), Retrospective-cost-based model refinement for system emulation and subsystem identification, *Proceedings of the IEEE Conference on Decision and Control*, pp. 2142–2147, doi:10.1109/CDC.2011.6161284.
- Pachura, D., and M. D. Hejduk (2016), Conjunction assessment late-notice high-interest event investigation: Space weather aspects, *NASA Technical Reports Server*.
- Pavlov, A. V. (2017), Thermal conductivity of the multicomponent neutral atmosphere, *Journal of Geophysical Research: Space Physics*, 122(12), 12,476–12,485, doi:

- 10.1002/2017JA024397.
- Pawlowski, D. J., and A. J. Ridley (2009), The effect of the characteristics of solar flares on the thermospheric response, *AGU Fall Meeting Abstracts*, SA51A-1213.
- Picone, J. M., A. E. Hedin, D. P. Drob, and A. C. Aikin (2002), Nrlmsise-00 empirical model of the atmosphere: Statistical comparisons and scientific issues, *Journal of Geophysical Research: Space Physics*, 107(A12), SIA 15–1–SIA 15–16, doi: 10.1029/2002JA009430.
- Qian, L., S. C. Solomon, and T. J. Kane (2009), Seasonal variation of thermospheric density and composition, *Journal of Geophysical Research: Space Physics*, 114(A1), doi:https://doi.org/10.1029/2008JA013643.
- Reid, R., J. Prausnitz, and T. K. Sherwood (1977), The properties of gases and liquids, *New York: McGraw-Hill Book Co.*
- Richards, P. G., J. A. Fennelly, and D. G. Torr (1994), Euvac: A solar euv flux model for aeronomic calculations, *Journal of Geophysical Research: Space Physics*, 99(A5), 8981–8992, doi:https://doi.org/10.1029/94JA00518.
- Richmond, A. D., E. C. Ridley, and R. Roble (1992), A thermosphere/ionosphere general circulation model with coupled electrodynamics, *Geophys. Res. Lett.*, 19.
- Ridley, A. J., Y. Deng, and G. Tóth (2006), The global ionosphere-thermosphere model, *Journal of Atmospheric and Solar-Terrestrial Physics*, 68, 839–864.
- Saleh, J. H., D. E. Hastings, and D. J. Newman (2004), Weaving time into system architecture: satellite cost per operational day and optimal design lifetime, *Acta Astronautica*, 54(6), 413 – 431, doi:https://doi.org/10.1016/S0094-5765(03)00161-9.
- Santillo, M. A., and D. S. Bernstein (2010), Adaptive control based on retrospective cost optimization, *Journal of Guidance, Control, and Dynamics*, 33(2), 289–304, doi: 10.2514/1.46741.
- Schunk, R. W., and A. F. Nagy (2004), *Ionospheres*, 570 pp., Cambridge University Press.
- Storz, M. F., B. R. Bowman, M. J. I. Branson, S. J. Casali, and W. K. Tobiska (2005), High accuracy satellite drag model (hasdm), *Advances in Space Research*, 36(12), 2497 – 2505, doi:https://doi.org/10.1016/j.asr.2004.02.020, space Weather.
- Vargaftik, N. B., L. P. Filippov, A. A. Tarzimanov, and E. E. Totskii (1993), *Handbook of Thermal Conductivity of Liquids and Gases*, 368 pp., CRC Press.
- Wang, X., J. Miao, X. Lu, E. Aa, B. Luo, J. Liu, Y. Hong, Y. Wang, T. Ren, R. Zeng, C. Du, and S. Liu (2022), Using temporal relationship of thermospheric density

627 with geomagnetic activity indices and joule heating as calibration for nrlmsise-
628 00 during geomagnetic storms, *Space Weather*, 20(4), e2021SW003017, doi:
629 <https://doi.org/10.1029/2021SW003017>, e2021SW003017 2021SW003017.