

Asymmetric Responses of the Western tropical Pacific
Sea level to El Niño and La Niña

Qiuping Ren^{1,2}, Yuanlong Li^{1,3,4}, Fei Zheng^{3,5}, Fan

Wang^{1,2,3,4}, Jing Duan^{1,3,4}

¹Key Laboratory of Ocean Circulation and Waves, Institute of Oceanology, Chinese Academy of Sciences, Qingdao, China, ²University of Chinese Academy of Sciences, Beijing, China, ³Center for Ocean Mega-Science, Chinese Academy of Sciences, Qingdao, China, ⁴Function Laboratory for Ocean Dynamics and Climate, Qingdao National Laboratory for Marine Science and Technology, Qingdao, China, ⁵International Center for Climate and Environment Science, Institute of Atmospheric Physics, Chinese Academy of Sciences, Beijing, China,

Contents of this file

Figure S1

Figure S2

Figure S3

Figure S4

Table S1

Figure S5

Figure S6

Figure S7

Introduction

Seven figures and one table are uploaded as supporting information. **Figure S1** shows composites of sea level anomalies (SLAs) from AVISO for the mature phases of El Niño and La Niña conditions. **Figure S2** shows the lead-lag months of SLAs and Niño-3.4 index and Ratio of the synchronous-regressed coefficients $k_{\text{Niño}}$ and $k_{\text{Niña}}$. **Figure 3** shows the time series of the normalized SLAs at three tidal gauge station from different datasets. **Figure S4** shows the distributions of the 1st SVD mode for the sea surface temperature and wind stress of different condition during 1979-2016. **Table S1** shows the model experiments descriptions of HYCOM and 1.5-layer RGO. **Figure S5** shows the time-longitude plots of normalized ULT anomaly from RGO-CTL, EXP1, and SVD2. **Figure S6** shows R_k produced by SVD2, SVDD5, and SVD10. **Figure S7** shows R_k produced by EXP3.

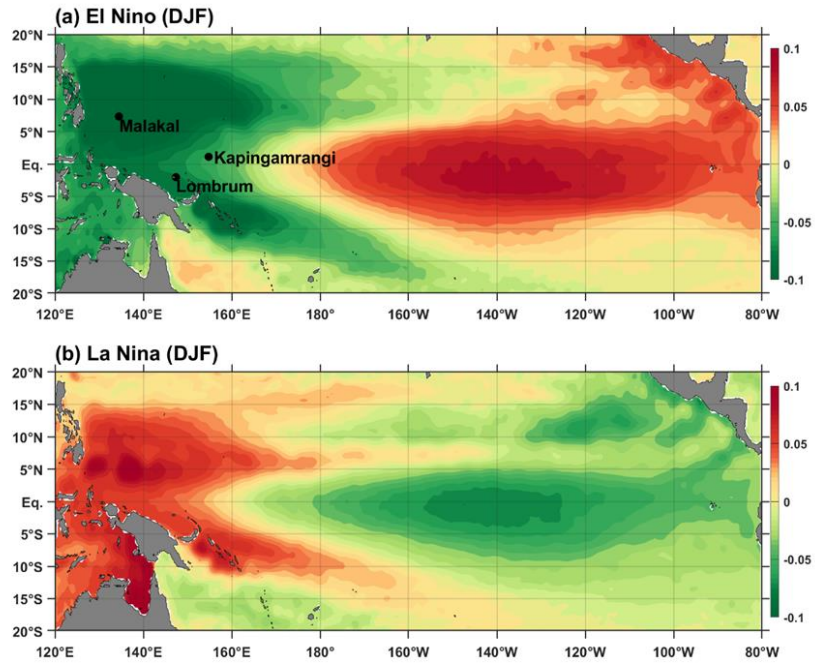


Figure S1. Composites of sea level anomalies (SLAs, m) from AVISO for the mature phases (December, January, and February, DJF) of (a) El Niño and (b) La Niña conditions during 1993-2016. The black dots at (7.33°N, 134.47°E), (1.1°N, 154.78°E) and (2.04°S, 147.47°E) indicate the Malakal, Kapingamrangi, and Lombrum tidal gauge stations.

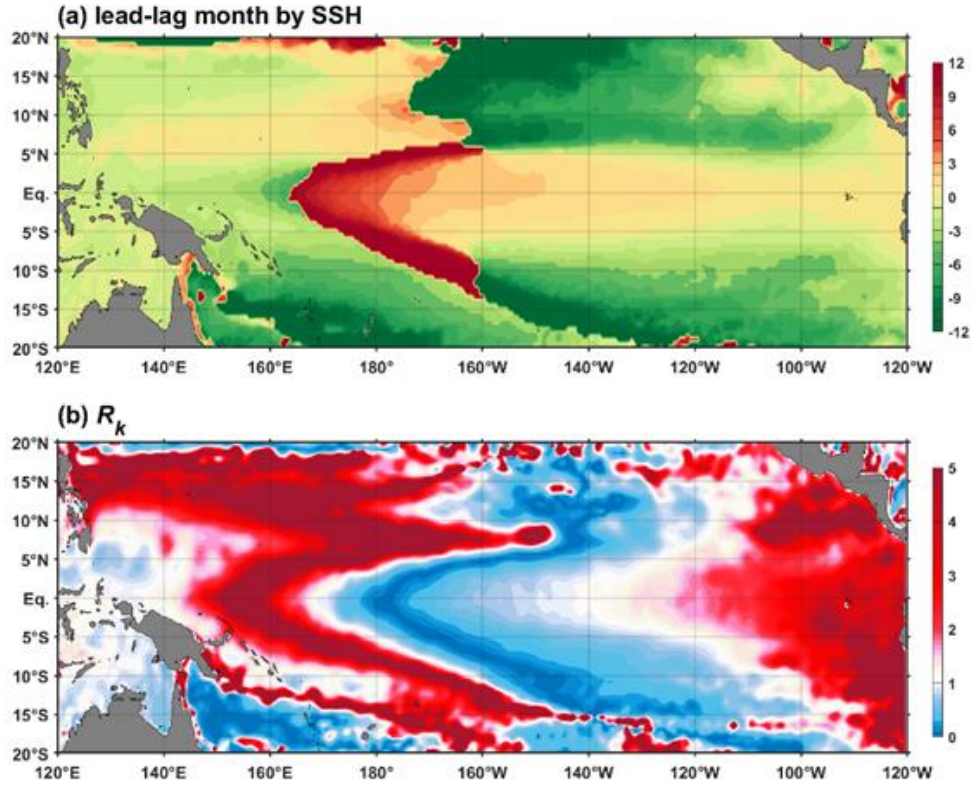


Figure S2. (a) The lead-lag months of SLAs and Niño-3.4 index. (b) Ratio of k_{Nino} to k_{Nina} , i.e., $R_k = k_{\text{Nino}}/k_{\text{Nina}}$. k_{Nino} and k_{Nina} are the synchronous regression coefficients of SLAs during El Niño (Niño-3.4 > 0) and La Niña (Niño-3.4 < 0) condition onto the normalized Niño-3.4 index, respectively. SLA data are derived from AVISO sea level product of 1993-2016.

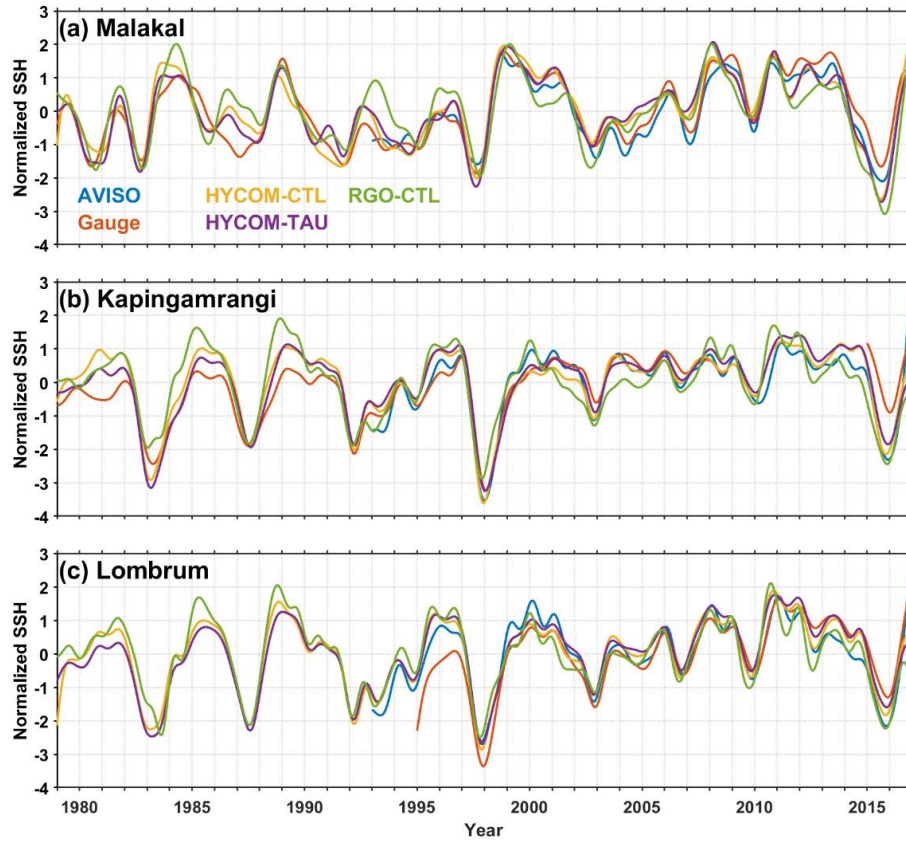


Figure S3. Time series of the normalized SLAs at (a) Malakal, (b) Kapingamrangi, (c) Lombrum from AVISO, tidal gauge, HYCOM-CTL, HYCOM-TAU and RGO-CTL. All the time series are 13-month low-passed filtered and normalized by the standard deviation. The normalized upper-layer thickness (ULT) anomaly in RGO-CTL represents SSH anomalies to compare with other datasets.

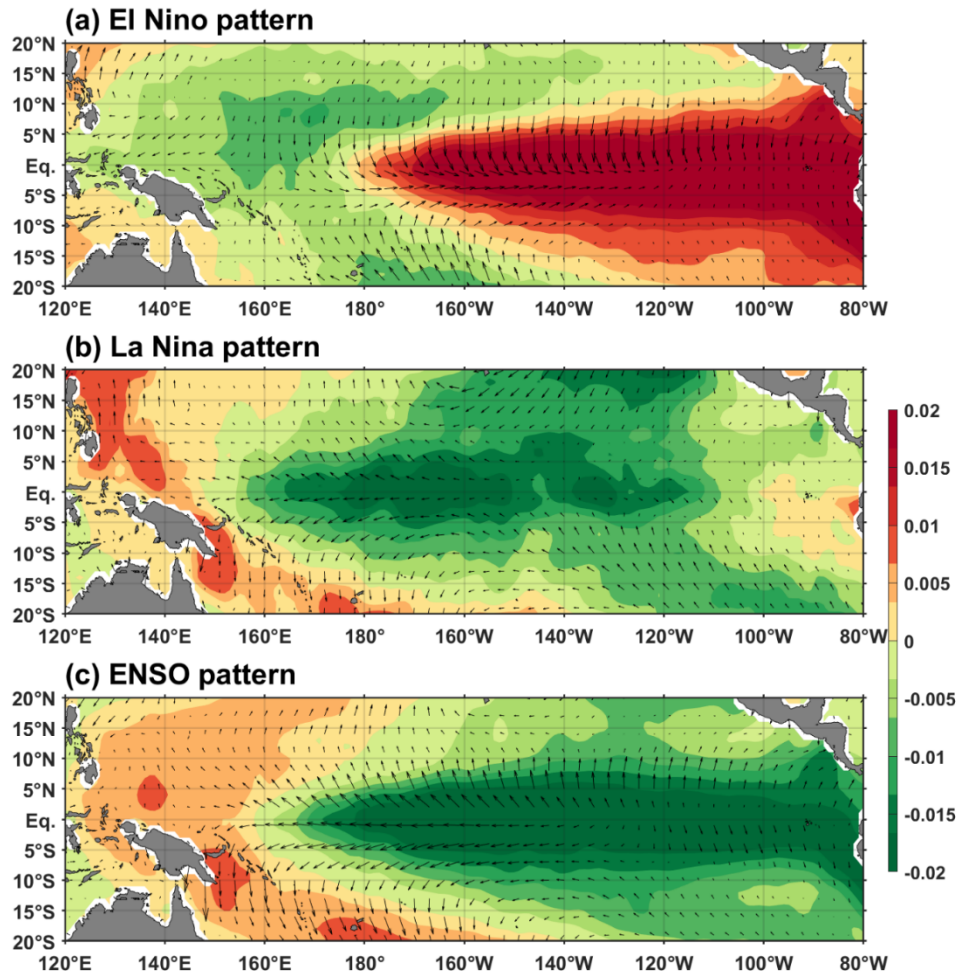


Figure S4. (a) Distributions of the 1st SVD mode for the sea surface temperature (SST; color shading) and wind stress (vector) of El Niño condition during 1979-2016. (b) and (c) are the same as (a), but for La Niña condition and ENSO condition, respectively. ENSO condition does not distinguish El Niño and La Niña conditions.

Table S1. HYbrid Coordinate Ocean Model (HYCOM) and 1.5-layer nonlinear reduced gravity ocean (RGO) Model experiments descriptions.

Exp. Name	Forcing
HYCOM-CTL	Daily ERA-Interim atmospheric fields
HYCOM-TAU	Daily ERA-Interim wind stress, but all the other forcing fields are fixed to monthly climatology
RGO-CTL	Monthly ERA-interim wind stress
EXP1	Reconstructed wind stress for El Niño and La Niña phase based on the 1 st SVD mode of SST and wind stress
EXP2	Reconstructed wind stress for all the period based on the 1 st SVD mode of SST and wind stress
EXP1-TAUX	Same as EXP1, but the meridional wind stress τ^y is fixed to monthly climatology
EXP2-TAUX	Same as EXP2, but the meridional wind stress τ^y is fixed to monthly climatology
EXP3	<p>Reconstructed wind stress ,</p> $\tau(x, y, t) = V_{\tau}(x, y)T(t)$ <p>x, y and t indicate the zonal, meridional and time grid points, respectively. V_{τ} is the 1st SVD singular vectors for wind stress. $T(t)$ is the idealized Niño-3.4 index and is a time-varying sinusoidal function with a timescale of 4 years, $\sin(t/4)$. EXP3 makes use of the 1st mode only and is integrated for 50 years.</p>
SVD2	Same as EXP1, but reconstructed wind stress based on the first two SVD modes
SVD5	Same as EXP1, but reconstructed wind stress based on the first five SVD modes
SVD10	Same as EXP1, but reconstructed wind stress based on the first ten SVD modes

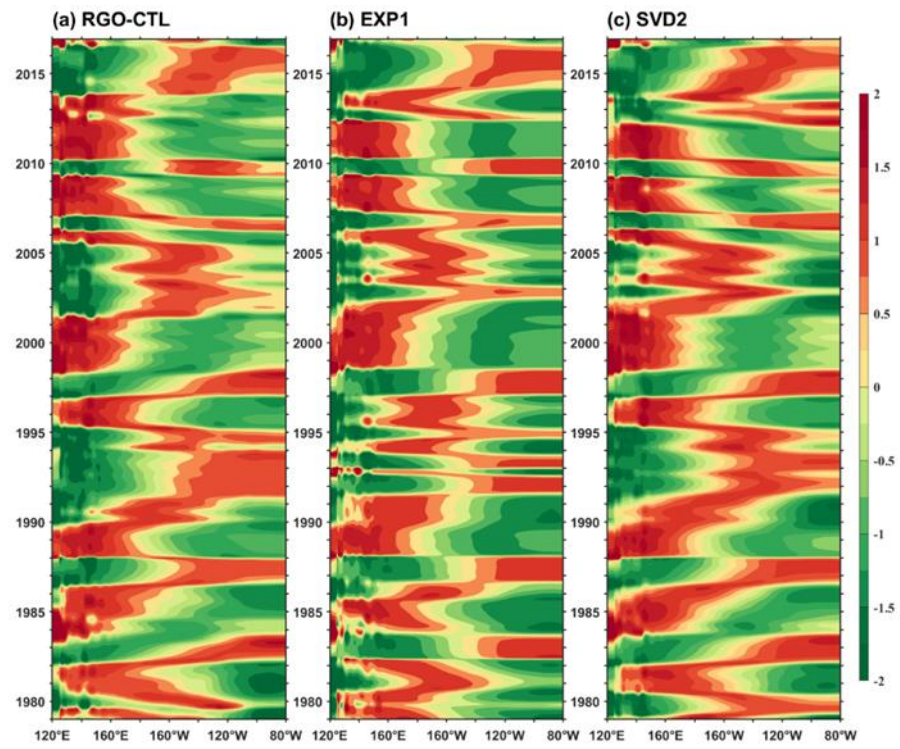


Figure S5. Time-longitude plots of normalized ULT anomaly from (a) RGO-CTL, (b) EXP1, and (c) SVD2.

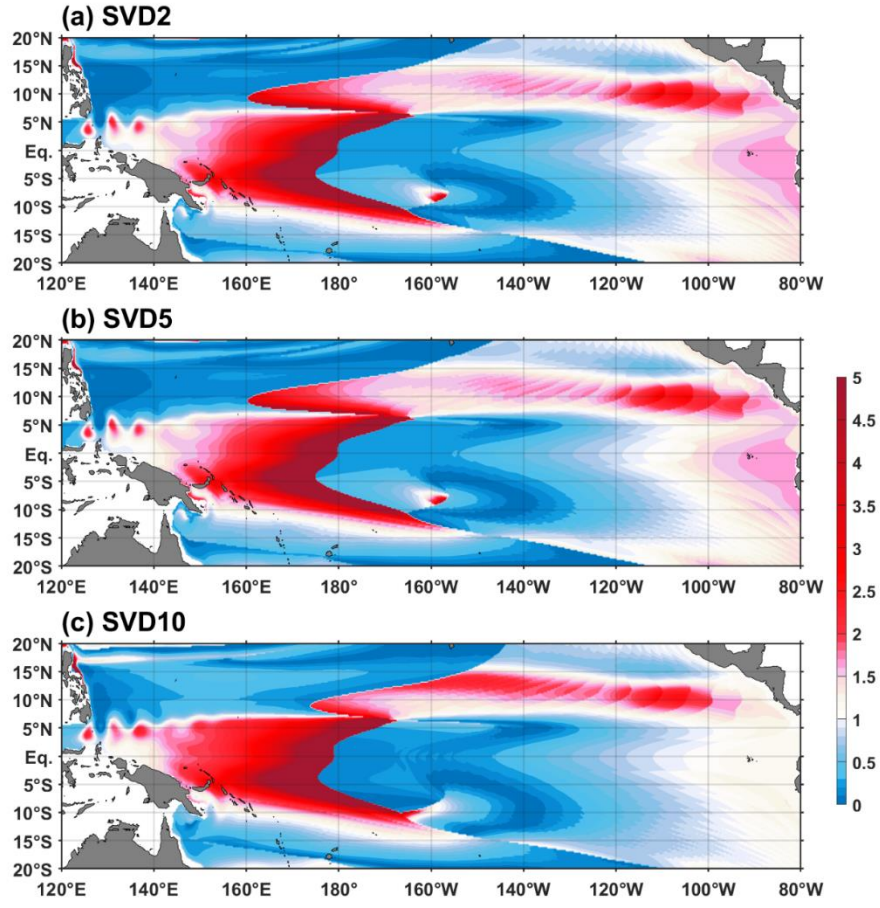


Figure S6. R_k produced by (a) SVD2, (b) SVD5, and (c) SVD10. k_{Nino} and k_{Nina} are the regression coefficients of ULT anomaly during El Niño (Niño-3.4 > 0) and La Niña (Niño-3.4 < 0) condition onto the normalized Niño-3.4 index, respectively.

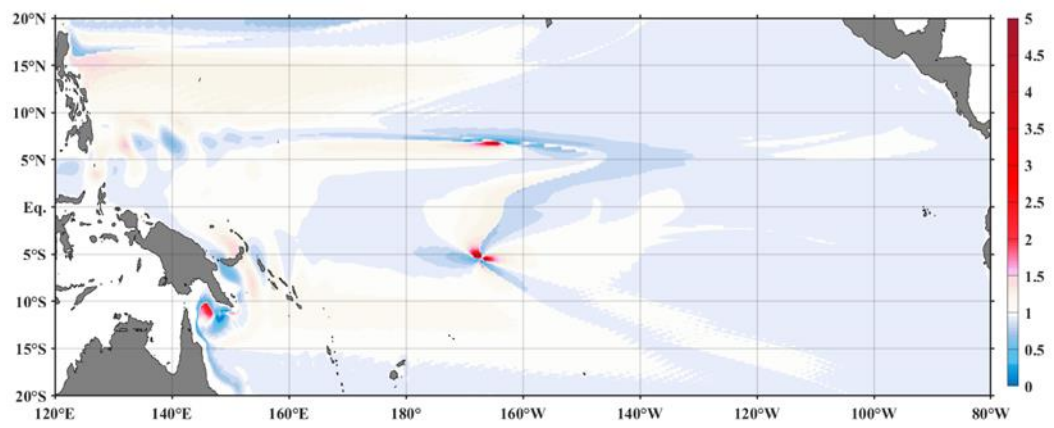


Figure S7. R_k produced by EXP3.