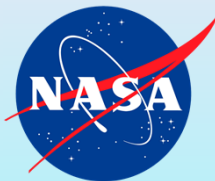


Observations of Southeast Asian Biomass Burning and Urban Trace Gas Enhancement Ratios: Insights into Regional Air Quality and Aerosol Composition



Joshua P. DiGangi¹ (joshua.p.digangi@nasa.gov)¹, Glenn S. Diskin¹, Subin Yoon², Sergio L. Alvarez², James H. Flynn², Claire E. Robinson^{1,3}, Michael A. Shook¹, K. Lee Thornhill^{1,3}, Edward L. Winstead^{1,3}, Luke D. Ziemba¹, Maria O. Cambaliza⁴, James B. Simpas⁴, Miguel Ricardo A. Hilario⁵, Armin Sorooshian⁵
¹ NASA Langley Research Center, Hampton, VA, USA ² University of Houston, Houston, TX, USA ³ Science Systems Applications Inc., Hampton, VA, USA
⁴ Manila Observatory, Quezon City, Philippines ⁵ University of Arizona, Tucson, AZ, USA

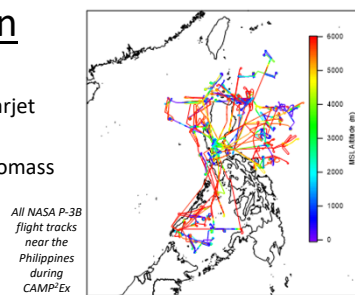


Overview

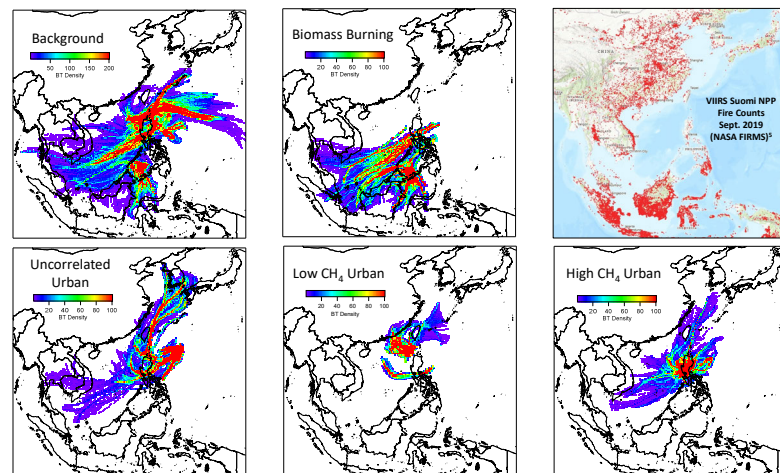
- Enhancement ratios of CH₄:CO used to apportion biomass burning and urban sources
- HYSPLIT backtrajectory analysis consistent with resulting regime assignment
- Organic aerosol dominate average biomass burning aerosol composition, while sulfates form the plurality of urban emissions
- Enhancement ratios of O₃:CO highly correlated in biomass burning and urban regimes respectively, though with different values

CAMP²Ex Flight Campaign

- Joint NASA/MO/NRL project: Aug-Oct 2019
- Measurements: NASA P-3B aircraft, SPEC Learjet
- Major science question: How do contrasting airmass composition and sources, such as biomass burning (BB) or urban, affect:
 - Aerosol properties
 - Air quality
 - Cloud nucleation & precipitation

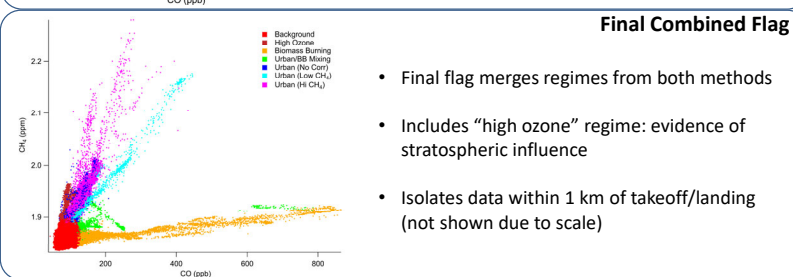
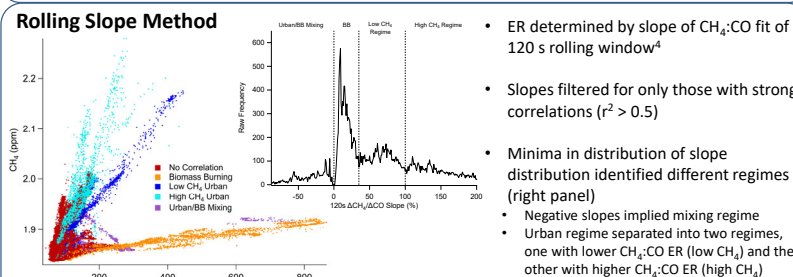
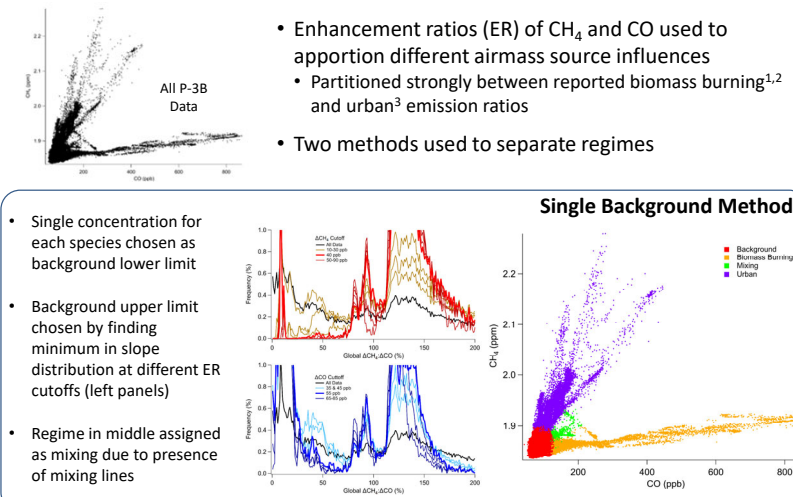


HYSPLIT Backtrajectories



- 48 h BT along flight track^{6,7}
 - 1 min intervals
 - GFS 0.25° meteorology
 - Only shown < 2 km
- Biomass burning flagged air influenced exclusively from SE Asia, primarily Borneo, Sumatra, and Sulawesi
- Low CH₄ flagged air influenced by mainland China, while high CH₄ flagged air influenced mostly by local Pilipino emissions
- Uncorrelated urban flagged air influenced predominantly by longer range transport from SE Asia, Korea, & Japan

Chemical Influence Apportionment



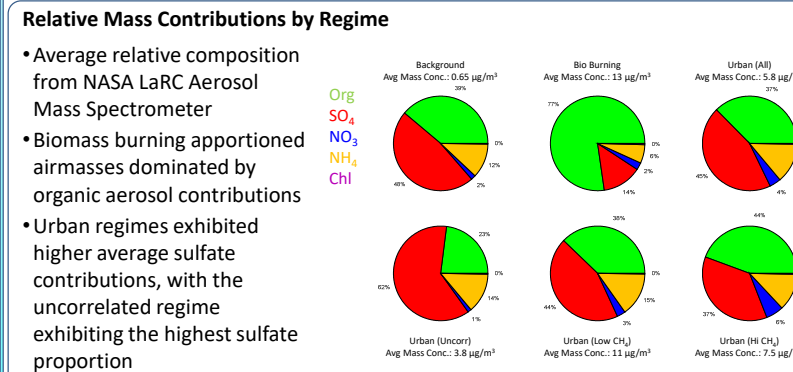
Acknowledgements

Manila Observatory
Ateneo de Manila University
US Naval Research Lab
NASA GSFC/WFF & ESPO
CAMP2EX Science Team
NOAA ARL/READY
James Geiger, Mario Rana

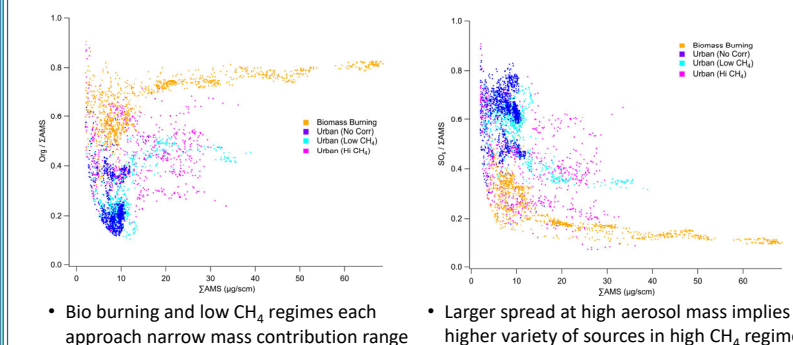
References

- Nara, H., Tanimoto, H., Tohima, Y., Mukai, H., Nogi, Y., & Machida, T. (2017). Emission factors of CO₂, CO and CH₄ from Sumatran peatland fires in 2013 based on shipboard measurements. *Tellus B: Chemical and Physical Meteorology*, 69(1), 1395047. <https://doi.org/10.1080/16005967.2017.1395047>
- Wardle, J., Bloom, A., Pandey, S., Jiang, Z., Weiden, R. M., Walker, T. W., Houwing, S., & Rockmann, T. (2017). Reduced biomass burning emissions reconcile conflicting estimates of the post-2000 atmospheric methane budget. *Nature Communications*, 8(1), 2227. <https://doi.org/10.1038/s41467-017-0246-0>
- Herber, C., Tremp, A. H., Hailu, C. H., Kothari, A., Grimmond, C. S. B., Barlow, J. F., & Remm, E. (2016). Spatial and temporal variability of urban fluxes of methane, carbon monoxide and carbon dioxide above London. *UK Atmospheric Chemistry and Physics*, 16(10), 10543-10557. <https://doi.org/10.5194/acp-16-10543-2016>
- Haridass, H. S., DiGangi, J. P., Choi, Y., Diskin, G. S., Puaide, S. E., Rana, M., Nowak, J. B., Knute, C., Ren, X., He, H., Dickerson, R. R., & Li, Z. (2019). Using Short-Term CO₂:CO Ratios to Assess Air Mass Differences Over the Korean Peninsula During KORUS-AD. *Journal of Geophysical Research: Atmospheres*, 124(20), 10951-10972. <https://doi.org/10.1029/2018JD029697>
- FIRMS. (2020). VIIRS (S-NPP) 1 Band 375 m Active Fire Product NRT (vector data). https://doi.org/10.5067/FIRMS/VIIRS/VNP14IMG_T_NRT002
- Stein, A. F., Draper, R. R., Rolph, G. D., Stunder, B. J. B., Cohen, M. D., and Hign, F. (2015). NOAA's HYSPLIT atmospheric transport and dispersion modeling system. *Bull. Amer. Meteor. Soc.*, 96, 2059-2077. <http://dx.doi.org/10.1175/BAMS-14-00110.1>
- Rolph, G., Stein, A., and Stunder, B. (2017). Real-time Environmental Applications and Display System: READY. *Environmental Modelling & Software*, 95, 210-228. <https://doi.org/10.1016/j.envsoft.2017.06.025>

Aerosol Chemical Composition



Contributions as Function of Total Mass



Trace Gas Enhancement Ratios

