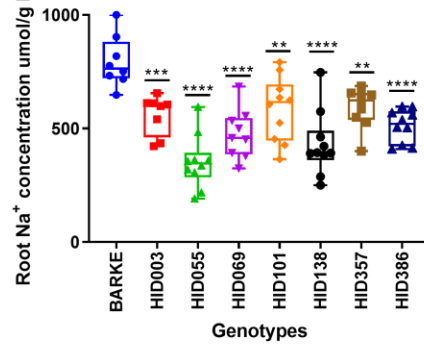
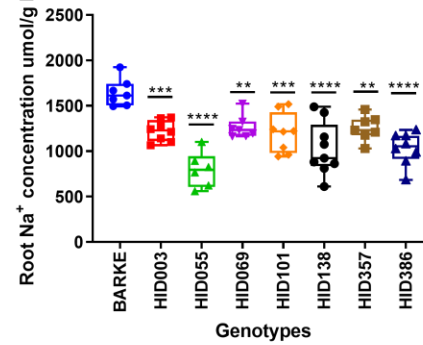


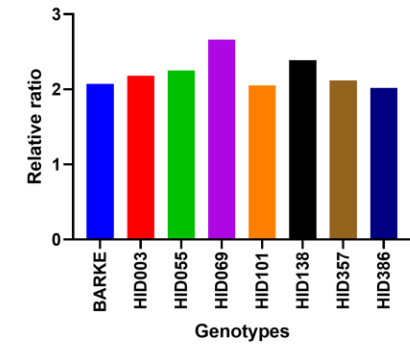
(a) Root Na<sup>+</sup> ion concentration of one week old seedlings under control conditions



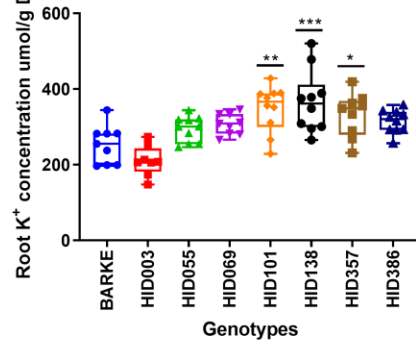
(b) Root Na<sup>+</sup> ion concentration of one week old seedlings under saline conditions



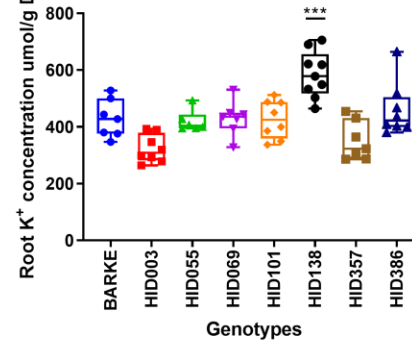
(c) Relative ratio of root Na<sup>+</sup> under saline conditions (S/C)



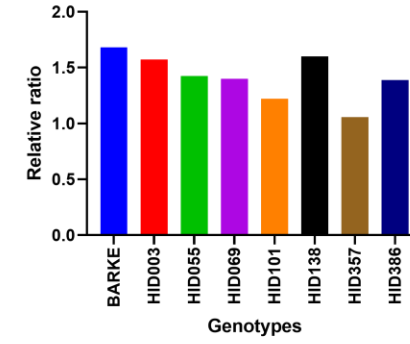
(d) Root K<sup>+</sup> ion concentration of one week old seedlings under control conditions



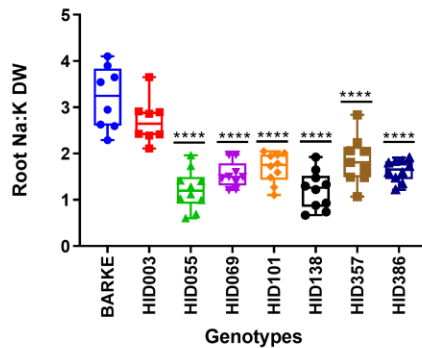
(e) Root K<sup>+</sup> ion concentration of one week old seedlings under saline conditions



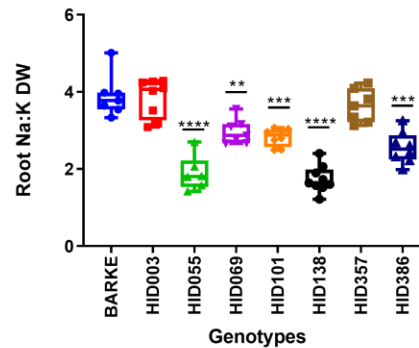
(f) Relative ratio of root K<sup>+</sup> under saline conditions (S/C)



(g) Root Na:K ratio of one week-old seedlings under control conditions



(h) Root Na:K ratio of one week-old seedlings under saline conditions



(i) Relative ratio of root Na:K under saline conditions (S/C)

