

Figure 1. Lesions of a two-day-old pig from a farm with ASF. Swelling and hemorrhage of inguinal lymph nodes (A), petechial hemorrhage in kidneys (B), congestion meninges (C), hydranencephaly (D)

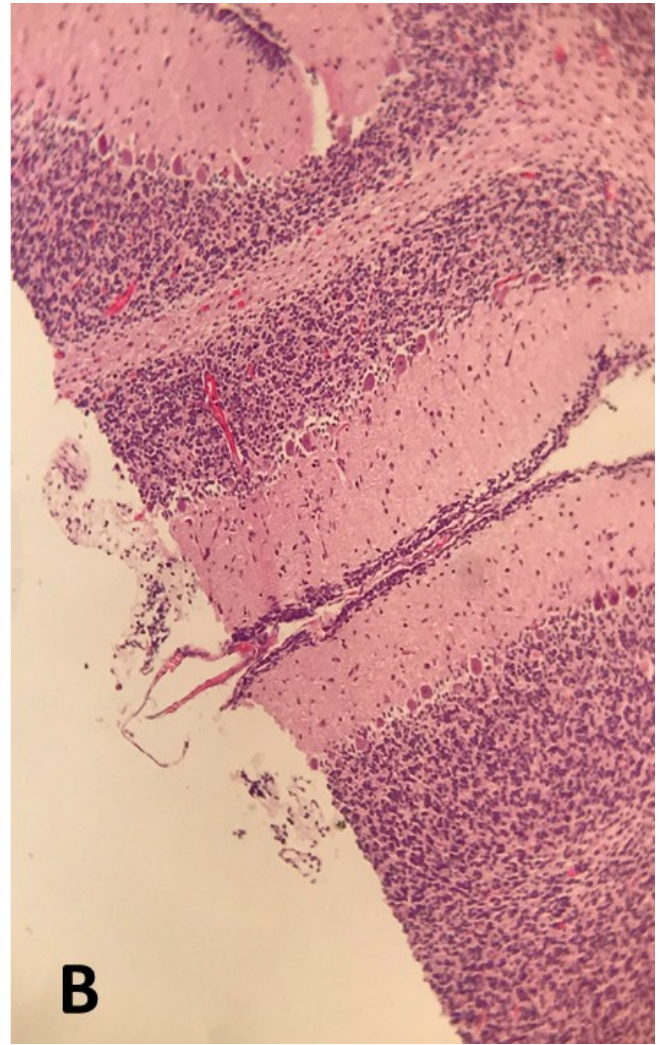
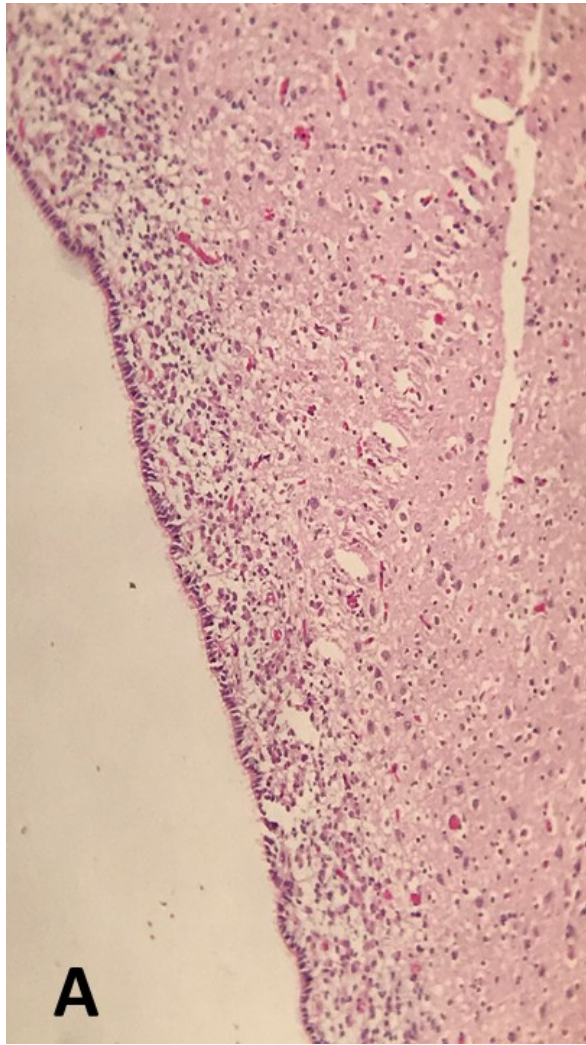


Figure 2. Microscopic lesions of brain tissues.



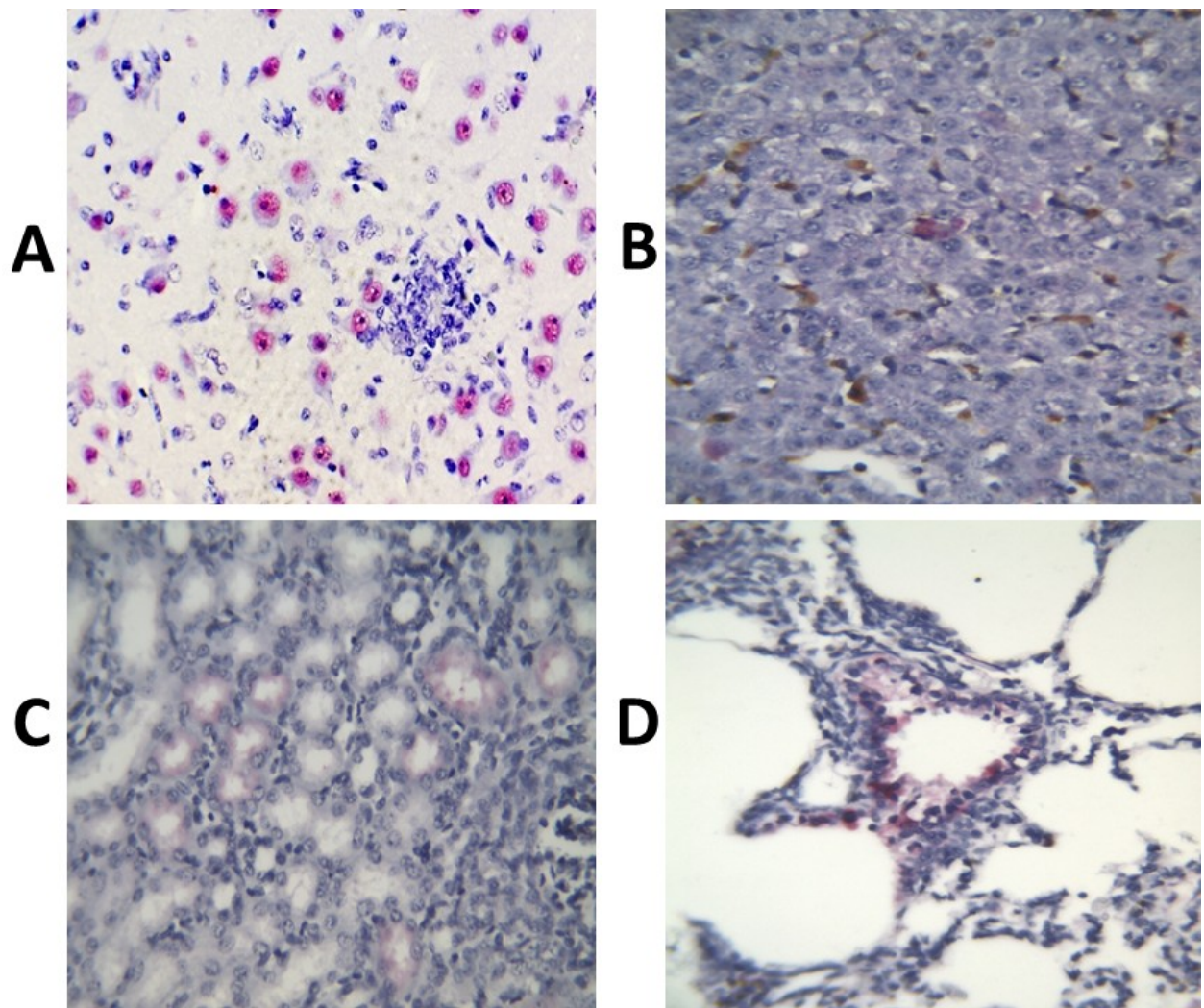


Figure 3. Immunohistochemistry staining of brain tissues in brain (A), liver (B), kidney (C), lung (D) tissues.